

4

3

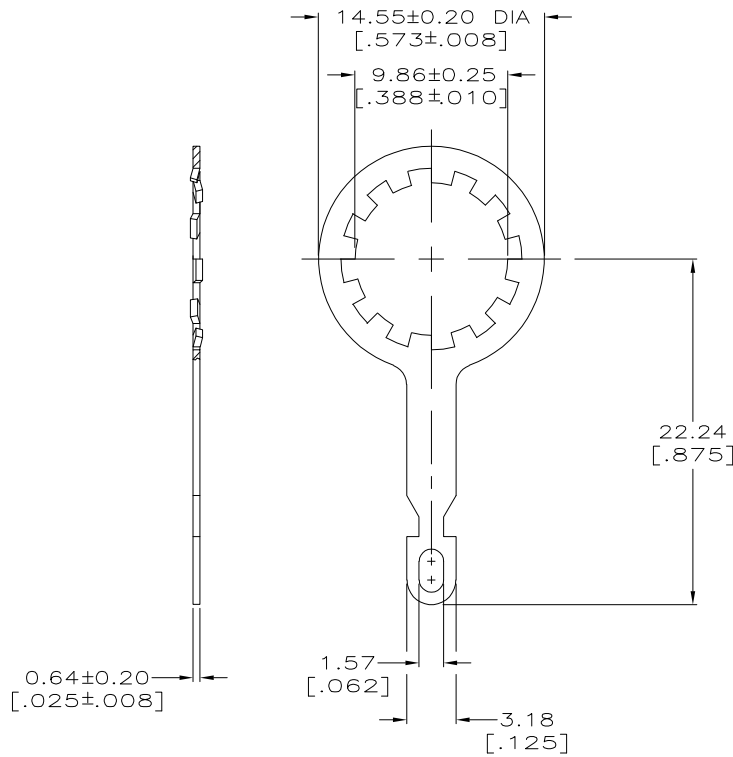
2

1

THIS DRAWING IS UNPUBLISHED. RELEASED FOR PUBLICATION  
 © COPYRIGHT - BY TYCO ELECTRONICS CORPORATION. ALL RIGHTS RESERVED.

LOC	DIST	REVISIONS			
P	LTR	DESCRIPTION	DATE	DWN	APVD
	F1	REVISED PER ECO-06-018704	06SEP2006	MC	JH

- ① BRASS PER ASTM-B-36
- ② TIN-LEAD PLATE PER MIL-P-81728  
3.81 μm [.000150] MINIMUM THICK.
- ③ SEE SEPERATE RESTRICTED CUSTOMER DRAWING WITH THIS PART NUMBER.
- ④ TIN PLATE PER ASTM-B-545  
3.81 μm [.000150] MINIMUM THICK.



FINISH	PART NUMBER
④	9-227260-0
③	227260-3
②	227260-2

THIS DRAWING IS A CONTROLLED DOCUMENT.		DWN J. LIPPERT 5-23-94	Tyco Electronics Corporation Harrisburg, PA 17105-3608	
DIMENSIONS: MM(INCHES)		CHK D. TAYLOR 5-23-94	APVD D. TAYLOR 05-29-94	
TOLERANCES UNLESS OTHERWISE SPECIFIED:		NAME LOCKWASHER, TERMINAL		
0 PLC ± -		PRODUCT SPEC		
1 PLC ± -		APPLICATION SPEC		
2 PLC ± -		SIZE CAGE CODE DRAWING NO		
3 PLC ± 0.41 [.016]		WEIGHT .021 OZ A3 00779 C-227260		
4 PLC ± -		RESTRICTED TO		
ANGLES ± -		CUSTOMER DRAWING		
MATERIAL ①	FINISH SEE TABLE	SCALE 4:1 SHEET 1 OF 1 REV F1		