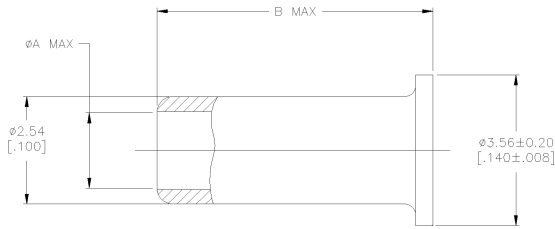


THIS DRAWING IS UNPUBLISHED. RELEASED FOR PUBLICATION
 BY TYCO ELECTRONICS CORPORATION. ALL RIGHTS RESERVED.

LOC	DIST	REVISIONS			
		REV	DATE	BY	APP'D
AJ	16	J	REV PER 0020-0164-01	26MAR01	MO BM

△ BRASS PER ASTM-B-16 OR
 BRASS PER ASTM-B-36
 △ NICKEL PLATE PER QQ-N-290,
 2.54µm [.000100] MIN THICKNESS



11.48	[.452]	0.91	[.036]	1-222001-8
10.03	[.395]	2.08	[.082]	1-222001-6
11.23	[.442]	1.88	[.074]	1-222001-4
18.97	[.747]	1.88	[.074]	1-222001-2
7.11	[.280]	1.88	[.074]	1-222001-0
10.03	[.395]	1.88	[.074]	222001-8
14.02	[.552]	1.88	[.074]	222001-6
7.42	[.292]	1.88	[.074]	222001-4
6.78	[.267]	1.88	[.074]	222001-2
B		A		PART NUMBER

THIS DRAWING IS A CONTROLLED DOCUMENT.		DRAWN D. LAMAN	27MAR01	AMP Tyco Electronics Corporation Harrisburg, Pa	
CHECKED BY M. PHILLIPS		DATE 4/26/00	NAME M. PHILLIPS	MATERIAL TUBING	
DIMENSIONS: MM (INCH)		TOLERANCES UNLESS OTHERWISE SPECIFIED:		FINISH -△	
Ø	PLC	B	-	APPLICATION SPEC	SIZE
Ø	PLC	B	-	APPLICATION SPEC	DATE CODE
Ø	PLC	B	0.13 [005]	APPLICATION SPEC	DRAWING NO
Ø	PLC	B	-	APPLICATION SPEC	RESTRICTED TO
Ø	PLC	B	-	APPLICATION SPEC	WEIGHT
Ø	PLC	B	-	APPLICATION SPEC	SCALE
Ø	PLC	B	-	APPLICATION SPEC	SHEET
Ø	PLC	B	-	APPLICATION SPEC	OF
Ø	PLC	B	-	APPLICATION SPEC	REV
Ø	PLC	B	-	APPLICATION SPEC	J

222001

A