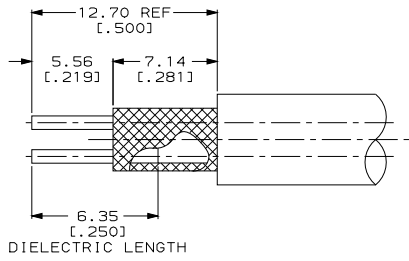


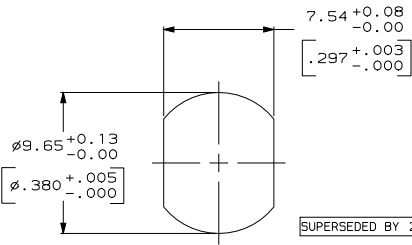
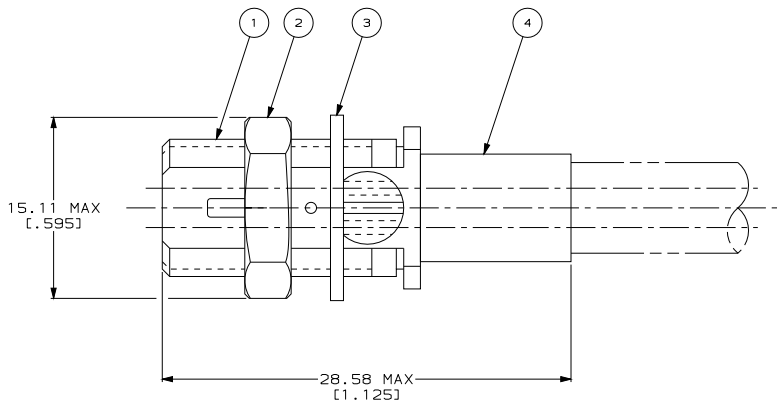
DRAWING MADE IN THIRD ANGLE PROJECTION
 THIS DRAWING IS UNPUBLISHED. RELEASED FOR PUBLICATION .19
 © COPYRIGHT 19 BY AMP INCORPORATED. ALL INTERNATIONAL RIGHTS RESERVED.

REVISIONS						
LOC	DIST	P	F	ZONE	LTR	DESCRIPTION
DF	XO				G	REV PER 0H14-0112-04 CT
						DATE
						1-14-05
						APPD
						DE

1. PARTS PACKAGED UNASSEMBLED
2. 6.35 [.250] MAXIMUM PANEL THICKNESS
3. CRIMP TOOL: 69311-1
4. SEE I.S. 1833



RECOMMENDED STRIP LENGTH



RECOMMENDED PANEL CUTOUT

SUPERSEDED BY	CABLE SIZE	329056	1-329492-1	1-330249-1	2-330245-4	225689-4
2-329941-3	BELDEN 8451, 8641 & 8761	1-329960-1	1-329492-1	1-330249-1	2-330245-3	225689-2
2-329941-1	BELDEN 8737	1-329960-1	1-329492-1	1-330249-1	2-330245-4	225689-1
		④ FERRULE QTY=1	③ LOCKWASHER QTY=1	② NUT QTY=1	① RECEPTACLE ASSEMBLY QTY=1	PART NUMBER

PART NO	
DO NOT SCALE PRINT. UNLESS SPECIFIED DIMENSIONS IN mm (INCHES) TOLERANCES ON : 2 PLC DEC ± 0.41 (.016) 3 PLC DEC ± - ANGLES ± - MATERIAL - FINISH - WEIGHT -	DR 06-25-91 B.SCOTT CHK 02/05/93 G.MICHAEL APPD 02/05/93 G.MICHAEL APPD 02/05/93 J.DAVIS PRODUCT SPEC - APPLICATION SPEC - SIZE 00779 SCALE 5:1 CAGE CODE 00779 DRAWING NO 225689 SHEET 1 OF 1

CUSTOMER DRAWING