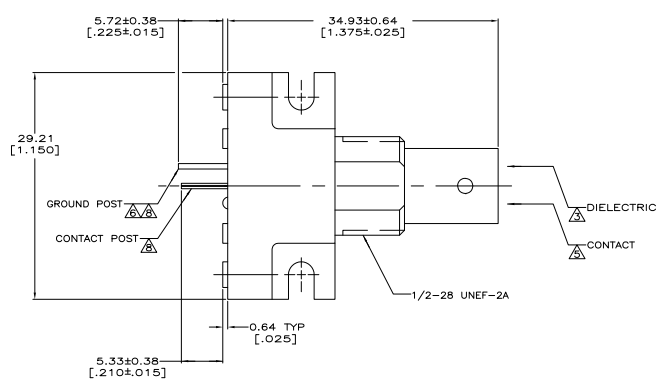
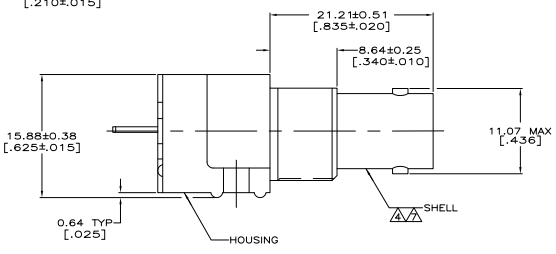


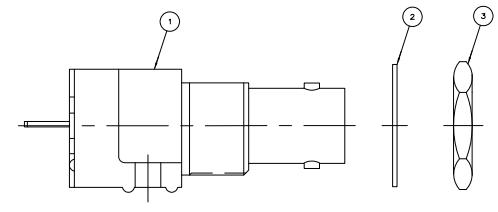
REV	DATE	DESCRIPTION	BY	CHK	APP
AJ	16	REVISED PER EC 0514-0468-04			



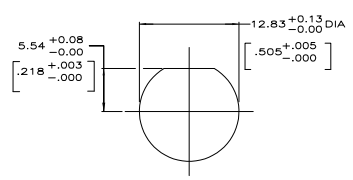
- ▲ POLYESTER PBT PER MIL-M-24519, TYPE GPT-15F, UL94V-0 RATED, COLOR:NATURAL
- ▲ POLYESTER PBT PER MIL-M-24519, TYPE GPT-15F, UL94V-0 RATED, COLOR:BLACK
- ▲ POLYMETHYLPENTENE, GENERAL PURPOSE.
- ▲ ZINC PER QQ-Z-363.
- ▲ PHOSPHOR BRONZE PER QQ-B-750.
- ▲ BRASS PER ASTM-B-453.
- ▲ NICKEL PLATE PER QQ-N-290, 3.81 μm [0.00150] MINIMUM THICK.
- ▲ TIN PLATE PER ASTM-B-545, 3.81 μm [0.00150] MINIMUM THICK.
- ▲ GOLD PLATE PER MIL-G-45204, 0.76 μm [0.00030] MINIMUM THICK.
- 10. SEE INSTRUCTION SHEET 2769.



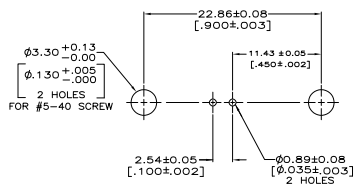
VIEW A



VIEW B



RECOMMENDED PANEL CUTOUT



PCB CONFIGURATION

			B	1-329631-2	1-329632-2	226987-7	226987-8
OBsolete	▲	▲	A	-	-	-	226987-7
SUPERSEDED BY 226993-6 OR 227222-6	▲	▲	A	-	-	-	226987-6
SUPERSEDED BY 226993-2 OR 227222-2	▲	▲	A	-	-	-	226987-3
OBsolete	-	-	B	1-329631-2	1-329632-2	226987-1	226987-2
SUPERSEDED BY 226993-1 OR 227222-1	▲	▲	A	-	-	-	226987-1

CONTACT PLATING	HOUSING MATERIAL	VIEW	3 JAM NUT QTY=1	2 LOCKWASHER QTY=1	1 ASSEMBLY QTY=1	PART NUMBER
-----------------	------------------	------	-----------------	--------------------	------------------	-------------

THIS DRAWING IS A CONTROLLED DOCUMENT. DATE: 05-30-11. BY: SCOTT. CHECKED: 6-7-11. APPROVED: [Signature].

DESIGNER: [Name]. DRAWN: [Name]. DATE: 108-12078. REV: [Number].

THIS DRAWING IS A CONTROLLED DOCUMENT. DATE: 05-30-11. BY: SCOTT. CHECKED: 6-7-11. APPROVED: [Signature].

DESIGNER: [Name]. DRAWN: [Name]. DATE: 108-12078. REV: [Number].

THIS DRAWING IS A CONTROLLED DOCUMENT. DATE: 05-30-11. BY: SCOTT. CHECKED: 6-7-11. APPROVED: [Signature].

DESIGNER: [Name]. DRAWN: [Name]. DATE: 108-12078. REV: [Number].