

4

3

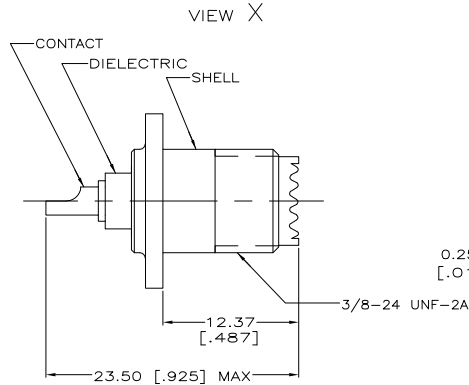
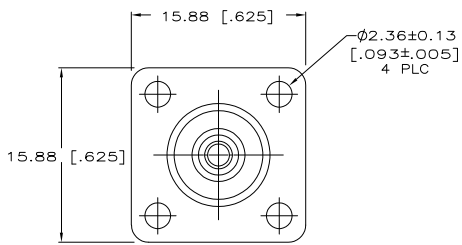
2

1

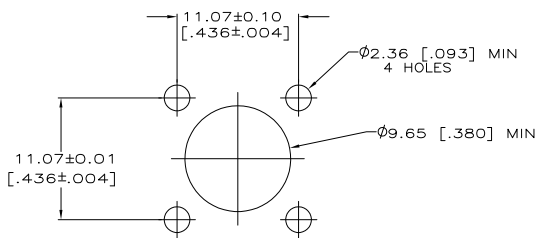
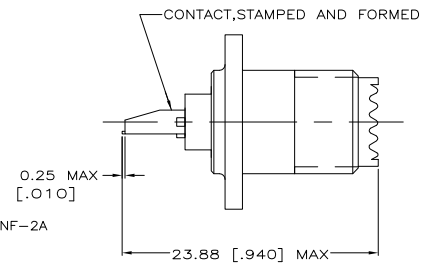
THIS DRAWING IS UNPUBLISHED. RELEASED FOR PUBLICATION. BY TYCO ELECTRONICS CORPORATION. ALL RIGHTS RESERVED.

LOC	DIST	REVISIONS					
AJ	16	P	LTR	DESCRIPTION	DATE	BY	APPD
		H1		REVISED PER ECO-06-018709	18SEP2006	MC	JH

- ▲ ZINC PER QQ-Z-363
- ▲ PTFE PER MIL-P-19468
- ▲ PHOS BRONZE PER QQ-B-750
- ▲ POLYMETHYLPENTENE GENERAL PURPOSE
- ▲ BRASS PER QQ-B-626
- ▲ TIN PL PER MIL-T-10727, 3.81μm [.000150] MIN THK
- ▲ TIN PL PER MIL-T-10727B TYPE 2, 2.54μm [.000100] MIN THK
- ▲ NICKEL PL PER QQ-N-290, 3.81μm [.000150] MIN THK
- ▲ TIN PL PER MIL-T-10727B TYPE 2, 2.54μm [.000100] MIN THK (POST PLATED)
- ▲ BLACK CHROMATE PLATE OVER ZINC PLATE PER ASTM-B-633
- ▲ BLACK NICKEL PLATE



VIEW Y
SAME AS VIEW X EXCEPT AS SHOWN



RECOMMENDED PANEL CUTOUT

OBSELETE	Y	▲	▲	▲	▲	▲	▲	226601-6
OBSELETE	Y	▲	▲	▲	▲	▲	▲	226601-5
OBSELETE	X	▲	▲	▲	▲	▲	▲	226601-4
	Y	▲	▲	▲	▲	▲	▲	226601-3
OBSELETE	Y	▲	▲	▲	▲	▲	▲	226601-2
OBSELETE	X	▲	▲	▲	▲	▲	▲	226601-1

VIEW	SHELL	DIELECTRIC	CONTACT	PART NO
------	-------	------------	---------	---------

THIS DRAWING IS A CONTROLLED DOCUMENT. **TYCO Electronics** Tyco Electronics Corporation, Harrisburg, PA 17105-3608

DATE: 6-25-91, BY: M. SNEED, CHECKED: S. HENRY

RECEPTACLE, PANEL, MINIATURE UHF

SIZE: A2, CASE CODE: 00779, DRAWING NO: 226601, RESTRICTED TO: H1

SCALE: 4:1, SHEET: 1 of 1, REV: H1

AMP 1471-9 REV 31MM2000

226601

A