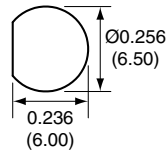
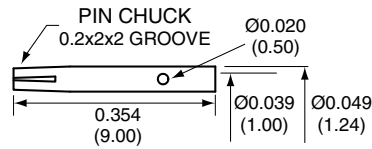


1		
Description	Material	Finish
Body	Brass	Nickel
Socket	BE CU	Gold
Insulation	Teflon	Teflon
O Ring	Si Rubber	Rubber
Crimp Ring	Brass	Nickel
Washer	Brass	Nickel
Nut	Brass	Nickel

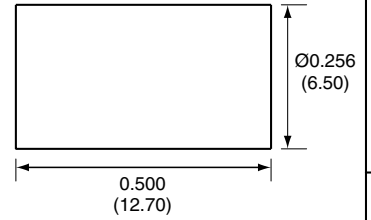
RECOMMENDED MOUNTING HOLE



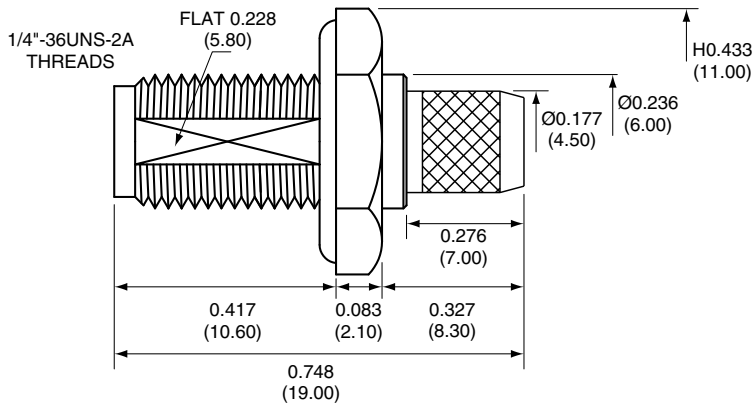
SOCKET



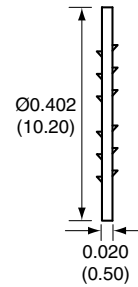
CRIMP RING



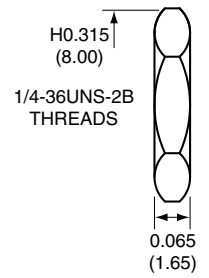
SIDE VIEW



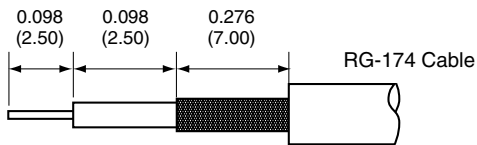
WASHER



NUT



RECOMMENDED CABLE STRIPPING DIMENSIONS



CON SMA014-R58 ASSEMBLY INSTRUCTIONS

1. Solder the socket to the center conductor.
2. Insert the socket, center conductor, and insulation into the body.
3. Wrap the braid around the tail of the body and crimp the ring with a hex crimp tool.

Title SMA FEMALE BULKHEAD MOUNT CABLE END CRIMP WITH O-RING FOR RG58 CABLE		CONNECTOR CITY 159 ORT LANE MERLIN, OR 97532 PH (541)-471-6256 FAX (541)-471-6251	
Part No. CON SMA014-R58	Revision: 1.0		
Dimensions: INCHES (mm)	Date: 5/21/2007	Sheet 1 of 1	

CONNECTOR CITY
THE VALUE OF CONNECTIONS

1

2

3

4