



## V-Bite® PC Edge Mount

The V-Bite® is an industry award winning design PCB connector with all the advantages a designer could want. It edge mounts to the board which offers the lowest profile and utilizes very little PCB real estate. It lends itself to surface mount and through-hole soldering techniques. There are versions for IR and convection reflow soldering. Because the connector locks into place both above and below the PCB it disperses rotational torque relief to the board and not the solder points. The V-Bite® design offers the lowest VSWR ratings due to the straight through-put contact design. No right angles for reflection. Available in 50 and 75 ohm, threaded and non-threaded. Other options for PCB thickness available. Other interfaces available. See "F", BNC Twin, TNC and N sections.

Part Number	RoHS	Description	Imp	Contact	Fig. No.
361V504ER	☑	BNC Jack W/ Teflon For Reflow Solder	50Ω	Phos./Gold	39A
361V504ET	☑	BNC Threaded Jack W/ Teflon For Reflow Solder	50Ω	Phos./Gold	39
361V504EFT	☑	BNC Threaded Jack W/ Teflon Insulator/Flange	50Ω	Phos./Gold	39B
361V509E	☑	BNC Jack W/ Polyethylene Insulator	50Ω	Phos./Tin	39A
361V509ET	☑	BNC Threaded Jack W/ Polyethylene Insulator	50Ω	Phos./Tin	39
361V704ER	☑	BNC Jack W/ Teflon For Reflow Solder	75Ω	Phos./Gold	39A
361V704ET	☑	BNC Threaded Jack W/ Teflon For Reflow Solder	75Ω	Phos./Gold	39
361V704EFT	☑	BNC Threaded Jack W/ Teflon Insulator/Flange	75Ω	Phos./Gold	39B
361VH704EFT	☑	BNC Threaded Jack W/ Teflon Insulator/Flange 4GHZ	75Ω	Phos./Gold	---
361V709E	☑	BNC Jack W/ Polyethylene Insulator	75Ω	Phos./Gold	39A
361V709ET	☑	BNC Threaded Jack W/ Polyethylene Insulator	75Ω	Phos./Gold	39
361E704ER	☑	BNC End launch W/Teflon for Reflow Solder, gold plated	75Ω	Phos./Gold	39H
361KNT	☑	Knurled nut (361 series)	NA	---	---
3M61V704	☑	Mini-BNC Jack W/Teflon for Reflow	75Ω	Phos./Gold	---
461V504E	☑	Twin-BNC Jack W/ Teflon For Reflow Solder	75Ω	Phos./Gold	***
561V504E	☑	TNC Jack W/ Teflon For Reflow Solder	50Ω	Phos./Gold	***
861V509E	☑	F type Edge Mount Jack (RG59)	*NCI	Phos./Gold	39C
861V509ER	☑	F type Edge Mount Jack w/ TFE Insul. for Reflow (RG59)	*NCI	Brass/Gold	39C
861V509ER6	☑	F type Edge Mount Jack w/ TFE Insul. for Reflow (RG6, RG59)	75Ω	Brass/Gold	39C
861VH509ER6	☑	F type Edge Mount Jack w/ TFE Ins. for Reflow (RG6,59) 5GHZ	75Ω	Brass/Gold	39C
862V509ER6	☑	F type Edge Mount Plug w/TFE insul for reflow	75Ω	Brass/Gold	---
161V504E	☑	N type Edge Mount Jack w/ TFE Insul for reflow	50Ω	Brass/Gold	39D
161V504EFT	☑	N type Edge Mount Jack w/ Flange TFE Insul for reflow	50Ω	Brass/Gold	39E
162V504E	☑	N Type Edge Mount Plug (TFE Insul for reflow)	50Ω	Brass/Gold	39F
R061V704ER	☑	RCA Type Edge Mount Jack w/TFE for reflow	75Ω	Brass/Gold	39G

☑ RoHS compliant reflow or wave solder    ☑ RoHS compliant wave solder only

\*NCI (non constant impedance)



Patented V-Bite®  
 SnapsIntoPCB  
 SurfaceMountCenterContact  
 Pick&PlaceVersionAvailable



Fig. 39

Fig. 39A

Fig. 39B



Fig. 39C

Fig. 39D

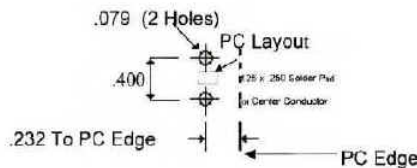
Fig. 39E



Fig. 39F

Fig. 39G

Fig. 39H



[Back to Index](#)