

FEATURES:

- Connector to accept cable RG58 C/U
- Connector shall meet interface requirements of MIL-STD-348

MATERIALS:

Body and Hardware – Brass
 Outer Contact – Gold Plated Brass
 Center Contact – Gold Plated Brass
 Dielectric – PTFE
 Gasket – Silicone Rubber

Finish:

Body and Fittings – Tarnish Resistant
 Outer Contact – Tarnish Resistant
 Center Contact – Gold Plated

RATINGS:

Operating Temperature: -65°C (-85°F) to +165°C (+329°F)
 Operating Voltage: 500 VRMS Max.
 Nominal Impedance: 50 Ohms

ORDERING INFORMATION: Model 4997

All dimensions are in inches. Tolerances (except noted): .xx = ±.02" (.51 mm), .xxx = ±.005" (.127 mm).
 All specifications are to the latest revisions. Specifications are subject to change without notice.
 Registered trademarks are the property of their respective companies.

Made in USA

6/9/99

SY/EH/LS

S:\Engineering\Release\DataSheets\FIukeDataSheet\ID_AI_4997_2_01.doc

Sales: 800-490-2361 Fax: 888-403-3360

Technical Assistance: 800-241-2060

PomonaACCESS 90108 (800) 444-6785 or (425) 446-6010
 More drawings available at www.pomonaelectronics.com

Page 1 of 2

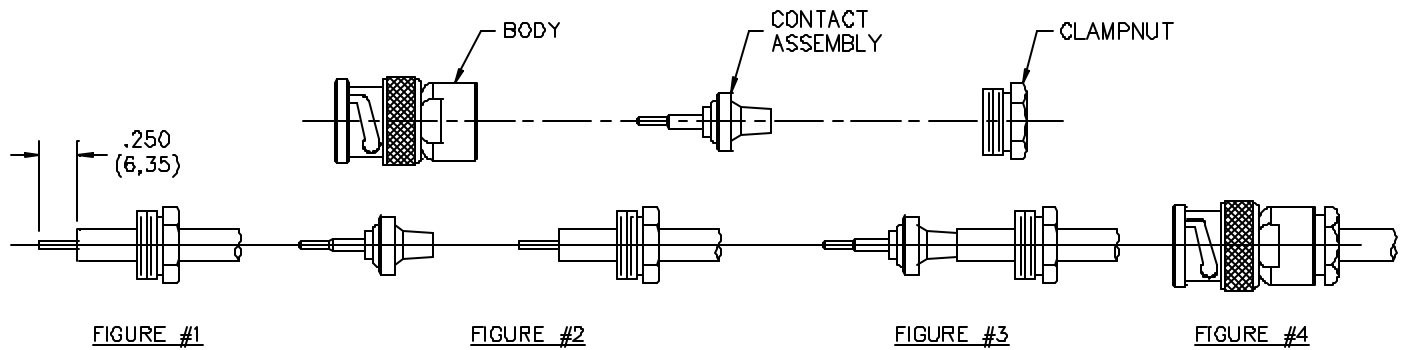


FIGURE #1

- A. Strip cable jacket and braid and dielectric to dimensions shown.
- B. Slide clamp nut over cable.

FIGURE #2

- C. Push the contact assembly unto the cable. The tapered ferrule (of the contact assembly) enters under the braid, push on the contact assembly until the cable covers the entire tapered area of the ferrule.

FIGURE #3

- D. Solder the cable center conductor to the center contact (of the contact assembly)

FIGURE #4

- E. Push the body unto the cable assembly.
- F. Tighten the clampnut.

All dimensions are in inches. Tolerances (except noted): $.xx = \pm .02''$ (.51 mm), $.xxx = \pm .005''$ (.127 mm).
 All specifications are to the latest revisions. Specifications are subject to change without notice.
 Registered trademarks are the property of their respective companies.

Made in USA

6/9/99

SY/EH/LS

S:\Engineering\Release\DataSheets\FI\ukeDataSheet\ID_AI_4997_2_01.doc

Sales: 800-490-2361 Fax: 888-403-3360

Technical Assistance: 800-241-2060

PomonaACCESS 90108 (800) 444-6785 or (425) 446-6010

More drawings available at www.pomonaelectronics.com

Page 2 of 2