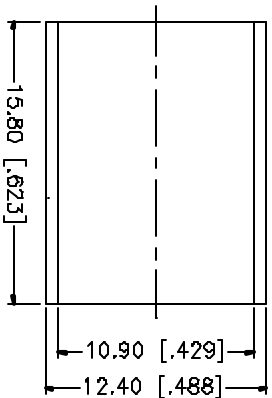
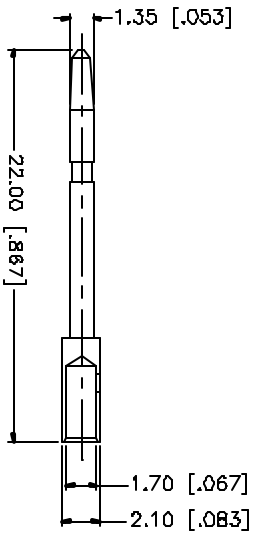
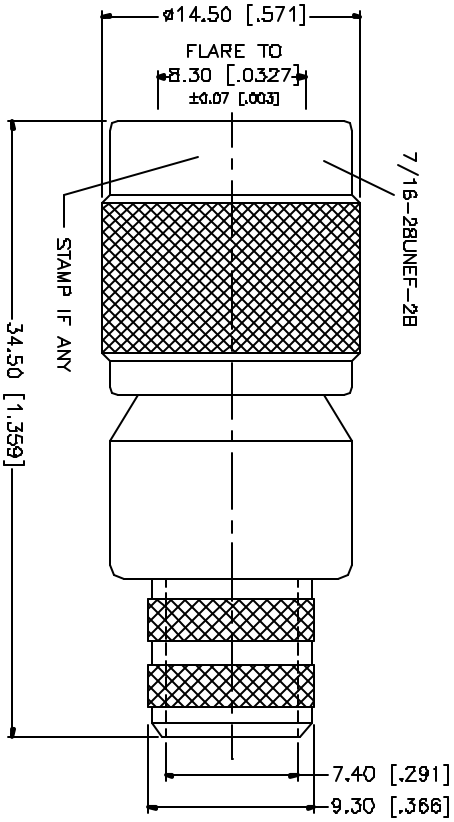
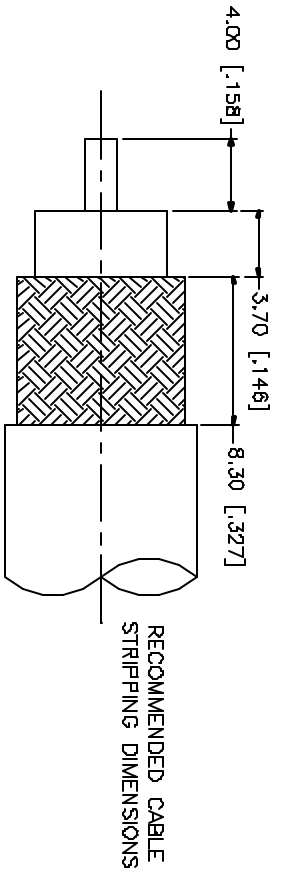


REV.	DATE	DESCRIPTION
NC	08/15/04	INITIAL RELEASE



- CRIMP NOTES:**
1. CRIMPED FERRULE  
HEX CRIMP SIZE .429"
  2. CRIMPED CONTACT PIN  
HEX CRIMP SIZE .068"

REV.	DATE	DESCRIPTION	MATERIAL	FINISH	QTY
8					
7					
6					
5					
4		FERRULE	COPPER	NICKEL	1
3		CONTACT PIN	BRASS	GOLD	1
2		INSULATOR	TEFLON	NATURAL	1
1		BODY	BRASS	NICKEL	1
		DESCRIPTION			

UNLESS OTHERWISE SPECIFIED DIMENSIONS ARE IN MILLIMETERS (DIMENSIONS IN [ ] ARE IN INCHES AND FOR CUSTOMER REFERENCE ONLY.)	APPROVALS	DATE
USING CUSTOMER SPECIFIED DIMENSIONS AND TOLERANCES FOR MILLIMETERS ARE: D.5 - 8mm ± 0.20mm 8 - 30mm ± 0.40mm 30 - 120mm ± 0.50mm	DRAWN G.R.S.	08/15/04
USING CUSTOMER SPECIFIED DIMENSIONS AND TOLERANCES FOR INCHES ARE: .020 - .315 = ± 0.007" .315 - 1.180 = ± 0.015" 1.180 - 4.724 = ± 0.020"	DHECKED	
DD NOT SCALE DRAWING	ISSUED	
	SHEET 1 OF 1	

CAD FILE C:/122/122499.DWG	PART NO. 122499	REV. NO. 122499.DWG	REV. NC	BZE A	SCALE NA
-------------------------------	--------------------	------------------------	---------	-------	----------

**Amphenol Connex**

TNC CRIMP PLUG  
(FOR BELDEN 8213, 9230, 9292, 9011)