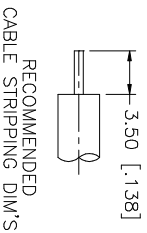
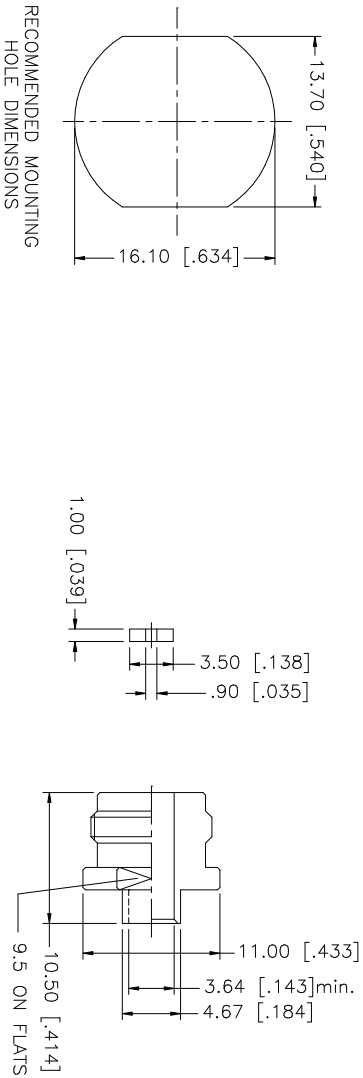
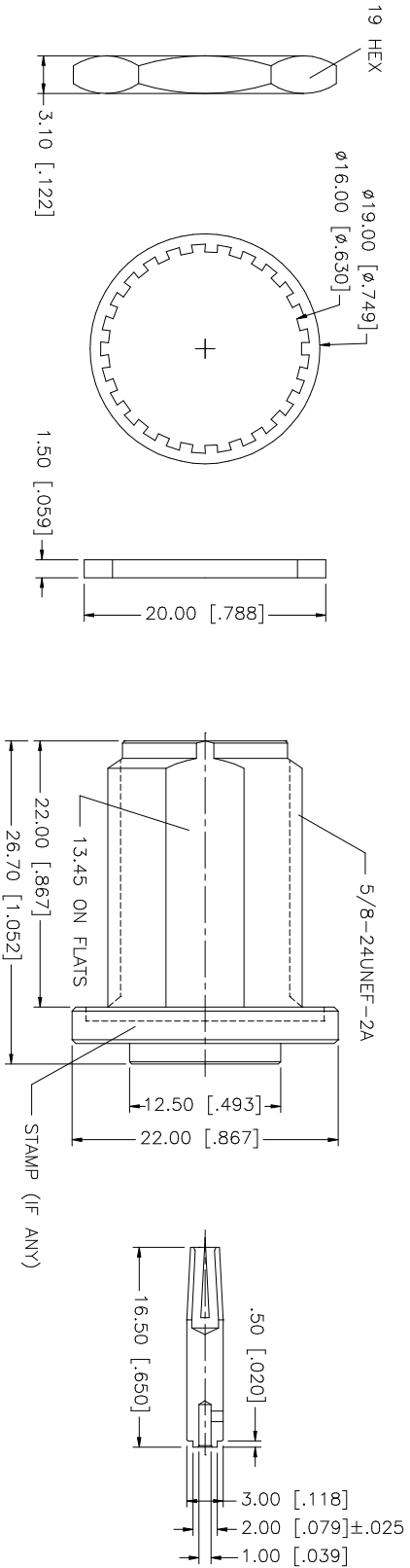


REV.	DATE	DESCRIPTION
A	12/09/03	UPDATE DRAWING FORMAT



NOTE:
1. CRIMPED CONTACT PIN,
HEX CRIMP SIZE .100"

QTY	DESCRIPTION	MATERIAL	FINISH	QTY	DO NOT SCALE DRAWING	CAD FILE	DWG. NO.	REV.	SIZE	SCALE
1	HEX NUT	BRASS	NEXCOTE	1		C:/172/172137.DWG	172137.DWG	A	A	NA
1	LOCK WASHER	BRASS	NEXCOTE	1						
1	GASKET	SILICONE	RED	1						
1	SOLDER NUT	BRASS	GOLD	1						
1	INSULATOR	TEFLON	NATURAL	1						
1	CONTACT PIN	PHOS. BRONZE	GOLD	1						
1	INNER BODY	BRASS	NEXCOTE	1						
1	INSULATOR	TEFLON	NATURAL	1						
1	OUTER BODY	BRASS	NEXCOTE	1						
	DESCRIPTION	MATERIAL	FINISH	QTY	DO NOT SCALE DRAWING	CAD FILE	DWG. NO.	REV.	SIZE	SCALE

Amphenol **Comnex**

N BULKHEAD DIRECT SOLDER JACK
(FOR .141 SEMI RIGID CABLE)

172137