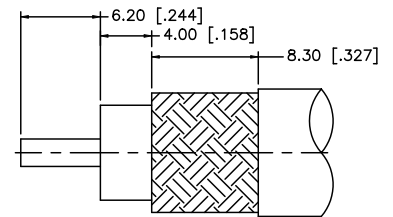
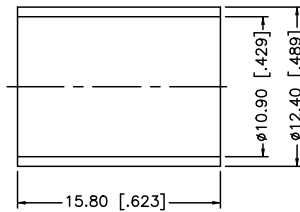
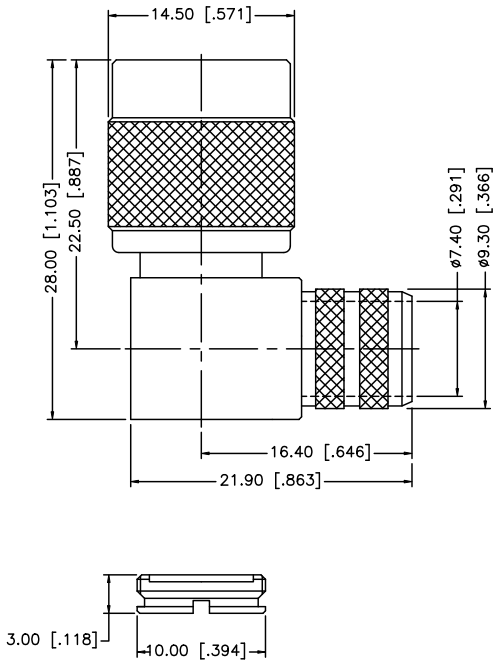


REV.	DATE	ECR NO.	DESCRIPTION
A	04/05/03	-	UPDATE DRAWING FORMAT
B	08/04/08	-	REVISE PART DESCRIPTION FROM "JACK" TO "PLUG"



RECOMMENDED
CABLE STRIPPING DIM'S

DESCRIPTION	MATERIAL	FINISH	QTY	DO NOT SCALE DRAWING	APPROVALS	DATE	Amphenol Connex						
8							Part Description: TNC R/A CRIMP PLUG – LMR 400 CABLE (FOR BELDEN 9913, 9914)						
7						Part No.: 122416							
6	COVER	BRASS	NICKEL	1	DRAWN	GRS				08/04/08	DWG. NO.: 122416.DWG		
5	FERRULE	COPPER	NICKEL	1	CHECKED						REV. B	SIZE A	SCALE NA
4	GASKET	RUBBER	RED	1	ISSUED								
3	CONTACT PIN	BRASS	GOLD	1	SHEET	1 OF 1							
2	INSULATOR	PTFE	NATURAL	1	<small>UNLESS OTHERWISE SPECIFIED DIMENSIONS ARE IN MILLIMETERS; DIMENSIONS IN () ARE IN INCHES AND FOR CUSTOMER REFERENCE ONLY.</small> <small>UNLESS OTHERWISE SPECIFIED TOLERANCES FOR MILLIMETERS ARE:</small> 0.5 – 8mm ± 0.20mm 8 – 30mm ± 0.40mm 30 – 120mm ± 0.50mm <small>UNLESS OTHERWISE SPECIFIED TOLERANCES FOR INCHES ARE:</small> .020 – .315 = ± 0.007" .315 – 1.180 = ± 0.015" 1.180 – 4.724 = ± 0.020"								
1	HOUSING/BODY	BRASS	NICKEL	1	<small>DO NOT SCALE DRAWING</small> CAD FILE C:/122/122416.DWG								