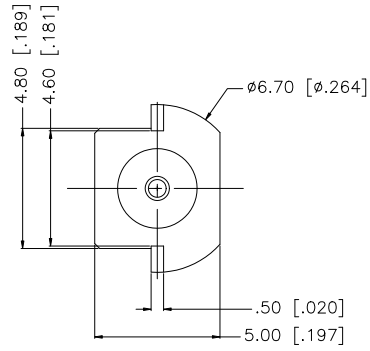
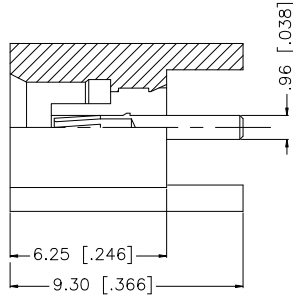


REV.	DATE	ECR NO.	DESCRIPTION
NC	12/15/98	-	INITIAL RELEASE
A	05/31/08	-	UPDATE DRAWING FORMAT, REVISE INSULATOR TO PTFE



8					<small>UNLESS OTHERWISE SPECIFIED DIMENSIONS ARE IN MILLIMETERS. DIMENSIONS IN [] ARE IN INCHES AND FOR CUSTOMER REFERENCE ONLY.</small> <small>UNLESS OTHERWISE SPECIFIED TOLERANCES FOR MILLIMETERS ARE:</small> 0.5 - 8mm ± 0.20mm 8 - 30mm ± 0.40mm 30 - 120mm ± 0.50mm <small>UNLESS OTHERWISE SPECIFIED TOLERANCES FOR INCHES ARE:</small> .020 - .315 = ± 0.007" .315 - 1.180 = ± 0.015" 1.180 - 4.724 = ± 0.020"	APPROVALS	DATE	<h1 style="color: blue;">Amphenol Connex</h1>				
7				DRAWN		GRS	05/31/08				PART DESCRIPTION MCX EDGECARD P.C.B. MOUNT JACK	
6				CHECKED				PART NO. 252151				
5				ISSUED							DWG. NO. 252151.DWG	
4				SHEET	1 OF 1		REV.	A	SIZE	A		
3	CONTACT PIN	BER. COPPER	GOLD	1								
2	INSULATOR	PTFE	NATURAL	1								
1	BODY	BRASS	GOLD	1								
	DESCRIPTION	MATERIAL	FINISH	QTY	DO NOT SCALE DRAWING	CAD FILE	C:/252/252151.DWG					