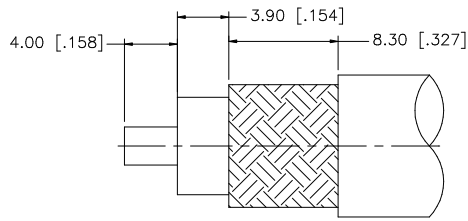
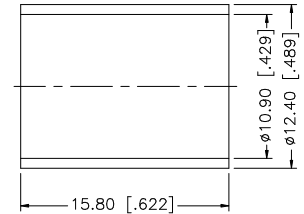
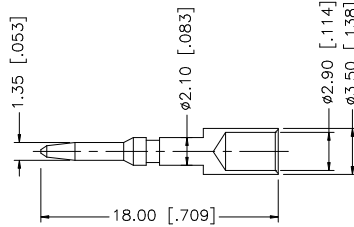
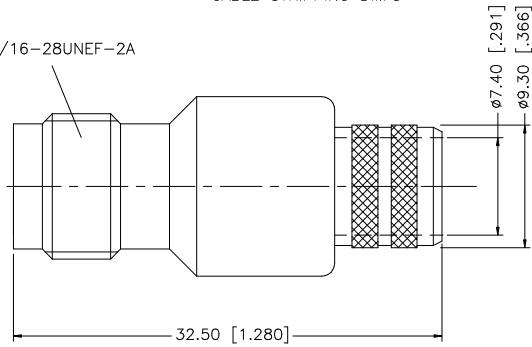


| REV. | DATE     | DESCRIPTION           |
|------|----------|-----------------------|
| NC   | 05/05/97 | INITIAL RELEASE       |
| A    | 01/11/07 | UPDATE DRAWING FORMAT |



RECOMMENDED  
CABLE STRIPPING DIM'S

7/16-28UNEF-2A



NOTE:

1. CRIMPED FERRULE HEX CRIMP SIZE .429"
2. CRIMPED CONTACT PIN HEX CRIMP SIZE .118"

| 8 |             |          |         |     | UNLESS OTHERWISE SPECIFIED DIMENSIONS ARE IN MILLIMETERS; DIMENSIONS IN [ ] ARE IN INCHES AND FOR CUSTOMER REFERENCE ONLY.             | APPROVALS | DATE                | <b>Amphenol Connex</b> |                             |  |  |          |
|---|-------------|----------|---------|-----|--|-----------|---------------------|------------------------|-----------------------------|--|--|----------|
| 7 |             |          |         |     | UNLESS OTHERWISE SPECIFIED TOLERANCES FOR MILLIMETERS ARE:<br>0.5 - 8mm ± 0.20mm<br>8 - 30mm ± 0.40mm<br>30 - 120mm ± 0.50mm           | DRAWN     | G.R.S.              |                        |                             |  |  | 01/11/07 |
| 6 |             |          |         |     | UNLESS OTHERWISE SPECIFIED TOLERANCES FOR INCHES ARE:<br>.020 - .315 = ± 0.007"<br>.315 - 1.180 = ± 0.015"<br>1.180 - 4.724 = ± 0.020" | CHECKED   |                     |                        | PART NO.<br><b>122392RP</b> |  |  |          |
| 5 |             |          |         |     |  | ISSUED    |                     |                        |                             |  |  |          |
| 4 | FERRULE     | COPPER   | NICKEL  | 1   |  | SHEET     | 1 OF 1              |                        | DO NOT SCALE DRAWING        |  |  |          |
| 3 | CONTACT PIN | BRASS    | GOLD    | 1   |  | CAD FILE  | C:/122/122392RP.DWG |                        |                             |  |  |          |
| 2 | INSULATOR   | TEFLON   | NATURAL | 1   |  |           |                     |                        |                             |  |  |          |
| 1 | BODY        | BRASS    | NICKEL  | 1   |  |           |                     |                        |                             |  |  |          |
|   | DESCRIPTION | MATERIAL | FINISH  | QTY |  |           |                     |                        |                             |  |  |          |
|   |             |          |         |     |  |           |                     |                        |                             |  |  |          |