

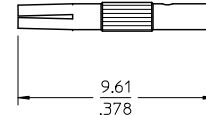
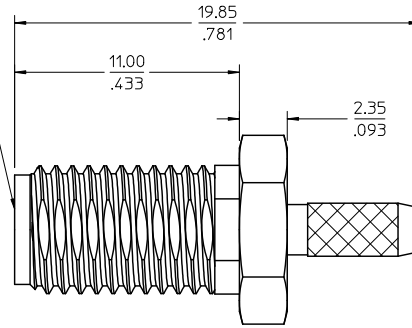
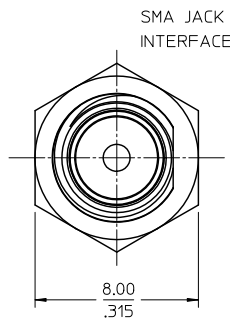
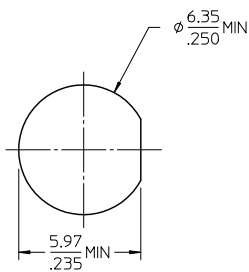
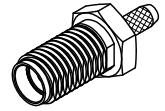
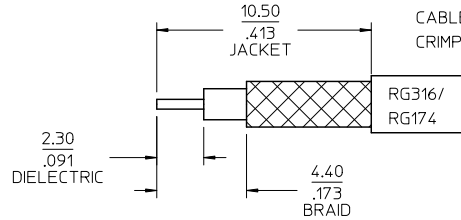
MATERIALS AND FINISHES

BODY, CRIMP TUBE, JAM NUT: BRASS
PLATED GOLD

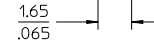
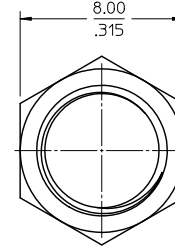
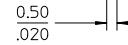
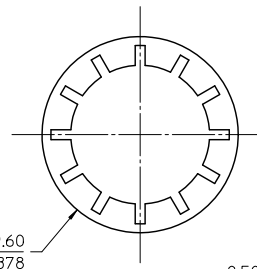
CONTACT: BERYLLIUM COPPER
PLATED GOLD

INSULATOR: TEFLON

LOCK WASHER: PHOSPHOR BRONZE
PLATED GOLD



SUGGESTED PANEL CUTOUT
MAX PANEL THICKNESS 3.18 (.125)



73251-0261	DOES NOT INCLUDE WASHER AND NUT
73391-0260	INCLUDES WASHER AND NUT
PART NO.	DESCRIPTION

PS-73436-009	ELEC/MECH PERFORMANCE
SPECIFICATION	DESCRIPTION

CHANGE CRIMP TUBE
9.53 WAS 7.01
PER RF11-E057

EC NO. URF2011-0477
DRAWN BY: DRW:LIN 2011/02/25
CHKD: APPR:MHJANG 2011/03/10

QUALITY SYMBOLS	DESCRIPTION
$\nabla=0$	
$\nabla=0$	

GENERAL TOLERANCES (UNLESS SPECIFIED)	
4 PLACES	± .005
3 PLACES	± .004
2 PLACES	± .003
1 PLACE	± .002
ANGULAR ± 2°	
DRAFT WHERE APPLICABLE MUST REMAIN WITHIN DIMENSIONS	

DIMENSION STYLE	
MM/IN	
DRAWN BY	LYNN LIN
DATE	2001/06/14
CHECKED BY	
DATE	
APPROVED BY	
DATE	
MATERIAL NO.	SEE TABLE
DOCUMENT NO.	SD-73391-026

SCALE	DESIGN UNITS	THIRD ANGLE PROJECTION
	METRIC	
TITLE		
SMA JACK, BULKHEAD FOR RG316/174 SMA-JC		
MOLEX INCORPORATED		
SHEET NO.	1 OF 1	