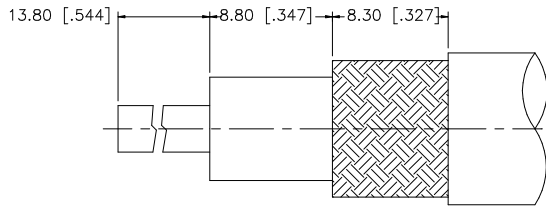
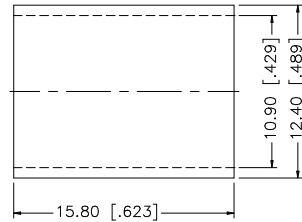
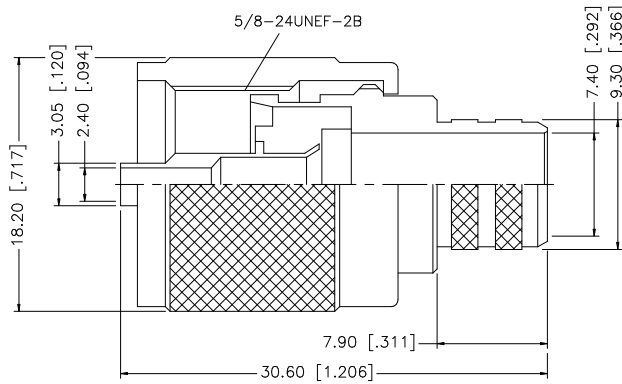


| REV. | DATE | DESCRIPTION |
|------|----------|-----------------------|
| A | 01/30/04 | UPDATE DRAWING FORMAT |
| B | 05/12/07 | ADD CABLE DESCRIPTION |



RECOMMENDED CABLE STRIPPING DIM'S



| 8 | | | | UNLESS OTHERWISE SPECIFIED DIMENSIONS ARE IN MILLIMETERS. DIMENSIONS IN [] ARE IN INCHES AND FOR CUSTOMER REFERENCE ONLY. | APPROVALS | DATE | Amphenol Connex | | | |
|---|-------------|----------|--------|--|----------------------|-------------------|---------------------------|--|--|--|
| 7 | | | | UNLESS OTHERWISE SPECIFIED TOLERANCES FOR MILLIMETERS ARE: 0.5 - 8mm ± 0.20mm 8 - 30mm ± 0.40mm 30 - 120mm ± 0.50mm | DRAWN G.R.S. | 05/12/07 | | | | |
| 6 | | | | UNLESS OTHERWISE SPECIFIED TOLERANCES FOR INCHES ARE: .020 - .315 = ± 0.007" .315 - 1.180 = ± 0.015" 1.180 - 4.724 = ± 0.020" | CHECKED | | PART NO. 182102 | | | |
| 5 | | | | | ISSUED | | | | | |
| 4 | FERRULE | COPPER | NICKEL | 1 | SHEET | 1 OF 1 | REV. B | | | |
| 3 | CONTACT PIN | BRASS | GOLD | 1 | CAD FILE | C:/182/182102.DWG | | | | |
| 2 | INSULATOR | PHENOLIC | YELLOW | 1 | | | SCALE NA | | | |
| 1 | BODY | BRASS | SILVER | 1 | | | | | | |
| | DESCRIPTION | MATERIAL | FINISH | QTY | DO NOT SCALE DRAWING | | | | | |