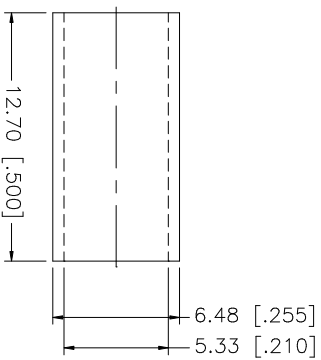
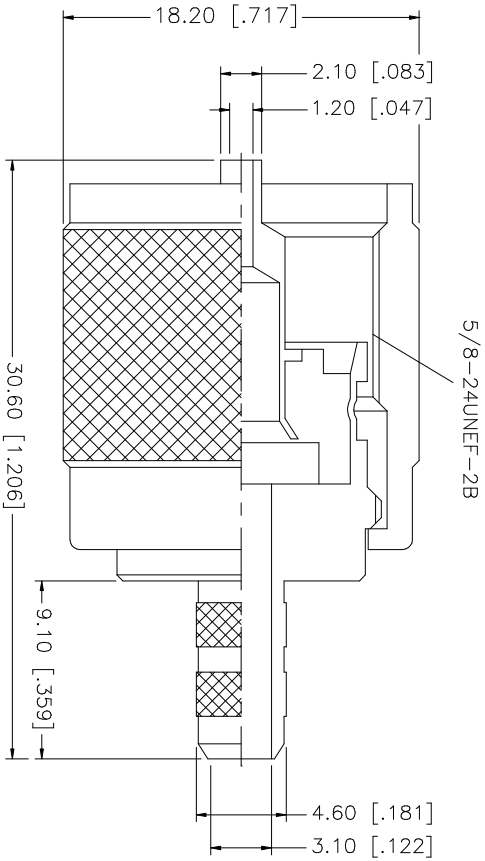
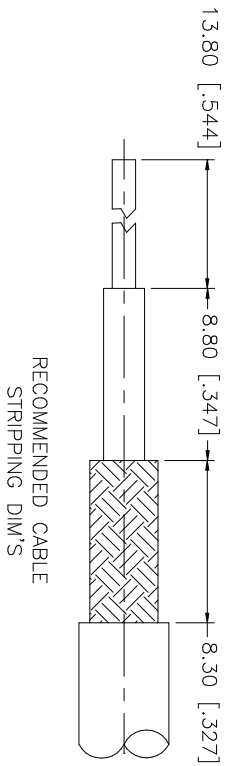


REV.	DATE	DESCRIPTION
A	11/04/03	MODIFY CONTACT OPENING/ PART DESCRIPTION
B	01/15/04	MODIFY PART DESCRIPTION / ADD CRIMP NOTES



NOTE:

1. CRIMPED FERRULE
HEX. CRIMP SIZE .213"
2. CRIMPED CONTACT PIN
HEX. CRIMP SIZE .068"

DESCRIPTION	MATERIAL	FINISH	QTY	UNLESS OTHERWISE SPECIFIED DIMENSIONS ARE IN MILLIMETERS. DIMENSIONS IN [] ARE IN INCHES AND FOR CUSTOMER REFERENCE ONLY.	UNLESS OTHERWISE SPECIFIED TOLERANCES FOR MILLIMETERS ARE:	UNLESS OTHERWISE SPECIFIED TOLERANCES FOR INCHES ARE:	APPROVALS	DATE	PART DESCRIPTION		
1	SHELL/BODY	BRASS	1	1.180 - 4.724 = ± 0.020"	0.5 - 8mm ± 0.20mm	0.20 - .315 = ± 0.007"	DRAWN	G.R.S.	01/15/04	<p>Amphenol Connex</p> <p>UHF CRIMP PLUG (FOR RG-58, 141, LMR200 CABLE)</p> <p>PART NO. 182100</p>	
2	INSULATOR	TEFLON	1	.315 - 1.180 = ± 0.015"	8 - 30mm ± 0.40mm	.315 - 1.180 = ± 0.015"	CHECKED				
3	CONTACT PIN	BRASS	1	1.180 - 4.724 = ± 0.020"	30 - 120mm ± 0.30mm	1.180 - 4.724 = ± 0.020"	ISSUED				
4	FERRULE	COPPER	1				SHEET	1 OF 1			
5		NICKEL	1								
6		GOLD	1								
7											
8											
DESCRIPTION				MATERIAL		FINISH		QTY		DO NOT SCALE DRAWING	
CAD FILE				C:/182/182100.DWG		DWG. NO.		182100.DWG		REV. B SIZE A SCALE NA	