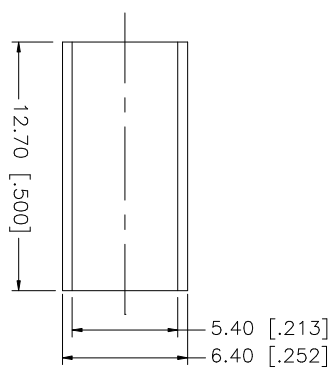
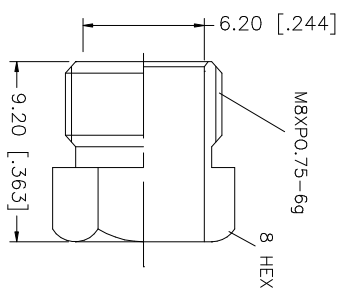
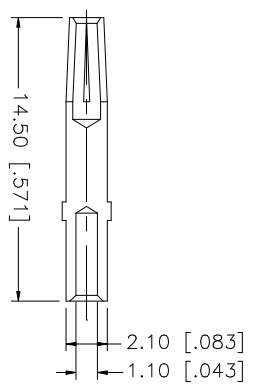
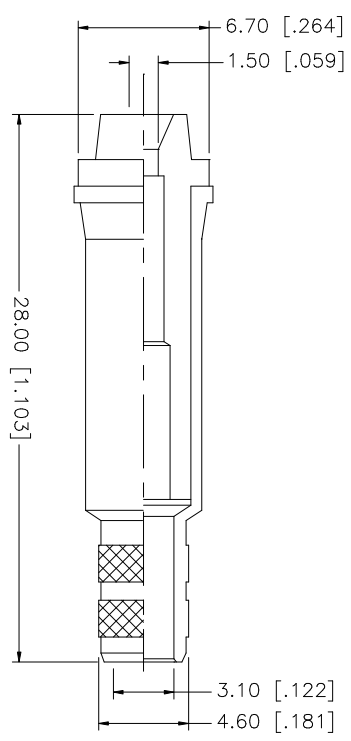
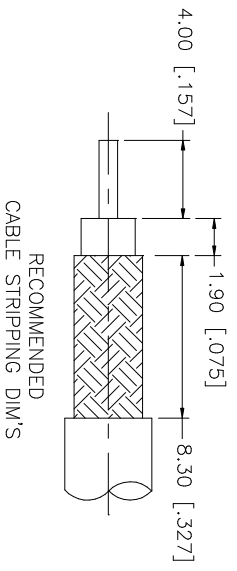


REV.	DATE	DESCRIPTION
A	05/22/03	UPDATE DRAWING FORMAT



NOTE:
1. CRIMPED FERRULE
HEX CRIMP SIZE ".213"
2. CRIMPED CONTACT PIN
HEX CRIMP SIZE ".068"

QTY	FINISH	MATERIAL	DESCRIPTION
1	NICKEL	BRASS	BODY
1	NATURAL	TEFLON	INSULATOR
1	GOLD	PHOS. BRONZE	CONTACT PIN
1	NICKEL	BRASS	HEX NUT
1	NICKEL	COPPER	FERRULE

APPROVALS	DATE	DESCRIPTION
G.R.S.	05/22/03	FME ROTATING NIPPLE (FOR RG-58/U CABLE)

Amphenol Connex

192102

1 OF 1 SHEET

DO NOT SCALE DRAWING

CAD FILE C:/192/192102.DWG

DWG. NO. 192102.DWG

REV. A

SIZE A

SCALE NA