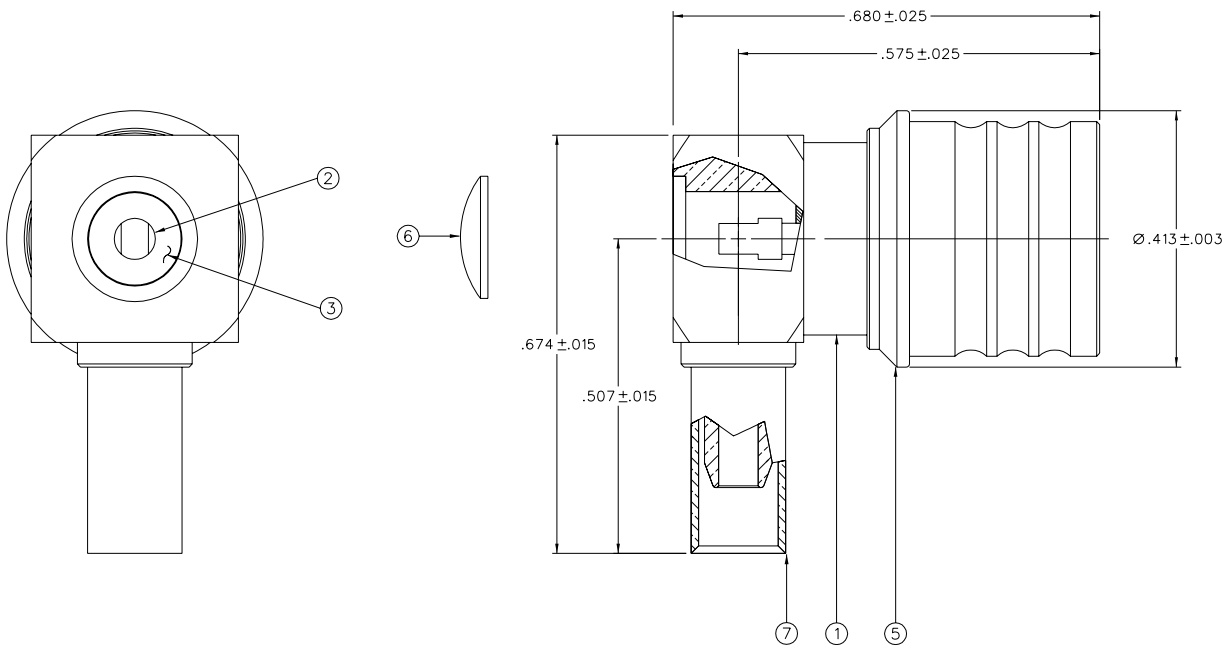


PART NUMBER	ITEM ① BODY	ITEM ② CONTACT	ITEM ③ INSULATOR	ITEM ④ COUPLING DEVICE	ITEM ⑤ DE-COUPLING SLIDER	ITEM ⑥ END CAP	ITEM ⑦ CRIMP SLEEVE
146-0403-107	BRASS TRI-ALLOY PL .0001 MIN OVER COPPER PL .00005 MIN	BRASS GOLD PL .00005 MIN OVER NICKEL PL .00005 MIN OVER COPPER PL .00005 MIN	TEFLON	BERYLLIUM COPPER TRI-ALLOY PL .0001 MIN OVER COPPER PL .00005 MIN	BRASS TRI-ALLOY PL .0001 MIN OVER COPPER PL .00005 MIN	BRASS TRI-ALLOY PL .0001 MIN OVER COPPER PL .00005 MIN	BRASS TRI-ALLOY PL .0001 MIN OVER COPPER PL .00005 MIN

DRAWING NO. C - 146-0403-101/110			
REVISIONS			
PRE-PRODUCTION USE ONLY			
0	9-26-08	A T K U B	9-26-08 ECN 51633



NOTES:

1. SPECIFICATIONS:

IMPEDANCE: 50 OHMS NOMINAL  
 FREQUENCY RANGE: 0-12.4 GHz  
 VSWR: 1.15 + 0.03F  
 WORKING VOLTAGE: 250 VRMS MAX AT SEA LEVEL  
 DIELECTRIC WITHSTANDING VOLTAGE: 750 VRMS MIN AT SEA LEVEL  
 INSULATION RESISTANCE: 5000 MEGOHM MIN  
 CONTACT RESISTANCE:  
 CENTER CONTACT - INITIAL 4.0 MILLIOHM MAX, AFTER ENVIRONMENTAL 6.0  
 OUTER CONDUCTOR - INITIAL 2.0 MILLIOHM MAX, AFTER ENVIRONMENTAL NOT APPLICABLE  
 CABLE BRAID TO CONNECTOR BODY - INITIAL 5.0 MILLIOHM MAX, AFTER ENVIRONMENTAL NOT APPLICABLE

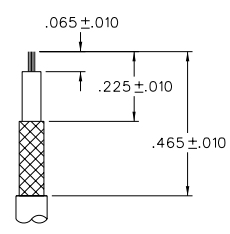
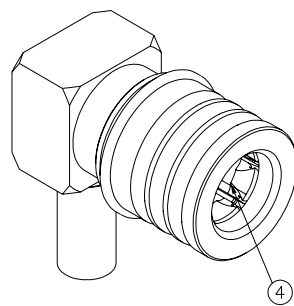
CORONA LEVEL: 190 VOLTS MIN AT 70,000 FEET  
 INSERTION LOSS:  $-15\sqrt{F}$  (F IN GHz) AT 6 GHz  
 RF LEAKAGE: -80 DB MIN AT 3.0 GHz  
 RF HIGH POTENTIAL WITHSTANDING VOLTAGE: 500 VRMS MIN AT 4 AND 7 MHz

MECHANICAL:

ENGAGE FORCE: 5.6 POUNDS TYPICAL  
 DISENGAGE FORCE: 4.5 POUNDS TYPICAL  
 COUPLING RETENTION FORCE: 13.5 POUNDS MIN  
 CONTACT RETENTION: 6 LBS MIN  
 CABLE ACCEPTABILITY: RG 188/U, RG 316/U, RG 161/U, RG 174/U  
 CABLE HEX CRIMP SIZE: .126  
 CABLE RETENTION: 20 LBS MIN AXIAL FORCE  
 DURABILITY: 500 CYCLES MIN

ENVIRONMENTAL:

THERMAL SHOCK: MIL-STD-202, METHOD 107, CONDITION B EXCEPT +85° C HIGH TEMP  
 OPERATING TEMPERATURE: -65 DEG C TO +165 DEG C  
 CORROSION: MIL-STD-202, METHOD 101, CONDITION B  
 SHOCK: MIL-STD-202, METHOD 213, CONDITION I  
 VIBRATION: MIL-STD-202, METHOD 204, CONDITION D  
 MOISTURE RESISTANCE: MIL-STD-202, METHOD 106



CABLE STRIP DIMENSIONS  
4:1

FOR QUOTATION ONLY  
UNAPPROVED

THIS DRAWING TO BE INTERPRETED  
PER ANS Y 14.5M - 1982

"μ STATION"

COMPANY CONFIDENTIAL

TOLERANCE UNLESS OTHERWISE SPECIFIED	DRAWN BY T.A.Kari	DATE 4-09-08		299 Johnson Ave. P.O. Box 1732 Waseca, MN 56093-0832	
DECIMALS	CHECKED BY xxx	DATE x		TITLE RA PLUG QMA TYPE, CONNECTOR CRIMP TYPE, RG-316	CODE NO. C - 146-0403-101/110
.XX	APPROVED BY xxx	DATE x	SCALE	8:1	U/M INCH
.XXX ± .003	RELEASE DATE	x	SHEET 2 OF 2		
MATL					
FINISH					