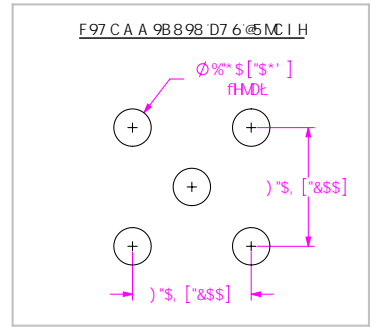
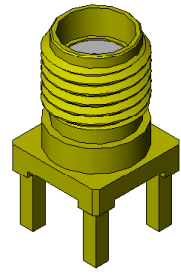
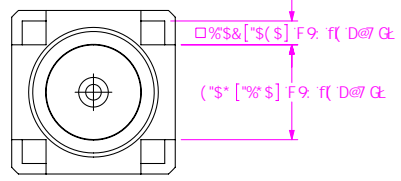
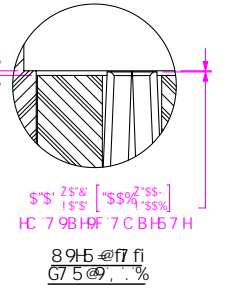
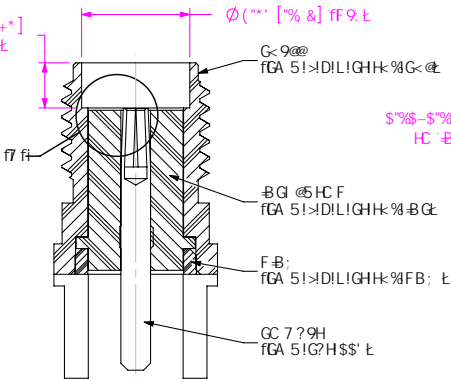
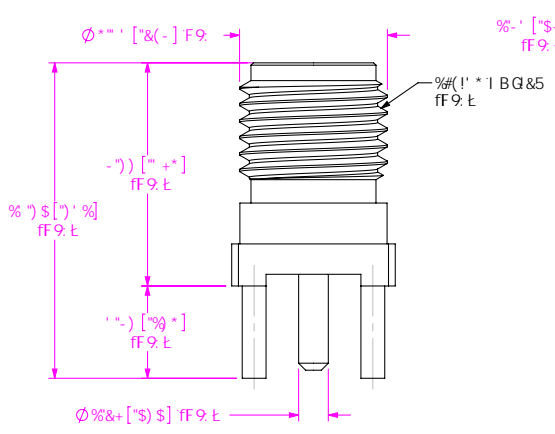
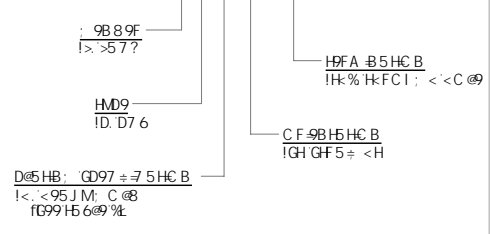
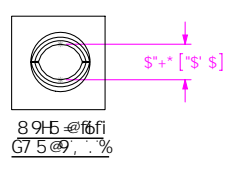
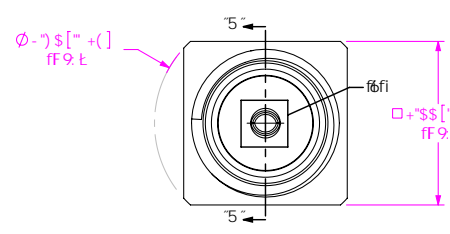


F9J 6€ B 7

8C BCH
G75 @ : FCA
FK: GDFBH

89G ÷ B9B / 8-A 9BGC B9B
B A @A 9HGFGB7 < 9GQ

GA 5!>DILIGHK %



BC H9G

%..... F9DF9G9BHG5 7 F #7 5 @ 8 A 9BGC B"
&"DI G<C I H: C F 7 9: C F B G @HC F: (" (, B O \$ @6A B"
" " 7 9BHDF 7 C BH 5 7 HDI G<C I H: C F 7 9: &" " - B O @6A B"
(" D5FHGC 69D57?5: 9B B HF5M / ÷ E I 5BH#M-G @9GH: 5B < 5 @
" " HF5M D5FHGC 69D57?5: 9B B 7 C < 9G J 9: C 5 A
") Fc < g 7 C A D @ 5 BH

WPBYH/9L/9J UI TPBK : PA 67 PA 7 H PCA 5!>DILIGHK: 9A 7HG8BFK
I B @9G C H: 9K @9 D97 ÷ 9B2
8 A 9BGC B9B F9 B
A @A 9HGFGB7 < 9G
H: @9F5B7 9G 5F9
897 A 5 @ : 5 B: #9G
" L: ± 5" OSQ" & *
" LL: ± 5% OSQ Q
" LLL: ± 5% OS8SQ

samtec

) & S D5F 7 95GH6 @ 82B 9K 5 @65BM B (+) % S
D<C B9 : 9B2 - ((1+) 5L :) % & () S (+
YIA UJ: 9B2-4 GSA H7 WLa VEXY.)) & S

89G7 F 9H B:
GA 5 GF 5 ÷ < H K F C I ; < < C @ > 5 7 ? !) S C < A

8K : " BC "

GA 5!>DILIGHK %

6M F A I G9F \$ % # & \$ \$, G< 99H % C : %

TABLE 1: MATERIAL			
SAMTEC PART NUMBER	ITEM	MATERIAL	PLATING - (REFERENCE)
SMA-J-P-X-ST-TH1-SHL	SHELL	BRASS C3604B	0.00013[.000005] GOLD OVER .00127[.000050] NICKEL
SMA-J-P-X-ST-TH1-INS	INSULATOR	PTFE TEFLON (WHITE)	N/A
SMA-SKT-003	SOCKET	BeCu C17300	0.00076[.000030] GOLD OVER .00127[.000050] NICKEL
SMA-J-P-X-ST-TH1-RNG	RING	BRASS C3604B	0.00013[.000005] GOLD OVER .00127[.000050] NICKEL

A5HF5 @
G99H56 @ %

8C BCHG7 5 @ 9 BFK B:

G< 99H7 5 @ 9 (%