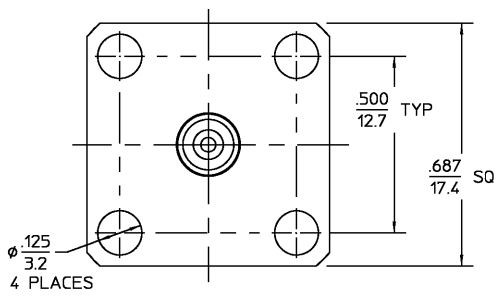


DESIGNED FOR USE WITH	RG-405/U CABLE
CABLE ENTRY DIAMETER MINIMUM	020
HOUSING	.089 (2.26)
CONTACT	.023 (0.58)

REV	DESCRIPTION	DATE	APPROVED
020	REVISED; ECN 97-0063-1	3/16/97	[Signature]



NOTES:  
1. CAPTURED CENTER CONTACT

ELECTRICAL	MECHANICAL	ENVIRONMENTAL
Nominal Impedance (Ohms) 50	Interface Dimensions MIL-STD-348A, Fig. 313.2	Temperature Rating -65°C to +105°C
Frequency Range (GHz) DC to 15	Recommended Mating Torque N/A	Vibration MIL-STD-202, Method 204, Condition B.
Volt Rating (VRMS MAX) Sea Level 335	Mating Characteristics:	Shock MIL-STD-202, Method 213, Condition I.
VSWR 1.35 MAX	Insertion (MAX Lbs) 2.0	Thermal Shock MIL-STD-202, Method 107, Condition B
Insertion Loss (dB MAX) .06 √(f/GHz)	Withdrawal (MIN Oz) 2.0	Except High Temp Shall Be +115°
RF Leakage (dB MIN) -90 @ 2-3GHz	Force to Engage and Disengage (In-Lbs MAX) 2.0	Moisture Resistance MIL-STD-202, Method 106, and MIL-C-39012
Corona, 70,000 Ft (VRMS MIN) 250	Center Contact Captivation	Corrosion - MIL-STD-202, Method 101, Condition B, 5% salt spray
Dielectric Withstanding Voltage (VRMS MIN) Sea Level 1,000	Axial (Lbs) 6.0	
Contact Resistance (Milliohms MAX)	Radial (In-Oz) N/A	
Center Contact 15	Cable Retention	
Outer Contact 0.2	Axial Force (Lbs MIN) 30.0	
Cable to Housing 0.5	Torque (In-Oz) N/A 16.0	
RF High Potential Sea Level (VRMS MIN) 5 MHz 670	Weight (Grams) TBD	
IR (Megohms MIN) 5,000		

COMPONENT	MATERIAL	FINISH
HOUSING	STAINLESS STEEL PER ASTM-A484 AND ASTM-A582, TYPE 303	GOLD PLATE PER MIL-G-45204
DIELECTRIC	TFE FLUOROCARBON PER ASTM-D-1457	N/A
CENTER CONTACT	BERYLLIUM COPPER PER ASTM-B-196 OR ASTM-B-197, ALLOY C17300, CONDITION H	GOLD PLATE PER MIL-G-45204
PIN CONTACT	BRASS PER ASTM-B-16, HALF HARD	GOLD PLATE PER MIL-G-45204

UNLESS OTHERWISE SPECIFIED DIMENSIONS ARE IN INCHES	DRAWN BY [Signature]	DATE 12/20/96	AMP Incorporated 140 Fourth Avenue Waltham, MA 02451-7599
TOLERANCE ON	CHECKED BY [Signature]	3/7/97	
FRAC. DEC. ANGLES ± 1/64 ±.005 ± °	APPROVED BY [Signature]		
USE ASSY PROCEDURE		TITLE "TNC" 4 HOLE FLANGE MOUNT CABLE JACK DIRECT SOLDER	
408-04747 NO. AP. (31-156)		SIZE B	CODE IDENT NO. 26805
		SCALE 4 : 1	3106-5074-00
			REV 020
			SHEET 1 OF 1

.XXX = in  
XX.X = mm (REF)

CUSTOMER DRAWING

AMP PART # 1085791-1  
SHEET 1 OF 1 REV A