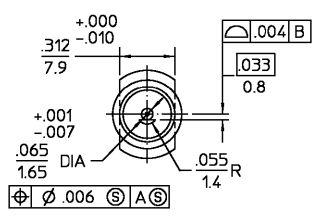


REVISIONS			
REV	DESCRIPTION	DATE	APPROVED
04	DELETED 45°, ADDED .020±.010 X 45° CHF PER ECN 90-0987-2	BME 10/22/90	KCH
05	ELECTRICAL- FREQ RANGE WAS D.C. TO 18.0, VSWR WAS 1:15 MAX, MECHANICAL- INTERFACE DIM WAS PER MIL-STD 348 PER ECN 91-0357-1 (1 OF 2)	TMD 5-5-91	EPH 5-16-91
06	REVISED PER ECN 97-0028-1	2/14/97	S. Moody



NOTES:
1. CAPTURED CENTER CONTACT.

ELECTRICAL	MECHANICAL	ENVIRONMENTAL	HOUSING	MATERIAL	FINISH																										
Nominal Impedance (Ohms) 50 Frequency Range (GHz) 6.0 TO 18.0 Volt Rating (VRMS MAX) 335 VSWR 1:10:1 MAX Insertion Loss (dB MAX) 0.3 RF Leakage -90-(f/GHz)db MAX Carana, 70,000 Ft (VRMS MIN) 150 Dielectric Withstanding Voltage (VRMS MIN) 1000 Contact Resistance (Milliohms MAX) Center Contact 3.0 Outer Contact 2.0 RF High Potential (VRMS MIN @ 5 MHz) 670 IR.(Megohms) 5000	Interface Dimensions MIL-STD-348A FIG 310-2 Recommended Mating Torque N/A Mating Characteristics: Insertion (MAX Lbs) 3.0 Withdrawal (MIN Oz) 1.0 Connector Engagement and Disengagement (In/Lbs MAX) 2.0 Center Contact Captivation Axial 6.0 Lbs Radial 4.0 In-Oz Cable Retention Axial Force N/A Torque N/A Weight (Grams) 13.6	Temperature Rating -65° To 105°C Thermal shock MIL-STD-202, Method 107 Test Condition A Moisture Resistance - MIL-STD-202, Method 106 Corrosion - MIL-STD-202, Method 101, Condition B, 5% salt spray .XXX = in XX.X = mm (REF)	STAINLESS STEEL PER ASTM-A484 AND ASTM-A582, TYPE 303 TFE FLUOROCARBON PER ASTM-D-1457 BERYLLIUM COPPER PER ASTM-B-196 OR ASTM-B-197, ALLOY C17300, CONDITION H	GOLD PLATE PER MIL-G-45204 N/A GOLD PLATE PER MIL-G-45204																											
<table border="1"> <tr> <td>UNLESS OTHERWISE SPECIFIED DIMENSIONS ARE IN INCHES</td> <td>DRAWN BY M.YUEN 6/22/87</td> <td rowspan="3"> </td> <td colspan="2">AMP Incorporated 140 Fourth Avenue Waltham, MA 02451-7599</td> </tr> <tr> <td>TOLERANCE ON</td> <td>CHECKED BY MCD 8/23/88</td> <td colspan="2">TITLE OSM BULKHEAD FEEDTRHU JACK RECEPTACLE STRAIGHT TERMINAL</td> </tr> <tr> <td>FRAC. DEC. ANGLES ± 1/64 ±.005 ± .1°</td> <td>APPD BY MCD 8/23/88</td> <td>SIZE B</td> <td>CODE IDENT NO. 26805</td> <td>2058-5486-00</td> </tr> <tr> <td colspan="3">USE ASSY PROCEDURE</td> <td>NO. AP. N/A</td> <td>SCALE 2:1</td> <td>REV 06</td> </tr> <tr> <td colspan="3">These drawings and specifications are the property of M/A-COM Incorporated and shall not be reproduced or copied or used in whole or in part as the base for the manufacture or sale of items without written permission.</td> <td colspan="3">SHEET 1 OF 1</td> </tr> </table>			UNLESS OTHERWISE SPECIFIED DIMENSIONS ARE IN INCHES	DRAWN BY M.YUEN 6/22/87		AMP Incorporated 140 Fourth Avenue Waltham, MA 02451-7599		TOLERANCE ON	CHECKED BY MCD 8/23/88	TITLE OSM BULKHEAD FEEDTRHU JACK RECEPTACLE STRAIGHT TERMINAL		FRAC. DEC. ANGLES ± 1/64 ±.005 ± .1°	APPD BY MCD 8/23/88	SIZE B	CODE IDENT NO. 26805	2058-5486-00	USE ASSY PROCEDURE			NO. AP. N/A	SCALE 2:1	REV 06	These drawings and specifications are the property of M/A-COM Incorporated and shall not be reproduced or copied or used in whole or in part as the base for the manufacture or sale of items without written permission.			SHEET 1 OF 1			<p>CUSTOMER DRAWING AMP PART # 1044457-1 SHEET 1 OF 1 REV A</p>		
UNLESS OTHERWISE SPECIFIED DIMENSIONS ARE IN INCHES	DRAWN BY M.YUEN 6/22/87		AMP Incorporated 140 Fourth Avenue Waltham, MA 02451-7599																												
TOLERANCE ON	CHECKED BY MCD 8/23/88		TITLE OSM BULKHEAD FEEDTRHU JACK RECEPTACLE STRAIGHT TERMINAL																												
FRAC. DEC. ANGLES ± 1/64 ±.005 ± .1°	APPD BY MCD 8/23/88		SIZE B	CODE IDENT NO. 26805	2058-5486-00																										
USE ASSY PROCEDURE			NO. AP. N/A	SCALE 2:1	REV 06																										
These drawings and specifications are the property of M/A-COM Incorporated and shall not be reproduced or copied or used in whole or in part as the base for the manufacture or sale of items without written permission.			SHEET 1 OF 1																												