

4

3

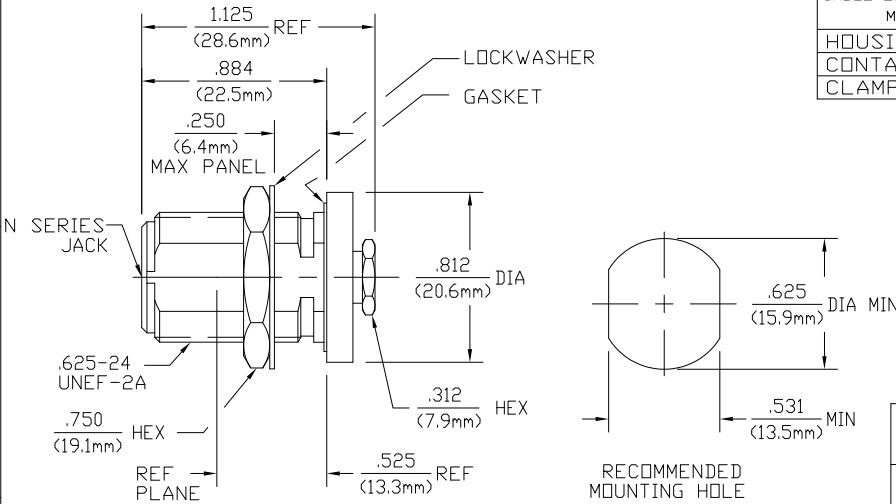
2

1

THIS DRAWING IS UNPUBLISHED. RELEASED FOR PUBLICATION
 © COPYRIGHT BY TYCO ELECTRONICS CORPORATION. ALL RIGHTS RESERVED.

LOC	DIST	REVISIONS			
P	LTR	DESCRIPTION	DATE	MIN	APD
B		REV PER ECO 07-027471	1/16/2008	DW	JL

CABLE ENTRY DIAMETER MINIMUM	
HOUSING	.066
CONTACT	.023
CLAMP NUT	.112



DESIGNED FOR USE WITH RG 174/U,
179, 187, 188, 316 CABLE

COMPONENT	MATERIAL	FINISH
HOUSING MOUNTING NUT CLAMP NUT	BRASS PER ASTM-B-16, HALF HARD	NICKEL PLATE PER QQ-N-290
DIELECTRIC	TFE FLUOROCARBON PER ASTM-D-1457	N/A
CENTER CONTACT	BERYLLIUM COPPER PER ASTM B 196, ALLOY C17300, CONDITION H	GOLD PLATE PER MIL-G-45204
LOCKWASHER	PHOSPHOR BRONZE PER QQ-B-750, GRADE B2 OR TIN BRASS PER ASTM-B-591	NICKEL PLATE PER QQ-N-290
COLLAR	BRASS PER ASTM-B-16, HALF HARD	GOLD PLATE PER MIL-G-45204
GASKET	SILICONE RUBBER PER ZZ-R-765	N/A

ELECTRICAL	MECHANICAL	ENVIRONMENTAL
Nominal Impedance (Ohms) 50	Interface Dimensions MIL-STD-348A, Fig. 304.2	TEMPERATURE RATING -65°C TO +125°C
Frequency Range (GHz) DC to 11	Recommended Mating Torque N/A	Vibration MIL-STD-202, Method 204, Condition B
Volt Rating (VRMS MAX) @ Sea Level 250	Mating Characteristics: Insertion (MAX Lbs) 2.0 Withdrawal (MIN Oz) 2.0	Shock MIL-STD-202, Method 213, Condition I
VSWR 1.20+0.25F(GHz)	Force to Engage and Disengage (In-Lbs MAX) 6.0	Thermal Shock MIL-STD-202, Method 107, Condition B, EXCEPT HIGH TEMP 115°C
Insertion Loss (dB MAX) .10 √F(GHz)	Center Contact Captivation Axial (Lbs) 6.0 Radial (In-Oz) 4.0	Moisture Resistance MIL-STD-202, Method 106
RF Leakage (dB MIN) -[60-F(GHz)]	Cable Retention Axial Force (Lbs) 20 MIN Torque (In-Oz) N/A	Corrosion - MIL-STD-202, Method 101, Condition B, 5% salt spray
Corona, 70,000 Ft (VRMS MIN) 190	Weight (Grams) TBD	
Dielectric Withstanding Voltage (VRMS MIN) @ Sea Level 750		
Contact Resistance (Milliohms MAX) Center Contact 1.5 Outer Contact 2.0		
Cable to Housing 0.5		
RF High Potential @ Sea Level (VRMS MIN @ 5 MHz) 500		
I.R.(Megohms MIN) 5000		

1057140-1
PART NUMBER

DIMENSIONS:		OTHER DIMENSIONS:		APPROVALS:		CUSTOMER DRAWING	
INCHES	MILLIMETERS	INCHES	MILLIMETERS	DATE	BY	DATE	BY
0 PLC	0	0 PLC	0	10FEB04	C. MICHAEL	10FEB04	C. MICHAEL
1 PLC	1	1 PLC	1				
2 PLC	2	2 PLC	2				
3 PLC	3	3 PLC	3				
4 PLC	4	4 PLC	4				
ANGLES	°	ANGLES	°				
FINISH		FINISH					

AMP 1471-9 REV 31MM2000

1057140

A