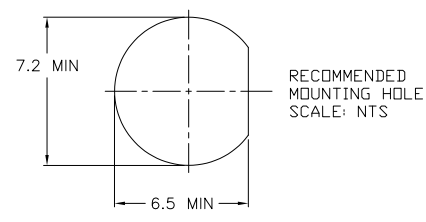
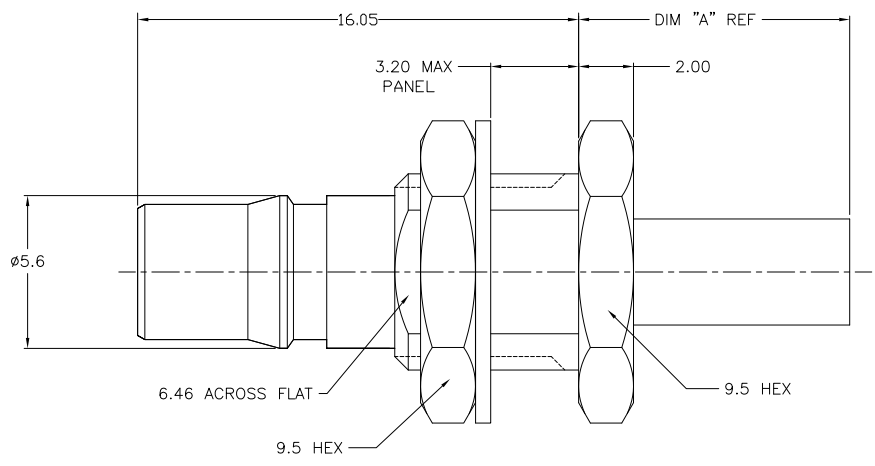
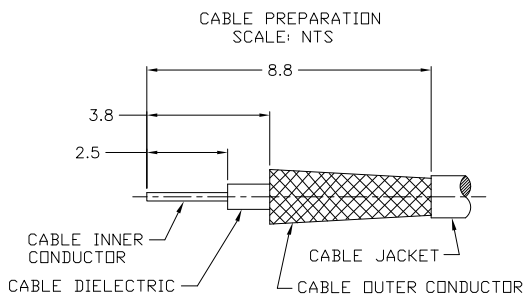


THIS DRAWING IS UNPUBLISHED. RELEASED FOR PUBLICATION.
 © COPYRIGHT BY TYCO ELECTRONICS CORPORATION. ALL RIGHTS RESERVED.

LOC	DIST	REVISIONS			
F	LNK	DESCRIPTION	DATE	BY	APPD
	C2	REVISED PER ECO-08-000700	2/5/2008	DW	BW
	C3	REVISED PER ECO-09-024927	07NOV09	KK	AEG

1. CRIMP FERRULE USING CRIMP DIE HEX SIZE SPECIFIED IN TABLE.
2. SINGLE PACKED
3. BULK PACKED IN QUANTITIES OF 100
4. ASSEMBLE USING INSTRUCTION SHEET IS 408-8817
5. OBSOLETE PARTS: OBSOLETE CIS STREAMLINING PER D.RENAUD/D.SINISI



QTY	PKT	DIM A	HEX	CABLE	MTG NUT	WASHER	CONTACT	FERRULE	HSG ASSY	PART NO.
3	12.2	5.41	RG58/U, 141, 303 & SF142	8-1403077-0	5-1403080-8	1408411-8	9-446556-2	1408408-2	1408339-8	
2	12.2	5.41	RG58/U, 141, 303 & SF142	8-1403077-0	5-1403080-8	1408411-8	9-446556-2	1408408-2	1408339-7	
3	12.2	5.41	RG55/U, 142, 223 & 400	8-1403077-0	5-1403080-8	1408411-8	2-1403102-5	1408408-2	1408339-6	
2	12.2	5.41	RG55/U, 142, 223 & 400	8-1403077-0	5-1403080-8	1408411-8	2-1403102-5	1408408-2	1408339-5	
3	9.9	3.83	RD316/U	8-1403077-0	5-1403080-8	1408411-4	2-413889-7	1408408-1	1408339-4	
2	9.9	3.83	RD316/U	8-1403077-0	5-1403080-8	1408411-4	2-413889-7	1408408-1	1408339-3	
3	9.9	3.25	RG316/U, 174 & 188	8-1403077-0	5-1403080-8	1408411-4	2-413889-4	1408408-1	1408339-2	
2	9.9	3.25	RG316/U, 174 & 188	8-1403077-0	5-1403080-8	1408411-4	2-413889-4	1408408-1	1408339-1	

CENTER CONTACT	BERYLLIUM COPPER	GOLD
HOUSING NUT	BRASS	NICKEL
FERRULE	COPPER OR BRASS	NICKEL
WASHER	BRONZE	NICKEL
DIELECTRIC	PTFE	N/A
COMPONENT	MATERIAL	FINISH

THIS DRAWING IS A CONTROLLED DOCUMENT. DW 25SEP2002

Doc ID: 4/15/03
 Doc ID: 4/15/03

TYCO Electronics
 Tyco Electronics Corporation
 Harrisburg, PA 17105-3608

QMA STRAIGHT CABLE JACK
 CRIMP ATTACHMENT

108-2087

SIZE: A2 CASE CODE: C=1408339
 CUSTOMER DRAWING SCALE: 10:1 SHEET: 1 of 1 REV: C3

AMP 1471-9 REV 31MM2000