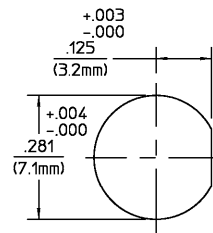


REVISIONS			
REV	DESCRIPTION	DATE	APPROVED
01	REVISED PER ECN 95-0183-1	4/28/95	<i>MJA</i>



RECOMMENDED MOUNTING HOLE

ELECTRICAL	MECHANICAL	ENVIRONMENTAL
Nominal Impedance (Ohms) 50	Interface Dimensions MIL-STD-348A, Fig. 310.2	Temperature Rating -65°C to +105°C
Frequency Range (GHz) Not Rated	Recommended Mating Torque 7-10 in-lbs	Vibration MIL-STD-1344, Method 2005, Condition IV.
Volt Rating (VRMS MAX) Sea Level 335	Mating Characteristics: Insertion (MAX Lbs) 3.0	Shock MIL-STD-1344, Method 2004, Condition G.
VSWR N/A	Withdrawal (MIN Oz) 1.0	Thermal Shock MIL-STD-1344, Method 1003, Condition A.
Insertion Loss (dB MAX) N/A	Force to Engage and Disengage (in-Lbs MAX) 2.0	Except High Temp +85°C.
RF Leakage (dB MIN) N/A	Center Contact Captivation Axial (Lbs MIN) 6.0	Humidity MIL-STD-1344, Method 1002, Type II
Corona, 70,000 Ft (VRMS MIN) 250	Radial (in-Oz MIN) 4.0	Corrosion - MIL-STD-1344, Method 1001, Condition B
Dielectric Withstanding Voltage (VRMS MIN) Sea Level 1,000	Cable Retention Axial Force (Lbs) N/A	
Contact Resistance (Milliohms MAX) Center Contact 3.0	Torque (in-Oz) N/A	
Outer Contact 2.0	Weight (Grams) TBD	
Cable to Housing N/A		
RF High Potential Sea Level (VRMS MIN @ 5 MHz) 670		
IR (Megohms MIN) 5,000		

COMPONENT	MATERIAL	FINISH
HOUSING MOUNTING NUT LOCKWASHER	STAINLESS STEEL PER ASTM-A484 AND ASTM-A582, TYPE 303	PASSIVATE PER ASTM-A380
DIELECTRIC	TFE FLUOROCARBON PER ASTM-D-1457	N/A
CENTER CONTACT	BERYLLIUM COPPER PER ASTM B 196, ALLOY C17300, CONDITION H	GOLD PLATE PER MIL-G-45204 OVER COPPER PLATE PER MIL-C-14550
*O* - RING	SILICONE RUBBER PER ZZ-R-765	N/A

UNLESS OTHERWISE SPECIFIED DIMENSIONS ARE IN INCHES TOLERANCE ON	DRAWN BY <i>MJA</i> DATE 12/1/92	AMP Incorporated
FRAC. DEC. ANGLES ± 1/64 ±.005 ± °	CHECKED BY <i>AKM</i> DATE 12/3/92	140 Fourth Avenue Waltham, MA 02451-7599
These drawings and specifications are the property of AMP Incorporated and shall not be reproduced or copied or used in whole or in part on the basis of the manufacture or sale of item(s) without written permission.	USE ASSY PROCEDURE	<b>AMP</b>
	NO. AP. N/A	TITLE OSM BULKHEAD FEEDTHRU JACK RECEPTACLE SOLDER PORT TERMINAL
		SIZE B CODE IDENT NO. 2056-8011-92 REV 01
		SCALE 5 : 1 SHEET 1 OF 1

CUSTOMER DRAWING AMP PART # 1053118-1 SHEET 1 OF 1 REV A