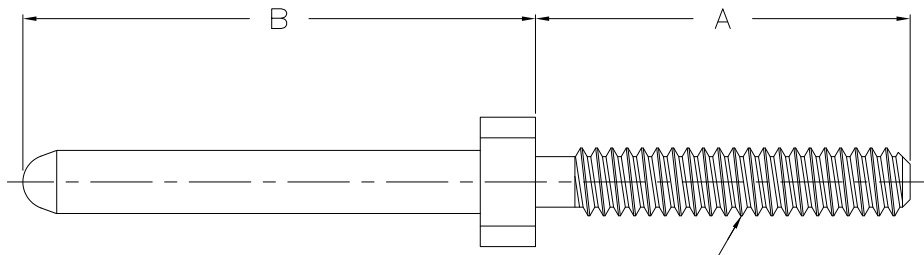
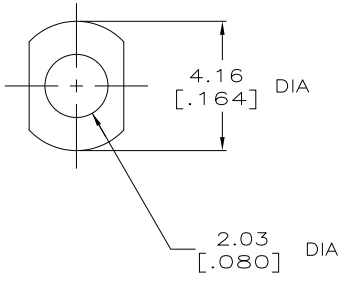


THIS DRAWING IS UNPUBLISHED
 ALL RIGHTS RESERVED

REV	DATE	DESCRIPTION	BY	CHK	APP
AD	00				
R2		REVISED PER EDD-11-004835			



#2-56 UNC-2A THREAD

- △ MATERIAL: BRASS
- △ FINISH: 0.00127-0.00254[.000050-.000100] NICKEL UNDERPLATE ALL OVER; 0.00076-0.00102[.000030-.000040] GOLD PLATE.
- △ FINISH: 0.00254[.000100] MIN COPPER UNDERPLATE ALL OVER; 0.00508-0.00635[.000200-.000250] SILVER PLATE.
- △ FINISH: 0.00127-0.00254[.000050-.000100] NICKEL UNDERPLATE ALL OVER; 0.00127[.000050] GOLD PLATE.
- △ FINISH: 0.00127-0.00254[.000050-.000100] NICKEL UNDERPLATE ALL OVER; 0.00127[.000050] GOLD PLATE.
- △ PART NUMBER IS OBSOLETE.
- △ OBSOLETE PARTS: OBSOLETE CIS STREAMLINING PER D.RENAUD/D.SINISI

△ OBSOLETE

21.59 [.850]	10.67 [.420]	△	2-532828-9
21.59 [.850]	10.67 [.420]	PLAIN	2-532828-8
24.89 [.980]	9.53 [.375]	△	2-532828-7
24.89 [.980]	9.53 [.375]	PLAIN	2-532828-6
21.59 [.850]	8.13 [.320]	△	2-532828-5
21.59 [.850]	8.13 [.320]	PLAIN	2-532828-4
29.21 [1.150]	8.51 [.335]	PLAIN	2-532828-3
△	△	△	2-532828-2
24.89 [.980]	25.40 [1.000]	△	2-532828-1
24.89 [.980]	25.40 [1.000]	PLAIN	2-532828-0
24.89 [.980]	17.14 [.675]	PLAIN	1-532828-9
△	△	△	1-532828-8
△	△	△	1-532828-7
△	△	△	1-532828-6
B	A	FINISH	PART NUMBER

21.59 [.850]	12.06 [.475]	△	1-532828-5
21.59 [.850]	12.06 [.475]	PLAIN	1-532828-4
△	△	△	1-532828-3
△	△	△	1-532828-2
30.35 [1.195]	12.06 [.475]	△	1-532828-1
30.35 [1.195]	12.06 [.475]	PLAIN	1-532828-0
△	△	△	532828-9
26.04 [1.025]	12.06 [.475]	△	532828-8
26.04 [1.025]	12.06 [.475]	PLAIN	532828-7
△	△	△	532828-6
24.89 [.980]	12.06 [.475]	△	532828-5
24.89 [.980]	12.06 [.475]	PLAIN	532828-4
△	△	△	532828-3
29.21 [1.150]	12.06 [.475]	△	532828-2
29.21 [1.150]	12.06 [.475]	PLAIN	532828-1
B	A	FINISH	

THIS DRAWING IS A CONTROLLED DOCUMENT. SEE EDD-11-004835 FOR DETAILS.

TE Connectivity
 HDI, STATIC DISCHARGE, GUIDE PIN

DATE: 11/15/07
 DRAWING NO: A100779
 CUSTOMER DRAWING