

4

3

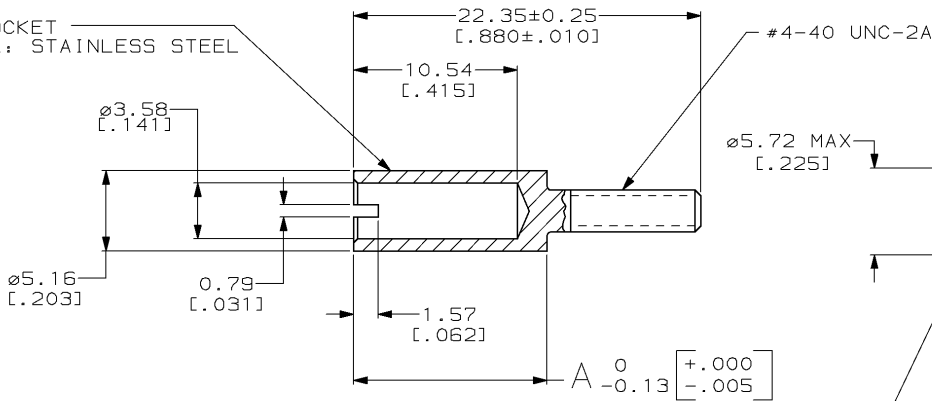
2

1

THIS DRAWING IS UNPUBLISHED. RELEASED FOR PUBLICATION  
 BY AMP INCORPORATED. ALL RIGHTS RESERVED.

REVISONS		DATE	DWN	APVD
BD	36			
P	LTR	DESCRIPTION		
	M	REDRAWN ON CAD W/O CHANGE	15 FEB 96	BC GS
		PER EC 0020-1343-95		

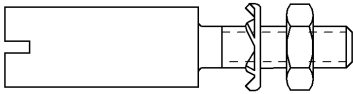
GUIDE SOCKET  
 MATERIAL: STAINLESS STEEL



LOCKWASHER  
 MATERIAL: STAINLESS STEEL  
 FINISH: PASSIVATED

NUT #4-40 UNC-2B  
 x 4.75 [0.187] ACROSS FLATS  
 MATERIAL: CARBON STEEL  
 FINISH: ZINC PLATED

11.94 [.470]	203964-5
12.45 [.490]	203964-1
A	PART NUMBER



ASSEMBLED VIEW

THIS DRAWING IS A CONTROLLED DOCUMENT FOR AMP INCORPORATED. IT IS SUBJECT TO CHANGE AND THE CONTROLLING ENGINEERING ORGANIZATION SHOULD BE CONTACTED FOR THE LATEST REVISION.		DWN B. CARBO 15 FEB 96	AMP Incorporated Harrisburg, PA 17105-3608	
DIMENSIONS: mm (INCHES)		CHK R. STONE 20 FEB 96	NAME G. STEINHAUER	
TOLERANCES UNLESS OTHERWISE SPECIFIED: 0 PLC ±- 1 PLC ±- 2 PLC ±0.38 [0.015] 3 PLC ±- 4 PLC ±- ANGLES ±-		APVD G. STEINHAUER 17 APR 96	PRODUCT SPEC APPLICATION SPEC WEIGHT -	
MATERIAL SEE CALLOUTS		FINISH SEE CALLOUTS	SIZE A3	CAGE CODE 00779
			DRAWING NO C-203964	
			SCALE 4:1	SHEET 1 OF 1
				REV M
CUSTOMER DRAWING				

AMP 1470-15 REV 09MAY94

15-FEB-96 10:47:28 omp40973 /home/ssrv026d/dsk01/dept4023/amp40973/ednmod