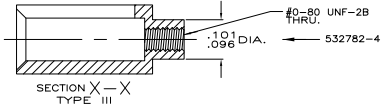
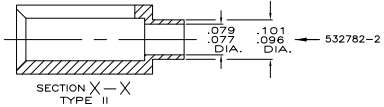
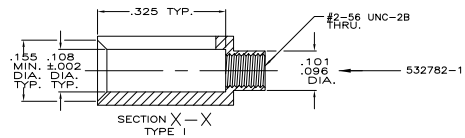
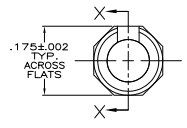
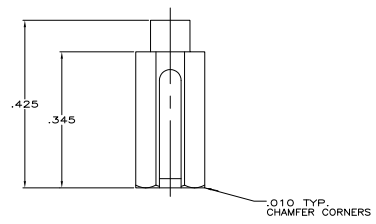


THIS DRAWING IS UNPUBLISHED. REPRODUCED FOR INFORMATION.
 © 1985 BY TSS ELECTRONICS CORPORATION. ALL RIGHTS RESERVED.

REV	DATE	DESCRIPTION	BY	CHK	APP
AD 25					
G		REVISED PER EC 0513-0387-05			1005205 LDF/JMS

- △ KIT CONSISTS OF (1) 532782-1 INSERT AND (1) 6-21082-9 SCREW (#2-56 X .125 LONG.)
- △ TO BE USED WITH PART NUMBER 531713-1.
- 3. MOUNT WITH .125 LONG #2-56 SCREW.



REVISION	REASON	DATE	BY	CHK	APP
-	III				532782-4
OBSOLETE	△	I			532782-3
OBSOLETE	△	II			532782-2
-	I				532782-1

THIS DRAWING IS A CONTROLLED DOCUMENT. TSS ELECTRONICS CORPORATION, Harrisburg, PA 17105-3608

KEYING, INSERT COMBINATION GUIDE

DATE: 00779 G=532782

CUSTOMER DRAWING