

| | | | |
|-----------|-----|-------------------------------------|----------|
| 4 | 3 | 2 | 1 |
| REVISIONS | | | |
| EC | REV | DESCRIPTION | DATE |
| — | A | NEW RELEASE, PREVIOUSLY CUD 399-017 | 02/25/06 |

This drawing involves proprietary design rights of Tyco Electronics Corporation, and all design, manufacture, reproduction, use and sale rights regarding the same are expressly reserved. It is submitted for a specific purpose and the recipient by accepting this drawing, assumes custody and control and agrees to take reasonable precautions: (a) that this drawing will not be copied and reproduced, in whole or in part, or its contents, revealed in any manner, or in any form, except in most the purpose for which it was delivered and (b) that any special features peculiar to this design will not be incorporated in other projects without the expressed written permission of Tyco Electronics Corporation.

5. ITEMS PROVIDED TO THIS SPECIFICATION TO BE PERMANENTLY IDENTIFIED PER THE FOLLOWING IDENTIFIER:

| | | |
|------------------|-----------------------|---|
| TYCO PART NUMBER | DATE CODE (e.g. 0625) | YEAR <input type="text"/> WEEK <input type="text"/> |
| XXXXXXX-X | XXXX | |

4. ALL DIMENSIONS SHOWN ACROSS A CENTERLINE (⌀) SHALL BE CENTRALIZED WITHIN THE TOLERANCE INDICATED FOR THAT DIMENSION.

3. FINISHES:
 CROWN HOLDER: GOLD PLATED, .000030 MIN THICK WITH OVERALL GOLD FLASH
 OVER NICKEL PLATED, .000040 MIN THICK

2. MATERIALS:
 INSULATOR: THERMOPLASTIC, GLASS REINFORCED, UL94V-0 FLAMMABILITY RATED, COLOR-BLACK
 CROWN HOLDER: COPPER ALLOY
 CROWN BAND: COPPER ALLOY
 MATING BLADE: COPPER ALLOY WITH GOLD OR NICKEL PLATED

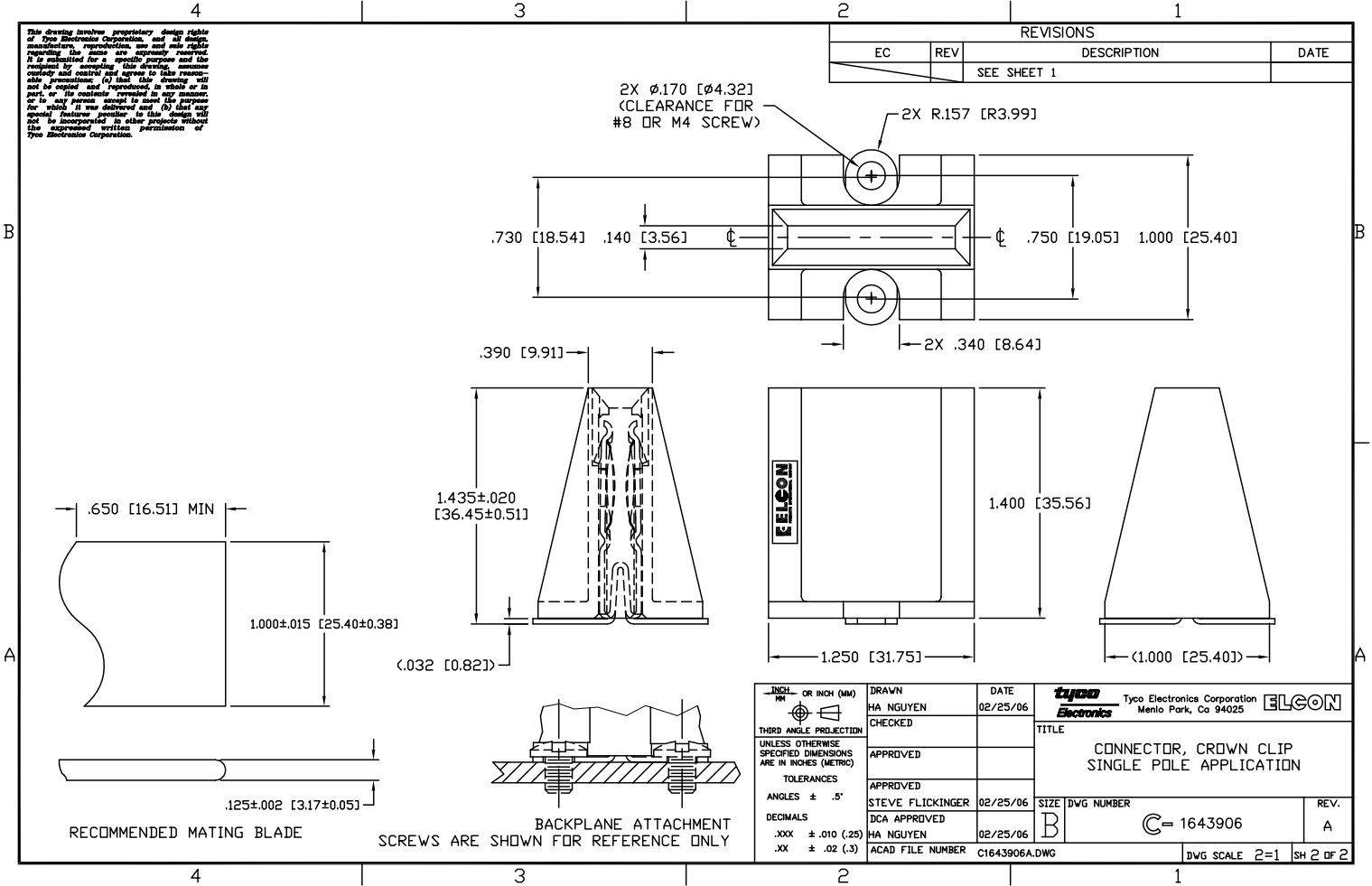
1. PART NUMBER CHANGES AND OR DESIGN CHANGES AFFECTING ITEM INTERCHANGEABILITY REQUIRE PRIOR ELCON APPROVAL AND AUTHORIZATION BY REVISION TO THIS DRAWING.

NOTES: UNLESS OTHERWISE SPECIFIED

| | | | | |
|--|--------------------|------------------|--|-------------|
| INCH OR INCH (MM) | DRAWN HA NGUYEN | DATE 02/25/06 | 1643906-1 | AS SHOWN |
| THIRD ANGLE PROJECTION | CHECKED | | PART NUMBER | DESCRIPTION |
| UNLESS OTHERWISE SPECIFIED DIMENSIONS ARE IN INCHES (METRIC) | APPROVED | | Tyco Electronics Corporation Menlo Park, Ca 94025 | |
| TOLERANCES | APPROVED | | TITLE | |
| ANGLES ± .5° | STEVE FLICKINGER | 02/25/06 | CONNECTOR, CROWN CLIP SINGLE POLE APPLICATION | |
| DECIMALS .XXX ± .010 (.25) | DCA APPROVED | | SIZE DWG NUMBER | REV. |
| .XX ± .02 (.3) | HA NGUYEN | 02/25/06 | B C-1643906 | A |
| | ACAD FILE NUMBER | C1643906A.DWG | DWG SCALE 2=1 | SH 1 OF 2 |

This drawing involves proprietary design rights of Tyco Electronics Corporation and all design, manufacture, reproduction, use and sale rights regarding the same are expressly reserved. It is submitted for a specific purpose and the recipient by accepting this drawing, assumes custody and control and agrees to take reasonable precautions: (a) that this drawing will not be copied and reproduced, in whole or in part, or its contents, revealed in any manner, or in any form, except in most the purpose for which it was delivered and (b) that any special features peculiar to this design will not be incorporated in other projects without the expressed written permission of Tyco Electronics Corporation.

| REVISIONS | | | |
|-----------|-----|-------------|------|
| EC | REV | DESCRIPTION | DATE |
| | | SEE SHEET 1 | |



| | | | |
|--|--|---|--|
| <small>INCH OR INCH (MM)</small> <small>THIRD ANGLE PROJECTION</small> <small>UNLESS OTHERWISE SPECIFIED DIMENSIONS ARE IN INCHES (METRIC)</small> | <small>DRAWN</small> HA NGUYEN <small>CHECKED</small> <small>APPROVED</small> STEVE FLICKINGER <small>DCA APPROVED</small> HA NGUYEN <small>ACAD FILE NUMBER</small> C1643906.DWG | <small>DATE</small> 02/25/06 <small>APPROVED</small> 02/25/06 <small>DATE</small> 02/25/06 <small>ACAD FILE NUMBER</small> C1643906.DWG | Tyco Electronics Corporation Menlo Park, Ca 94025 |
| <small>TITLE</small> CONNECTOR, CROWN CLIP SINGLE POLE APPLICATION | | | <small>REV.</small> A |
| <small>SIZE</small> B <small>DWG NUMBER</small> C-1643906 | | <small>DWG SCALE</small> 2=1 <small>SH</small> 2 OF 2 | |