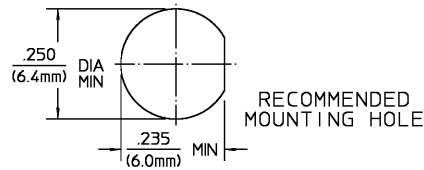


| | |
|-----------------------|---------|
| DESIGNED FOR USE WITH | |
| RG-174/U, RG-188/U | |
| RG-316/U | |
| CABLE ENTRY DIAMETER | MINIMUM |
| FERRULE | .125 |
| HOUSING | .067 |
| CONTACT | .023 |

| REVISIONS | | | |
|-----------------|-------------|----------|-----------|
| REV | DESCRIPTION | DATE | APPROVED |
| 02 ₀ | REVISED | 10/31/96 | IC 3/4/96 |



| ELECTRICAL | MECHANICAL | ENVIRONMENTAL |
|--|--|---|
| Nominal Impedance (Ohms) 50 | Interface Dimensions MIL-STD-348A, Fig. 310.2 | Temperature Rating -65°C to +165°C |
| Frequency Range (GHz) DC to 12.4 | Recommended Mating Torque N/A | Vibration MIL-STD-202, Method 204, Condition D |
| Volt Rating (VRMS MAX) Sea Level 250 | Mating Characteristics: | Shock MIL-STD-202, Method 213, Condition 1 |
| VSWR 1.30 : 1 | Insertion (MAX lbs) 3.0 | Thermal Shock MIL-STD-202, Method 107, Condition B, Except High Temp shall be +85°C |
| Insertion Loss (dB MAX) .06 √(GHz) | Withdrawal (MIN oz) 1.0 | Moisture Resistance MIL-STD-202, Method 106 |
| RF Leakage (dB MIN) -(60-(GHz)) | Force to Engage and Disengage (in-lbs MAX) 2.0 | Corrosion - MIL-STD-202, Method 101, Condition B, 5% salt spray |
| Corona, 70,000 Ft (VRMS MIN) 190 | Center Contact Captivation | |
| Dielectric Withstanding Voltage (VRMS MIN) Sea Level 750 | Axial (lbs) 6.0 | |
| Contact Resistance (Milliohms MAX) | Radial (in-oz) N/A | |
| Center Contact 2.0 | Cable Retention | |
| Outer Contact 2.0 | Axial Force (lbs MIN) 20.0 | |
| Cable to Housing 0.5 | Torque (in-oz MIN) N/A | |
| RF High Potential Sea Level (VRMS MIN) 5 MHz 500 | Weight (Grams) TBD | |
| IR (Megohms MIN) 10,000 | | |

| COMPONENT | MATERIAL | FINISH |
|---------------------------------|--|----------------------------|
| HOUSING MOUNTING NUT LOCKWASHER | STAINLESS STEEL PER ASTM-A484 AND ASTM-A582, TYPE 303 | PASSIVATE PER QQ-P-35 |
| DIELECTRIC | TFE FLUOROCARBON PER ASTM-D-1457 | N/A |
| CENTER CONTACT | BERYLLIUM COPPER PER ASTM B 196, ALLOY C17300, CONDITION H | GOLD PLATE PER MIL-G-45204 |
| FERRULE | COPPER OR BRASS ALLOY ROCKWELL F65 MAXIMUM | NICKEL PLATE PER QQ-N-290 |

| | | |
|--|--------------------|--|
| UNLESS OTHERWISE SPECIFIED DIMENSIONS ARE IN INCHES | DATE 11/16/92 | AMP Incorporated |
| TOLERANCE ON | CHECKED BY | 140 Fourth Avenue |
| FRACTIONAL DECIMAL ANGLES ± 1/64 ± .005 ± ° | APPROVED BY | Waltham, MA 02451-7599 |
| These drawings and specifications are the property of AMP Incorporated and shall not be reproduced or copied or used in whole or in part as the basis for the manufacture or sale of items without written permission. | USE ASSY PROCEDURE | AMP |
| | 408-04661 | TITLE OSM LOW COST BULKHEAD CABLE JACK CRIMP ATTACHMENT |
| | NO. AP. (28-001) | SIZE B CODE IDENT NO. 26805 2834-7388-02 REV 02 ₀ |
| | | SCALE 4 : 1 SHEET 1 OF 1 |

CUSTOMER DRAWING

AMP PART # 1056452-1
SHEET 1 OF 1 REV A