

THIS DRAWING IS UNPUBLISHED. RELEASED FOR PUBLICATION N/A, N/A.

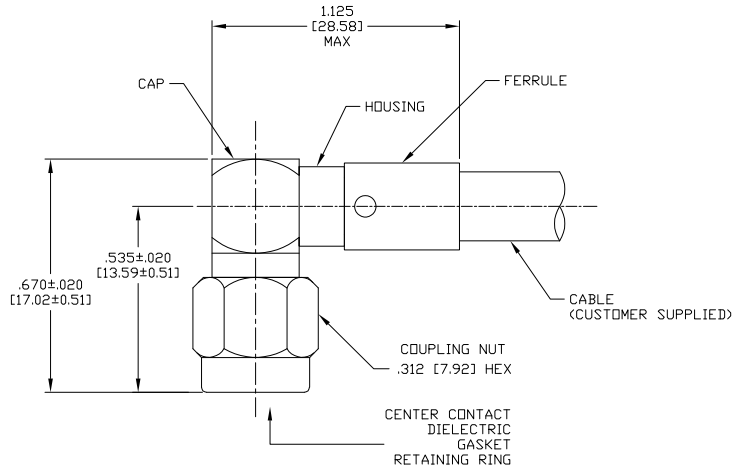
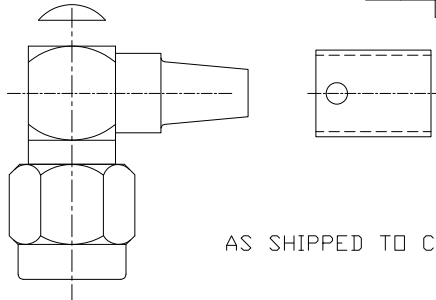
COMPONENT	MATERIAL	FINISH
COUPLING NUT	STAINLESS STEEL PER ASTM-A-484 OR ASTM-A-582 TYPE 303	PASSIVATED PER ASTM-A-380
DIELECTRIC	PTFE FLUOROCARBON PER ASTM-D-1457	-
CENTER CONTACT	BRASS PER ASTM-B-16 HALF HARD	GOLD PLATED PER ASTM-B-488
HOUSING CAP	STAINLESS STEEL PER ASTM-A-484 OR ASTM-A-582 TYPE 303	GOLD PLATED PER ASTM-B-488
GASKET	SILICONE RUBBER PER ZZ-R-765	-
FERRULE	COPPER OR BRASS ALLOY ROCKWELL F65 MAX	GOLD PLATED PER ASTM-B-488
RETAINING RING	BERYLLIUM COPPER PER ASTM-B-194 ALLOY C17200, CONDITION H	-
-	-	-
-	-	-

ENVIRONMENTAL	
TEMPERATURE RATING:	-65°C TO +165°C
VIBRATION:	MIL-STD-202, METHOD 204, CONDITION D
SHOCK:	MIL-STD-202, METHOD 213, CONDITION 1
MOISTURE RESISTANCE:	MIL-STD-202, METHOD 106
CORROSION:	MIL-STD-202, METHOD 101, CONDITION B, 5% SALT SPRAY
THERMAL SHOCK:	MIL-STD-202, METHOD 107, CONDITION B EXCEPT HIGH TEMP 85°C

MECHANICAL	
INTERFACE DIMENSIONS:	MIL-STD-348A FIG. 310.1
RECOMMENDED MATING TORQUE:	7-10 IN-LBS
FORCE TO ENGAGE & DISENGAGE (IN-LBS MAX):	2.0
WEIGHT (GRAMS):	TBD
MATING CHARACTERISTICS:	INSERTION (MAX LBS): N/A WITHDRAWAL (MIN OZ): N/A
CABLE RETENTION:	AXIAL FORCE (LBS): 40 MIN TORQUE (IN-OZ): N/A
CENTER CONTACT CAPTIVATION:	AXIAL (LBS): 6.0 RADIAL (IN-OZ): N/A

ELECTRICAL	
NORMAL IMPEDANCE (OHMS):	50
FREQUENCY RANGE (GHZ):	DC TO 12.4
VOLT RATING @ SEA LEVEL (VRMS MAX):	335
VSWR:	1.15+0.02f(GHZ)
INSERTION LOSS: (dB MAX):	.06 √f(GHZ)
RF LEAKAGE (dB MIN):	-60 @ 2-3 GHz
CORONA 70,000 FT (VRMS MIN):	250
DIELECTRIC WITHSTANDING VOLTAGE (VRMS MIN) AT SEA LEVEL:	1000
I.R. (MEG OHMS MIN):	5,000
RF HIGH POTENTIAL AT SEA LEVEL (VRMS MIN @ 5 MHz):	670
CONTACT RESISTANCE (MILLOHMS MAX):	CENTER CONTACT: 4.0 OUTER CONTACT: 2.0 CABLE TO HOUSING: 0.5

LOC	DIST	REV	DATE	MIN	APD
DF	XO	A	9-7-05	CT	FB



DESIGNED TO USE	
RG-58, RG-142, RG-223	
CABLE ENTRY DIAMETER MIN	
HOUSING:	.120 [3.05]
CONTACT SLOT:	.041 [1.04]
FERRULE:	.216 [5.48]

DIMENSIONS	
INCHES (mm)	
0 PLC	±
1 PLC	±
2 PLC	±
3 PLC	±
4 PLC	±
ANGLE	±
FINISH	

THIS DRAWING IS A CONTROLLED DOCUMENT.	
DRN	J. KAISER 9/24/02
CHK	J. LIPPERT 10-18-02
APP	J. LIPPERT 10-18-02
APPROVAL	
APPLICATION SPEC	408-4931
WEIGHT	TBD
CUSTOMER DRAWING	

1052184-1	
PART NO.	
Tyco Electronics Corporation Harrisburg, Pa 17105-3608	
SMA RIGHT ANGLE CABLE PLUG-SOLDER ATTACHMENT (M39012/56-3109) CAT A	
SIZE	CAGE CODE DRAWING NO
A2	00779
RESTRICTED TO	
CUSTOMER DRAWING	
SCALE	5:1
SHEET	1 of 1
REV	A

AMP 1471-9 REV 31MAR2000

MA/CUM # 2037-8109-92