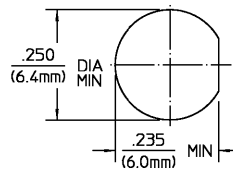


DESIGNED FOR USE WITH RG-142/U (DOUBLE BRAID CABLE) CABLE ENTRY DIAMETER MINIMUM	
FERRULE	.216
HOUSING	.121
CONTACT	.042

REVISIONS			
REV	DESCRIPTION	DATE	APPROVED
01 <sub>0</sub>	RELEASED	12/15/92	<i>D. Comello</i>



RECOMMENDED  
MOUNTING HOLE

ELECTRICAL	MECHANICAL	ENVIRONMENTAL
Nominal Impedance (Ohms) 50	Interface Dimensions MIL-STD-348A, Fig. 310.2	Temperature Rating -65°C to +165°C
Frequency Range (GHz) DC to 12.4	Recommended Mating Torque N/A	Vibration MIL-STD-202, Method 204, Condition D
Volt Rating (VRMS MAX) Sea Level 375	Mating Characteristics:	Shock MIL-STD-202, Method 213, Condition I
VSWR 1.30 : 1	Insertion (MAX lbs) 3.0	Thermal Shock MIL-STD-202, Method 107, Condition B, Except High Temp shall be +85°C
Insertion Loss (dB MAX) .06√(GHz)	Withdrawal (MIN oz) 1.0	Moisture Resistance MIL-STD-202, Method 106
RF Leakage (dB MIN) -(60-√(GHz))	Force to Engage and Disengage (in-lbs MAX) 2.0	Corrosion - MIL-STD-202, Method 101, Condition B, 5% salt spray
Corona, 70,000 Ft (VRMS MIN) 250	Center Contact Captivation	
Dielectric Withstanding Voltage (VRMS MIN) Sea Level 1,000	Axial (lbs) 6.0	
Contact Resistance (Milliohms MAX)	Radial (in-oz) N/A	
Center Contact 2.0	Cable Retention	
Outer Contact 2.0	Axial Force (lbs MIN) 45.0	
Cable to Housing 0.5	Torque (in-oz MIN) N/A	
RF High Potential @ Sea Level (VRMS MIN @ 5 MHz) 670	Weight (Grams) TBD	
IR (Megohms MIN) 10,000		

COMPONENT	MATERIAL	FINISH
HOUSING MOUNTING NUT LOCKWASHER	STAINLESS STEEL PER ASTM-A484 AND ASTM-A582, TYPE 303	PASSIVATE PER ASTM-A380
DIELECTRIC	TFE FLUOROCARBON PER ASTM-D-1457	N/A
CENTER CONTACT	BERYLLIUM COPPER PER ASTM B 196, ALLOY C17300, CONDITION H	GOLD PLATE PER MIL-G-45204 OVER NICKEL PLATE PER QQ-N-290
FERRULE	COPPER OR BRASS ALLOY ROCKWELL F65 MAXIMUM	NICKEL PLATE PER QQ-N-290 OVER COPPER PLATE PER MIL-C-14550

UNLESS OTHERWISE SPECIFIED DIMENSIONS ARE IN INCHES TOLERANCE ON	DRAWN BY <i>ADavis</i> DATE 11/16/92	AMP Incorporated
FRAC. DEC. ANGLES ± 1/64 ± .005 ± °	CHECKED BY <i>D. Comello</i> DATE 12/15/92	140 Fourth Avenue Waltham, MA 02451-7599
These drawings and specifications are the property of Oerli Spectra Incorporated and shall not be reproduced or copied or used in whole or in part as the basis for the manufacture or sale of items without written permission.	USE ASSY PROCEDURE	TITLE OSM LOW COST BULKHEAD CABLE JACK CRIMP ATTACHMENT
	408-04661 NO. AP. (28-001)	SIZE B CODE IDENT. NO. 26805 PART NO. 2834-7341-02 REV 01 <sub>0</sub>
	SCALE 4 : 1	SHEET 1 OF 1

CUSTOMER DRAWING

AMP PART # 1056447-1  
SHEET 1 OF 1 REV A