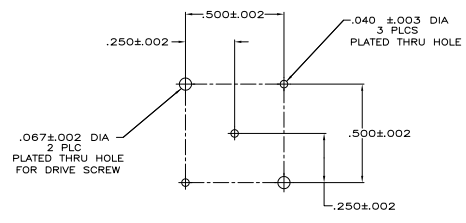
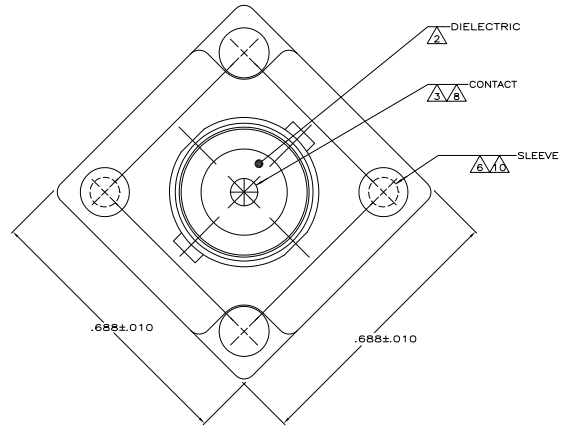


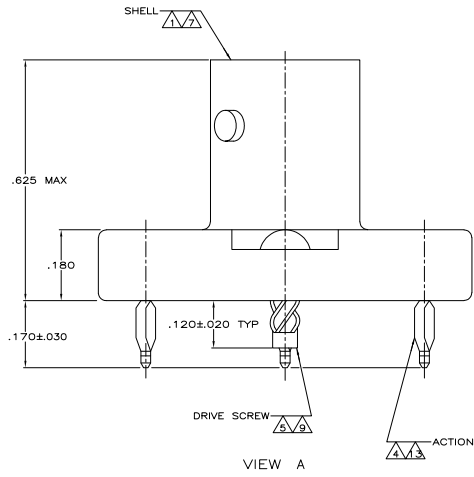
THIS DRAWING IS UNPUBLISHED. RELEASED FOR PURIFICATION. ALL RIGHTS RESERVED.

REV	DATE	DESCRIPTION	BY	CHK	APP
16					
RT		REVISED PER ECO-06-018704			

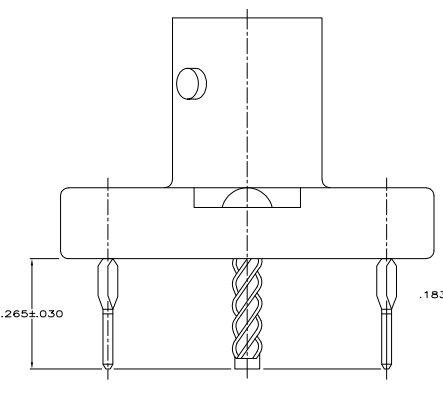


PCB CONFIGURATION  
SCALE 4:1

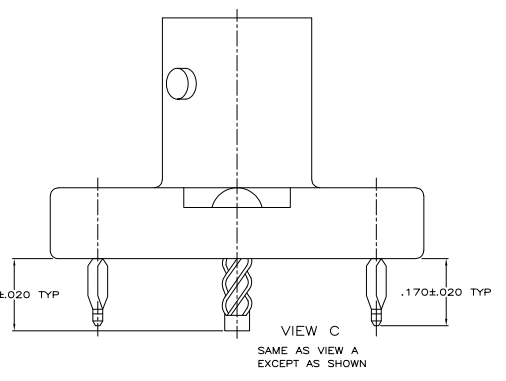
- △ ZINC PER QQ-Z-363
- △ PTFE PER MIL-P-19468
- △ BERYLLIUM COPPER PER QQ-C-530
- △ COPPER NICKEL ALLOY PER ASTM-B-122
- △ STAINLESS STEEL PER ASTM-A-582
- △ BRASS PER QQ-B-626
- △ NICKEL PLATE PER QQ-N-290, .000030 - .000055 MINIMUM THICKNESS
- △ GOLD PLATE PER MIL-G-45204, .000030 - .000055 MINIMUM THICKNESS
- △ PASSIVATE PER QQ-P-35
- △ TIN PLATE PER ASTM-B-545, .000100 - .000200 MINIMUM THICKNESS
- △ PREPARE BOARD AND TERMINATE PER APPLICATION SPEC 114-12001
- 12. SEE INSTRUCTION SHEET 9194.
- △13 GOLD PLATE PER MIL-G-45204.



VIEW A



VIEW B  
SAME AS VIEW A  
EXCEPT AS SHOWN



VIEW C  
SAME AS VIEW A  
EXCEPT AS SHOWN

OBSOLETE	B	221336-4
OBSOLETE	C	221336-3
OBSOLETE	C	221336-2
OBSOLETE	A	221336-1
	VIEW	PART NUMBER

THIS DRAWING IS A CONTROLLED DOCUMENT.

DESIGNED BY	DATE	REVISED BY	DATE
DR. WERNER	7/2/70		
DESIGNED BY	DATE	REVISED BY	DATE
E. RUTH	7/2/70		
DESIGNED BY	DATE	REVISED BY	DATE
R. LENNY	7/2/70		
DESIGNED BY	DATE	REVISED BY	DATE
108-12103			
REVISED BY	DATE	REVISED BY	DATE

THIS DRAWING IS A CONTROLLED DOCUMENT. 100% USE ONLY. DRAWING NO. 221336. REVISED TO: A100779G. DATE: 8/1. BY: 1. REV: R1.

THIS DRAWING IS A CONTROLLED DOCUMENT. 100% USE ONLY. DRAWING NO. 221336. REVISED TO: A100779G. DATE: 8/1. BY: 1. REV: R1.