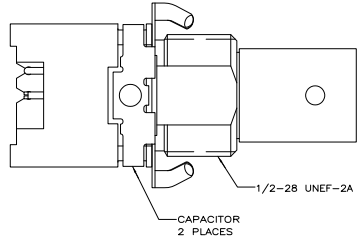
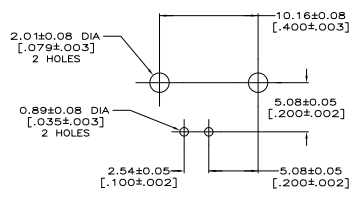
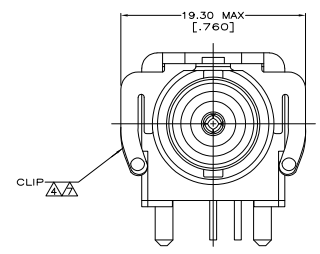
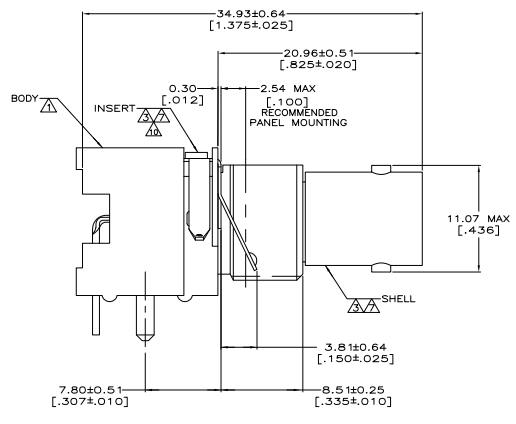
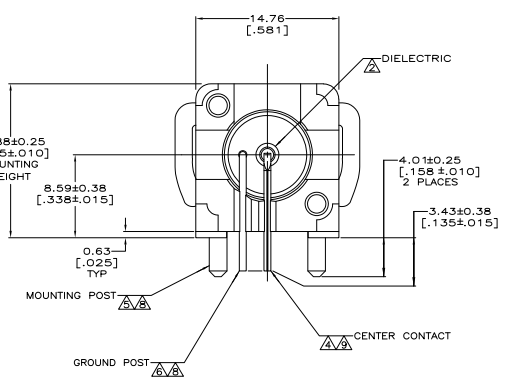


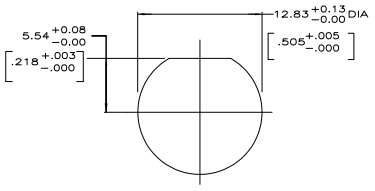
REV	DATE	DESCRIPTION	BY	CHK	APP
AJ	16	REVISION			
A		REVISED FOR EC 0514-0150-05			



- ▲ POLYESTER, PBT, BLACK, PER MIL-M-24519.
- ▲ POLYMETHYLPENTENE GENERAL PURPOSE.
- ▲ ZINC PER QQ-Z-363.
- ▲ PHOSPHOR BRONZE PER QQ-B-750.
- ▲ BRASS PER QQ-B-626.
- ▲ BRASS PER ASTM-B-453.
- ▲ NICKEL PL PER QQ-N-290.
- ▲ TIN PLATE PER ASTM-B-545.
- ▲ SELECTIVELY GOLD PLATED ON INTERFACE AREA PER ASTM-B-488, 0.76 [0.00030] THICK, TIN PLATED ON SOLDER TAIL PER ASTM-B-545, ALL OVER NICKEL PLATE PER QQ-N-290.
- ▲ ESD DEVICE, VOLTAGE BREAKDOWN <3.5KVDC.



PCB CONFIGURATION



RECOMMENDED PANEL CUTOUT

9400 pF, 1500 VDC		5415085-1
CAPACITANCE & VOLTAGE		PART NO
THIS DRAWING IS A CONTROLLED DOCUMENT.		
DESIGNED BY: ALCOBETA - 05002 DRAWN BY: SHREVE - 05002 CHECKED BY: SHREVE - 05002 DATE: 108-1269 REVISION SPEC:	TYPED BY: SHREVE - 05002 DATE: 108-1269 REVISION SPEC:	TYPED BY: SHREVE - 05002 DATE: 108-1269 REVISION SPEC:
SEE NOTES 1 - 6 SEE NOTES 7A-10	CUSTOMER DRAWING	TYPED BY: SHREVE - 05002 DATE: 108-1269 REVISION SPEC: