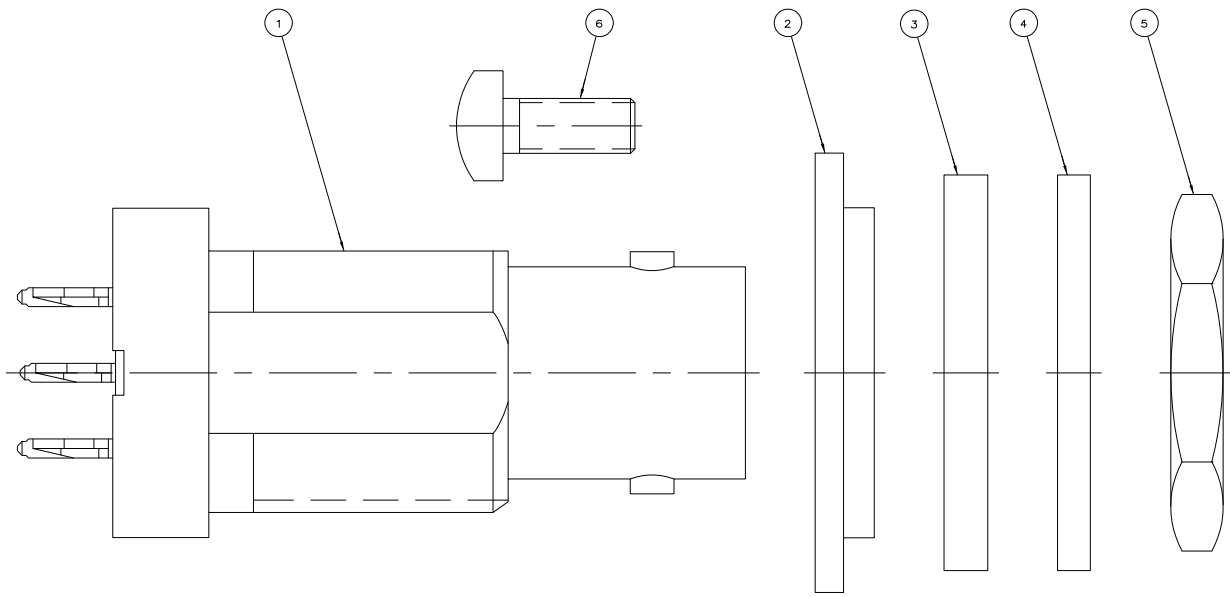


4 3 2 1

THIS DRAWING IS UNPUBLISHED. RELEASED FOR PUBLICATION  
 © COPYRIGHT BY TYCO ELECTRONICS CORPORATION. ALL RIGHTS RESERVED.

LOC	DIST	REVISIONS					
		F	LR	DATE	OWN	APP	
AJ	16	B1		REVISED PER ECO-06-016534	11JUL2006	KS	JL



5019807-3	1-329631-2	414993-1	414986-1	415459-1	415457-2	415456-1
⑥ SCREW QTY=2	⑤ JAM NUT QTY=1	④ WASHER QTY=1	③ WASHER, FLAT QTY=1	② WASHER, STEPPED QTY=1	① JACK ASSEMBLY, ACTION PIN QTY=1	PART NUMBER

THIS DRAWING IS A CONTROLLED DOCUMENT.		DWG MICHAEL E. COPPHER CKD MICHAEL J. TOMCHAK APD MICHAEL J. TOMCHAK PRODUCT SPEC:	<b>tyco</b> <b>Electronics</b> Tyco Electronics Corporation Harrisburg, PA 17105-3608
DIMENSIONS: mm [INCHES] 0 PLG # - 1 PLG # - 2 PLG # - 3 PLG # - 4 PLG # - ANGLES # - MATERIAL - FINISH -	REFERENCE DIMENSIONS: 0 PLG # - 1 PLG # - 2 PLG # - 3 PLG # - 4 PLG # - ANGLES # - MATERIAL - FINISH -	APPLICATION SPEC: - WEIGHT: - CUSTOMER DRAWING	JACK, PRESS FIT, 75 OHM, PCB, BNC SIZE: A2 CASE CODE: 00779 DRAWING NO: C=415456 RESTRICTED TO: - SCALE: 8:1 SHEET: 1 of 1 REV: B1

AMP 1471-9 REV 31MM2000

11JUL2006 12:43pm us026463 \\Us194fp00\data\RF\Prod\_eng\Schrum\Lippert\ECO-06-016534\415456\_1-c.dwg

415456

A