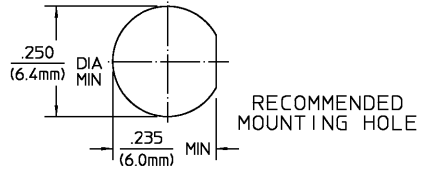


DESIGNED FOR USE WITH RD-316/U (DOUBLE BRAID CABLE) CABLE ENTRY DIAMETER MINIMUM	FERRULE	.137
	HOUSING	.067
	CONTACT	.023

REVISIONS			
REV	DESCRIPTION	DATE	APPROVED
02 ₀	REVISED	10/29/01	ICOM 3/14/96
B	PER EC 0U20-0116-01-02		C. Hoang



ELECTRICAL	MECHANICAL	ENVIRONMENTAL
Nominal Impedance (Ohms) 50	Interface Dimensions MIL-STD-348A, Fig. 310.2	Temperature Rating -65°C to +165°C
Frequency Range (GHz) DC to 12.4	Recommended Mating Torque N/A	Vibration MIL-STD-202, Method 204, Condition D
Volt Rating (VRMS MAX) Sea Level 250	Mating Characteristics:	Shock MIL-STD-202, Method 213, Condition 1
VSWR 1.30 : 1	Insertion (MAX lbs) 3.0	Thermal Shock MIL-STD-202, Method 107, Condition B, Except High Temp shall be +85°C
Insertion Loss (dB MAX) .06 √(f[GHz])	Withdrawal (MIN oz) 1.0	Moisture Resistance MIL-STD-202, Method 106
RF Leakage (dB MIN) -(60-f[GHz])	Force to Engage and Disengage (in-lbs MAX) 2.0	Corrosion - MIL-STD-202, Method 101, Condition B, 5% salt spray
Corona, 70,000 Ft (VRMS MIN) 190	Center Contact Captivation	
Dielectric Withstanding Voltage (VRMS MIN) Sea Level 750	Axial (lbs) 6.0	
Contact Resistance (Milliohms MAX)	Radial (in-oz) N/A	
Center Contact 2.0	Cable Retention	
Outer Contact 2.0	Axial Force (lbs MIN) 25.0	
Cable to Housing 0.5	Torque (in-oz MIN) N/A	
RF High Potential Sea Level (VRMS MIN) 5 MHz 500	Weight (Grams) TBD	
IR (Megohms MIN) 10,000		

COMPONENT	MATERIAL	FINISH
HOUSING MOUNTING NUT LOCKWASHER	STAINLESS STEEL PER ASTM-A484 AND ASTM-A582, TYPE 303	PASSIVATE PER QQ-P-35
DIELECTRIC	TFE FLUOROCARBON PER ASTM-D-1457	N/A
CENTER CONTACT	BRASS PER ASTM-B-16, HALF HARD	GOLD PLATE PER MIL-G-45204
FERRULE	COPPER OR BRASS ALLOY ROCKWELL F65 MAXIMUM	NICKEL PLATE PER QQ-N-290

UNLESS OTHERWISE SPECIFIED DIMENSIONS ARE IN INCHES TOLERANCE ON	DATE 11/16/92	AMP Incorporated
FRAC. DEC. ANGLES ± 1/64 ±.005 ± °	CHECKED BY [Signature]	140 Fourth Avenue Waltham, MA 02451-7599
APPROVED BY [Signature]	12/15/92	
USE ASSY PROCEDURE	408-04661 NO. AP. (28-001)	TITLE OSM LOW COST BULKHEAD CABLE JACK CRIMP ATTACHMENT
		SIZE B CODE IDENT NO. 26805 2834-7316-02 REV 02 ₀
		SCALE 4 : 1 SHEET 1 OF 1

CUSTOMER DRAWING

AMP PART # 1056445-1
SHEET 1 OF 1 REV B