

4

3

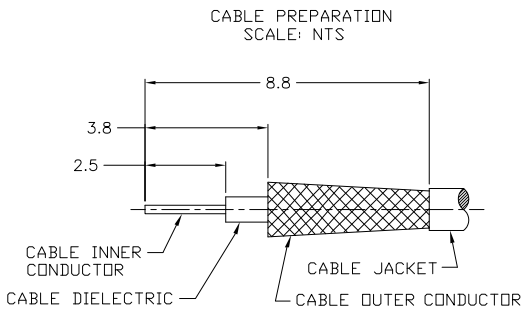
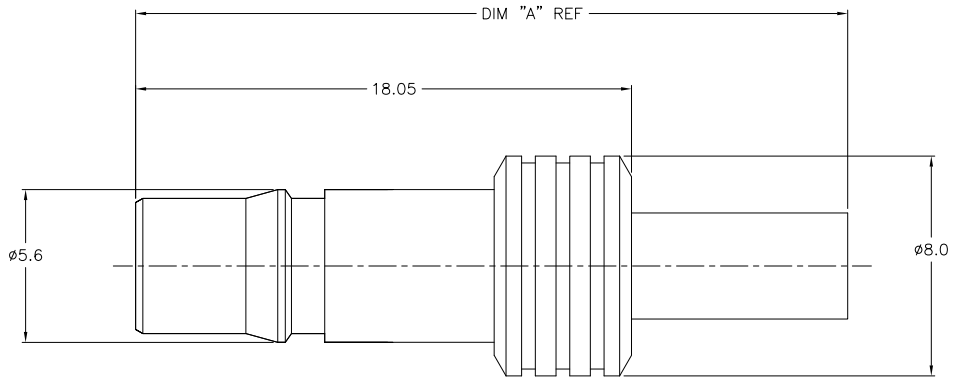
2

1

THIS DRAWING IS UNPUBLISHED. RELEASED FOR PUBLICATION.  
 © COPYRIGHT BY TYCO ELECTRONICS CORPORATION. ALL RIGHTS RESERVED.

REVOLUTIONS		DATE	BY	APP'D
F	LR			
A		2/5/2008	DW	BW
A1		07NOV09	KK	AEG

- 1. CRIMP FERRULE USING CRIMP DIE HEX SIZE SPECIFIED IN TABLE.
- 2. SINGLE PACKED
- 3. BULK PACKED IN QUANTITIES OF 100
- 4. ASSEMBLE TO CABLE USING IS SHEET 408-8900
- 5. OBSOLETE PARTS: OBSOLETE CIS STREAMLINING PER D.RENAUD/D.SINISI



REV	DESCRIPTION	QTY	UNIT	PART NO.	QTY	UNIT	QTY	UNIT	QTY	UNIT
5	OBSOLETE	3	28.2	5.41	RG58/U, 141, 303 & SF142	1408411-8	9-446556-2	1408448-2	<del>1408338-8</del>	
		2	28.2	5.41	RG58/U, 141, 303 & SF142	1408411-8	9-446556-2	1408448-2	1408338-7	
		3	28.2	5.41	RG55/U, 142, 223 & 400	1408411-8	2-1403102-5	1408448-2	<del>1408338-6</del>	
		2	28.2	5.41	RG55/U, 142, 223 & 400	1408411-8	2-1403102-5	1408448-2	<del>1408338-5</del>	
		3	25.9	3.83	RD316/U	1408411-4	2-413889-7	1408448-1	<del>1408338-4</del>	
		2	25.9	3.83	RD316/U	1408411-4	2-413889-7	1408448-1	<del>1408338-3</del>	
		3	25.9	3.25	RG316/U, 174 & 188	1408411-4	2-413889-4	1408448-1	<del>1408338-2</del>	
		2	25.9	3.25	RG316/U, 174 & 188	1408411-4	2-413889-4	1408448-1	1408338-1	
	PACK		DIM A	HEX	CABLE	CONTACT	FERRULE	HSG ASSY	PART NO.	

COMPONENT	MATERIAL	FINISH
CENTER CONTACT	BERYLLIUM COPPER	GOLD
HOUSING	BRASS	NICKEL
FERRULE	COPPER OR BRASS	NICKEL
DIELECTRIC	PTFE	N/A

THIS DRAWING IS A CONTROLLED DOCUMENT. DW 25SEP2002  
 DocId: 108-2087  
 DATE: 2/24/04  
 NAME: Tyco Electronics Corporation  
 Harrisburg, PA 17105-3608  
 QMA STRAIGHT CABLE JACK  
 CRIMP ATTACHMENT  
 SIZE: A2 CASE CODE: 00779 C=1408338  
 RESTRICTED TO: -  
 CUSTOMER DRAWING SCALE: 10:1 SHEET: 1 of 1 REV: A1

AMP 1471-9 REV 31MM0200

1408338

A