

4

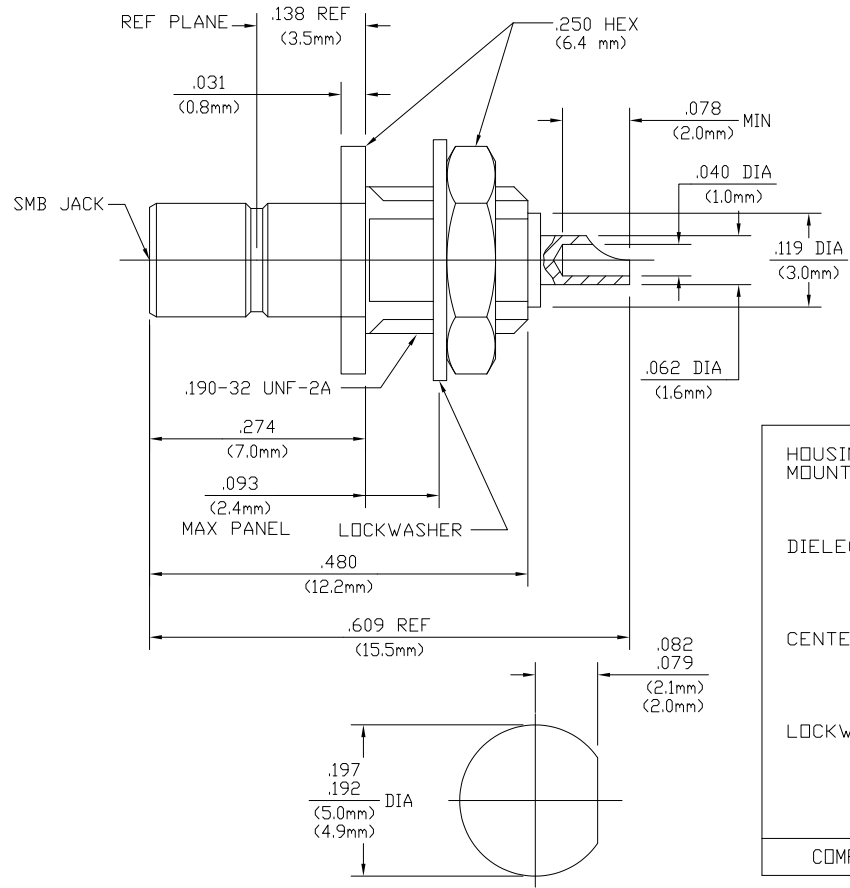
3

2

1

THIS DRAWING IS UNPUBLISHED. RELEASED FOR PUBLICATION
 © COPYRIGHT BY TYCO ELECTRONICS CORPORATION. ALL RIGHTS RESERVED.

LOC	DIST	REVISIONS		
P	LTR	DESCRIPTION	DATE	BY
AJ	00			
B		REV PER EDD 07-027471	1/16/2008	DW JL



1060442-1
 PART NUMBER

COMPONENT	MATERIAL	FINISH
HOUSING MOUNTING NUT	HALF HARD BRASS PER QQ-B-626, COMP 360	GOLD PLATE PER MIL-G-45204 OVER COPPER PLATE PER MIL-C-14550
DIELECTRIC	TFE FLUOROCARBON PER MIL-P-19468 AND FED SPEC L-P-403 AND ASTM-D-1457	N/A
CENTER CONTACT	BERYLLIUM COPPER PER ASTM-B196, ALLOY 173 OR BRASS PER ASTM-B-16	GOLD PLATE PER MIL-G-45204 OVER COPPER PLATE PER MIL-C-14550
LOCKWASHER	PHOSPHOR BRONZE PER QQ-B-750, GRADE 2B OR TIN BRASS PER ASTM-B-591	GOLD PLATE PER MIL-G-45204 OVER COPPER PLATE PER MIL-C-14550

NOTES:
 1. CAPTURED CENTER CONTACT

RECOMMENDED MOUNTING HOLE

THIS DRAWING IS A CONTROLLED DOCUMENT.		DATE: 7/27/02	Tyco Electronics Corporation Harrisburg, PA 17105-3608	
DRAWN: T.J.		DATE: 7/27/02	NAME: SMB SNAP-ON BULKHEAD JACK RECEPTACLE SOLDER POT TERMINAL	
CHECKED: J.J.		DATE: 7/28/02	SIZE: A2	
DIMENSIONS: INCHES		PRODUCT SPEC:	APPLICATION SPEC:	RESTRICTED TO:
MATERIAL: -		WEIGHT: -	SIZE: A2	00779
FINISH: -		CAGE CODE: -	SCALE: 8:1	SHEET: 1 of 1
		CUSTOMER DRAWING	REV: B	

AMP 1471-9 REV 31MM0200

1060442