

4

3

2

1

THIS DRAWING IS UNPUBLISHED. RELEASED FOR PUBLICATION JULY .2006.
 © COPYRIGHT 2006 BY TYCO ELECTRONICS CORPORATION. ALL RIGHTS RESERVED.

LOC	DIST	REVISIONS			
P	LTR	DESCRIPTION	DATE	OWN	APVD
E	B	C	ECR-07-018090	01/08/07	AM FWK

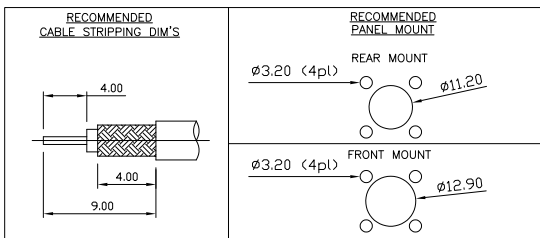
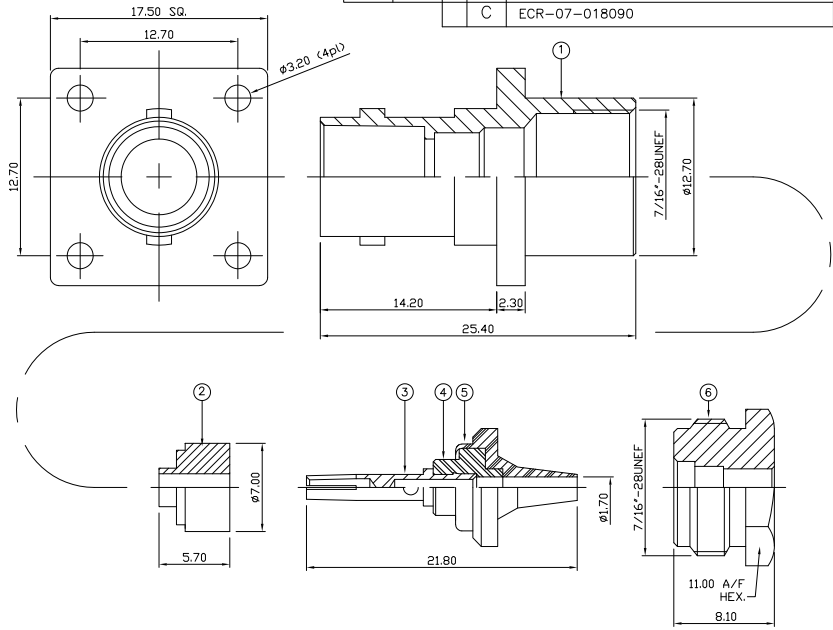
NOTES:

- ⚠ SINGLE PACK IN ACCORDANCE WITH AMP SPEC 107-3275
- ⚠ 100 TRAY PACK IN ACCORDANCE WITH AMP SPEC 107-3275
- ⚠ Ag PLATING
- 4 ELECTRICAL CHARACTERISTICS

FREQUENCY RANGE:	DC - 2 GHz
NOMINAL IMPEDANCE:	75 Ohm
INSULATION RESISTANCE:	5000 MOhm
WORKING VOLTAGE:	500 Volts RMS at Sea Level
DIELECTRIC WITHSTAND VOLTAGE:	1500 Volts RMS Max
CONTACT RESISTANCE:	
CENTRE CONTACT:	1.50 mOhm Max
OUTER CONTACT:	0.20 mOhm Max
VSWR @ 2GHz:	1.20:1 Max
INSERTION LOSS dB @ x 2 GHz:	0.20 Max
- 5 MECHANICAL CHARACTERISTICS

COUPLING RETENTION FORCE:	N/A
CABLE RETENTION FORCE:	85N Min
CLAMP NUT RECOMMENDED TORQUE:	4N
DURABILITY:	500 Cycles Min
- 6 ENVIRONMENTAL CHARACTERISTICS

OPERATING TEMPERATURE:	-65 to +165 DegC
------------------------	------------------
- 7 FOR TECHNICAL DATA REFER TO YOUR LOCAL TYCO ELECTRONICS SALES OFFICE
- 8 ALL DIMENSIONS ARE NOMINAL FOR REFERENCE ONLY UNLESS OTHERWISE STATED



QTY	1	1	MATERIAL	DESCRIPTION	ITEM
			BRASS	CLAMP NUT	6
			BRASS	SLEEVE	5
			PTFE	INSULATION	4
			BRASS	CONTACT	3
			PTFE	INSULATION	2
			BRASS	BODY	1
	6--0	1--0	MATERIAL	DESCRIPTION	ITEM

THIS DRAWING IS A CONTROLLED DOCUMENT.

DIMENSIONS:	TOLERANCES UNLESS OTHERWISE SPECIFIED:	OWN	J.SANDWELL	04JUL06
mm		CHK	S.PARLOW	04JUL06
		APVD	F.WHEELER-KING	04JUL06
		PRODUCT SPEC		
		APPLICATION SPEC		
		WEIGHT	411-3269	
MATERIAL	FINISH	CUSTOMER DRAWING		
SEE TABLE	-			

Tyco Electronics		Tyco Electronics Corporation	
		Bideford EX39 4HE	
NAME			
BNC STRAIGHT PANEL WEDGE CLAMP JACK 75 OHM			
RG179B/U, 187A/U, URM111			
SIZE	CAGE CODE	DRAWING NO	RESTRICTED TO
A3	00779	C=1478132	-
SCALE		SHEET	REV
NTS		1 of 1	C