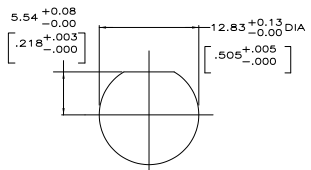
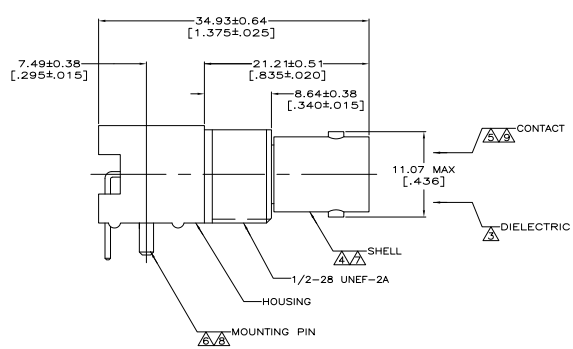
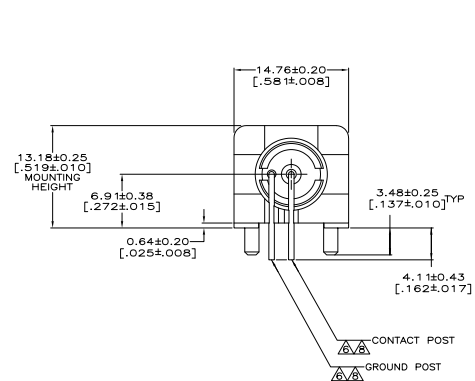
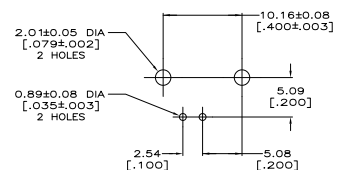


THIS DRAWING IS UNPUBLISHED. ALL RIGHTS RESERVED.  
 © 2008 BY TTI ELECTRONICS CORPORATION

REV	DATE	DESCRIPTION	BY	APP
AJ	16	J	J	J
		REV PER ECO 08-009474		7/21/2008 DW JL



RECOMMENDED PANEL CUTOUT



PCB CONFIGURATION

- ▲ POLYESTER PBT PER MIL-M-24519, TYPE GPT-15F, UL94V-O RATED, COLOR:NATURAL
  - ▲ POLYESTER PBT PER MIL-M-24519, TYPE GPT-15F, UL94V-O RATED, COLOR:BLACK
  - ▲ POLYMETHYLPENTENE, GENERAL PURPOSE.
  - ▲ ZINC PER QQ-Z-363.
  - ▲ BERYLLIUM COPPER PER QQ-C-530.
  - ▲ BRASS PER ASTM-B-453.
  - ▲ NICKEL PLATE PER QQ-N-290  
3.81 μm [.000150] MINIMUM THICK.
  - ▲ TIN PLATE PER ASTM-B-545  
3.81 μm [.000150] MINIMUM THICK.
  - ▲ GOLD PLATE PER MIL-G-45204  
0.76 μm [.000030] MINIMUM THICK.
10. SEE INSTRUCTION SHEET 2769.

THIS DRAWING IS A CONTROLLED DOCUMENT.		REV	DATE	DESCRIPTION	BY	APP
1	11-28-08	SCOTT	11-28-08	ISSUE	SCOTT	SCOTT
2	07-21-07	LIPPERT	07-21-07	ISSUE	LIPPERT	LIPPERT
3	01-11-07	GAFFNEY	01-11-07	ISSUE	GAFFNEY	GAFFNEY
4	01-11-07	WELLS	01-11-07	ISSUE	WELLS	WELLS
5	01-11-07	WELLS	01-11-07	ISSUE	WELLS	WELLS
6	01-11-07	WELLS	01-11-07	ISSUE	WELLS	WELLS
7	01-11-07	WELLS	01-11-07	ISSUE	WELLS	WELLS
8	01-11-07	WELLS	01-11-07	ISSUE	WELLS	WELLS
9	01-11-07	WELLS	01-11-07	ISSUE	WELLS	WELLS
10	01-11-07	WELLS	01-11-07	ISSUE	WELLS	WELLS

HOUSING MATERIAL	413194-2
PART NO	413194-1

THIS DRAWING IS A CONTROLLED DOCUMENT.	REV	DATE	DESCRIPTION	BY	APP
1	11-28-08	SCOTT	11-28-08	ISSUE	SCOTT
2	07-21-07	LIPPERT	07-21-07	ISSUE	LIPPERT
3	01-11-07	GAFFNEY	01-11-07	ISSUE	GAFFNEY
4	01-11-07	WELLS	01-11-07	ISSUE	WELLS
5	01-11-07	WELLS	01-11-07	ISSUE	WELLS
6	01-11-07	WELLS	01-11-07	ISSUE	WELLS
7	01-11-07	WELLS	01-11-07	ISSUE	WELLS
8	01-11-07	WELLS	01-11-07	ISSUE	WELLS
9	01-11-07	WELLS	01-11-07	ISSUE	WELLS
10	01-11-07	WELLS	01-11-07	ISSUE	WELLS