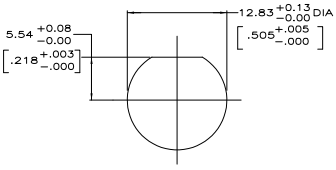
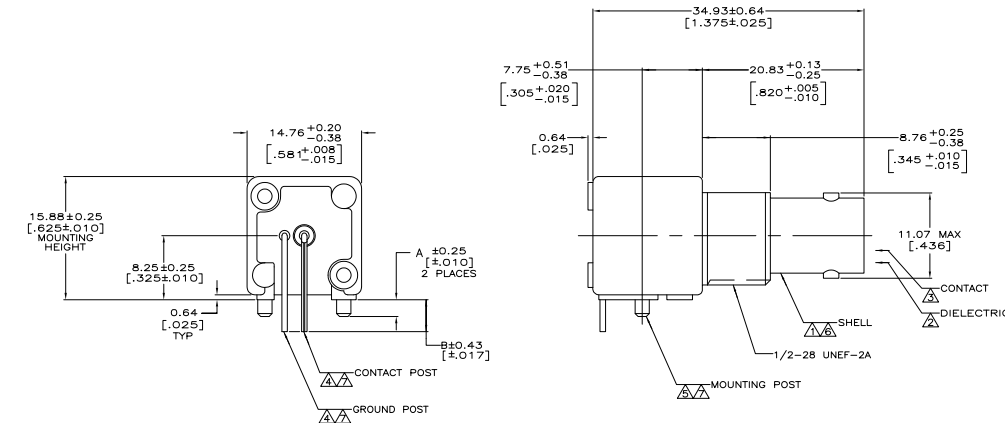


THIS DRAWING IS UNAPPROVED FOR PRODUCTION
 © GEORGE B. TOOT ELECTRONICS CORPORATION ALL RIGHTS RESERVED

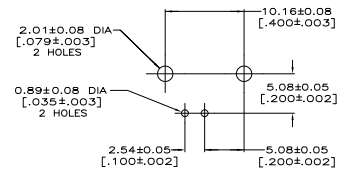
REV	DATE	DESCRIPTION	BY	CHK	APP
AJ	16				
			K		

- △ ZINC PER QQ-Z-363.
- △ POLYMETHYLPENTENE, GENERAL PURPOSE.
- △ BERYLLIUM COPPER PER QQ-C-530.
- △ BRASS PER ASTM-B-453.
- △ BRASS PER ASTM-B-16.
- △ NICKEL PLATE PER QQ-N-290,
3.81 μm [.000150] MINIMUM THICK.
- △ TIN PLATE PER ASTM-B-545,
3.81 μm [.000150] MINIMUM THICK.
- △ GOLD PLATE PER MIL-G-45204,
0.76 μm [.000030] MINIMUM THICK.
- △ SILVER PLATE PER QQ-S-365,
2.54 μm [.000100] MINIMUM THICK.
- △ GOLD PLATE PER MIL-G-45204,
1.27 μm [.000050] MINIMUM THICK.

11. SEE INSTRUCTION SHEET 2769.



RECOMMENDED PANEL CUTOUT



PCB CONFIGURATION

OBsolete	4.11	.162	2.16	.085		△		222092-5
OBsolete	2.92	.115	2.16	.085		△		222092-4
	4.11	.162	3.48	.137		△		222092-3
OBsolete	4.11	.162	2.16	.085		△		222092-2
	4.11	.162	2.16	.085		△		222092-1

B	A	CONTACT FINISH	PART NUMBER
THIS DRAWING IS A CONTROLLED DOCUMENT			
DESIGNED BY	CHECKED BY	DATE	REVISION
DRAWN BY	APPROVED BY	DATE	REVISION
CUSTOMER DRAWING		DATE	REVISION

SEE NOTES 1-5
 SEE NOTES 6-10