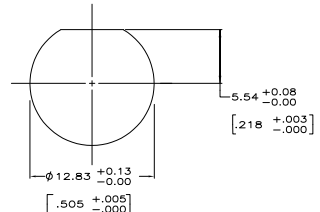
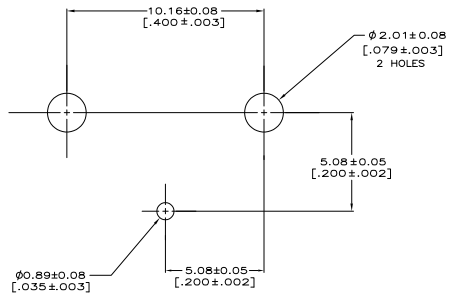


- △ POLYESTER,PBT,BLACK,PER MIL-M-24519
- △ POLYESTER,PBT,NATURAL,PER MIL-M-24519
- △ ZINC PER QQ-Z-363
- △ PHOSPHOR BRONZE PER QQ-B-750
- △ TIN PLATE PER ASTM-B-545
- △ GOLD PL PER MIL-G-45204
- △ RESISTOR CHARACTERISTICS:
 - A. OHMS (SEE TABLE)
 - B. 5% TOLERANCE
 - C. 400mw POWER RATING
- △ SELECTIVELY GOLD PLATED ON INTERFACE AREA PER: MIL-G-45204, .000030 THK,TIN PLATE ON SOLDER TAIL PER: ASTM-B-545, ALL OVER NICKEL PL PER: QQ-N-290
- 9. BOARD THICKNESS: .062 MAX



| | | | |
|-----------------------|-------------|----------|-------------|
| 2.67±0.38 [.105±.015] | 2.79 [.110] | 75 OHMS | 5414367-2 |
| C | B | RESISTOR | PART NUMBER |

| | | | | | | | |
|---------------------------------------|---|-----|------|-------------|----|-----|-----|
| THIS DRAWING IS A CONTROLLED DOCUMENT | | REV | DATE | DESCRIPTION | BY | CHK | APP |
| 1 | A | | | | | | |
| DRAWING LABELS | | REV | DATE | DESCRIPTION | BY | CHK | APP |
| 1 | A | | | | | | |
| MATERIALS | | REV | DATE | DESCRIPTION | BY | CHK | APP |
| 1 | A | | | | | | |
| FINISHES | | REV | DATE | DESCRIPTION | BY | CHK | APP |
| 1 | A | | | | | | |
| CUSTOMER DRAWING | | REV | DATE | DESCRIPTION | BY | CHK | APP |
| 1 | A | | | | | | |