

4

3

2

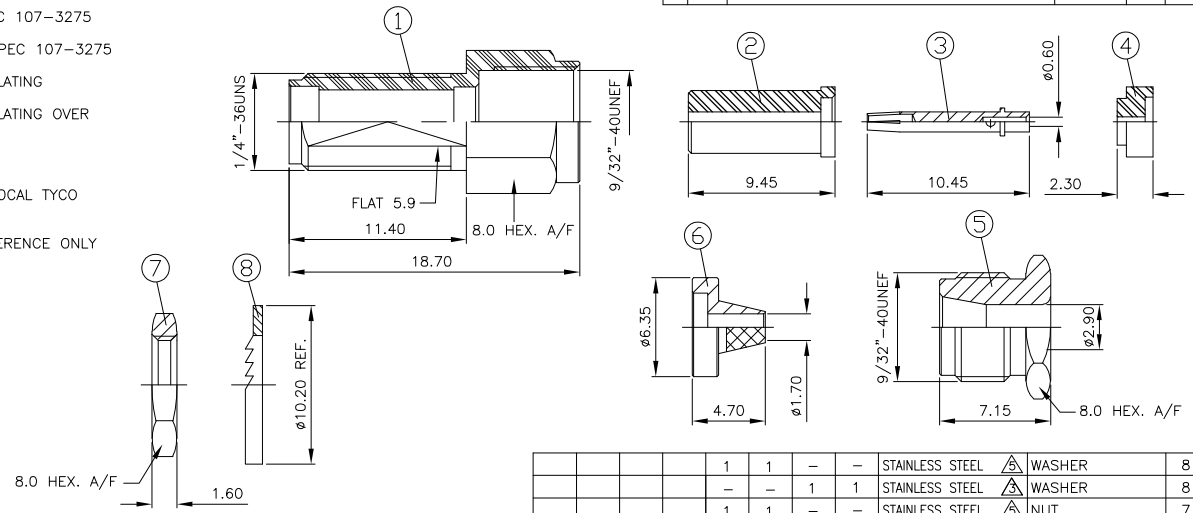
1

THIS DRAWING IS UNPUBLISHED. RELEASED FOR PUBLICATION APRIL, 2004.
 © COPYRIGHT 2004 BY TYCO ELECTRONICS CORPORATION. ALL RIGHTS RESERVED.

| LOC | DIST | REVISIONS | | | |
|-----|------|--------------|---------|-----|------|
| P | LTR | DESCRIPTION | DATE | DWN | APVD |
| B | | EBD0-0189-04 | 22APR04 | RS | FWK |

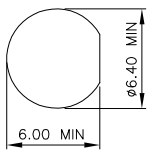
NOTES:

- 1 SINGLE PACK IN ACCORDANCE WITH SPEC 107-3275
- 2 100 TRAY PACK IN ACCORDANCE WITH SPEC 107-3275
- 3 0.08µm Au PLATING OVER 1.27µm Ni PLATING
- 4 0.76µm Au PLATING OVER 1.27µm Ni PLATING OVER 0.76µm Cu PLATING
- 5 PASSIVATED
- 6 FOR TECHNICAL DATA REFER TO YOUR LOCAL TYCO ELECTRONICS SALES OFFICE
- 7 ALL DIMENSIONS ARE NOMINAL FOR REFERENCE ONLY UNLESS OTHERWISE STATED

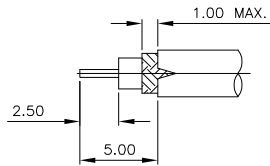


| QTY | 1 | 2 | 3 | 4 | 5 | 6 | 7 | 8 | MATERIAL | DESCRIPTION | ITEM |
|-----|---|---|---|---|---|---|---|---|------------------|---------------|------|
| | 1 | 1 | - | - | | | | | STAINLESS STEEL | WASHER | 8 |
| | - | - | 1 | 1 | | | | | STAINLESS STEEL | WASHER | 8 |
| | 1 | 1 | - | - | | | | | STAINLESS STEEL | NUT | 7 |
| | - | - | 1 | 1 | | | | | STAINLESS STEEL | NUT | 7 |
| | 1 | 1 | - | - | | | | | STAINLESS STEEL | CLAMP | 6 |
| | - | - | 1 | 1 | | | | | STAINLESS STEEL | CLAMP | 6 |
| | 1 | 1 | - | - | | | | | STAINLESS STEEL | BODY | 5 |
| | - | - | 1 | 1 | | | | | STAINLESS STEEL | BODY | 5 |
| | 1 | 1 | 1 | 1 | | | | | PTFE | INSULATOR | 4 |
| | 1 | 1 | 1 | 1 | | | | | BERYLLIUM COPPER | CENTER SOCKET | 3 |
| | 1 | 1 | 1 | 1 | | | | | PTFE | INSULATOR | 2 |
| | 1 | 1 | - | - | | | | | STAINLESS STEEL | SHELL | 1 |
| | - | - | 1 | 1 | | | | | STAINLESS STEEL | SHELL | 1 |
| | 2 | - | 1 | - | 1 | - | 1 | - | MATERIAL | DESCRIPTION | ITEM |

RECOMMENDED MOUNTING HOLE DIM'S



RECOMMENDED CABLE STRIPPING DIM'S



THIS DRAWING IS A CONTROLLED DOCUMENT.

| | |
|---|--|
| DWN R. SMITH 06FEB04 | Tyco Electronics Corporation Bideford, UK, EX39 4HE |
| CHK S. PARLOW 06FEB04 | |
| APVD E. WHEELER-KING 06FEB04 | NAME SMA STRAIGHT BULKHEAD, JACK SOLDER PIN, CLAMP ATTACHMENT |
| PRODUCT SPEC 108-3460 | RESTRICTED TO |
| APPLICATION SPEC 411-3276 | SIZE CAGE CODE DRAWING NO A3 00779 C-1478939 |
| MATERIAL SEE TABLE | WEIGHT - |
| TOLERANCES UNLESS OTHERWISE SPECIFIED: 0 PLC ± - 1 PLC ± - 2 PLC ± - 3 PLC ± - 4 PLC ± - ANGLES ± - | CUSTOMER DRAWING |

SCALE 1:1 SHEET 1 OF 1 REV B