

4

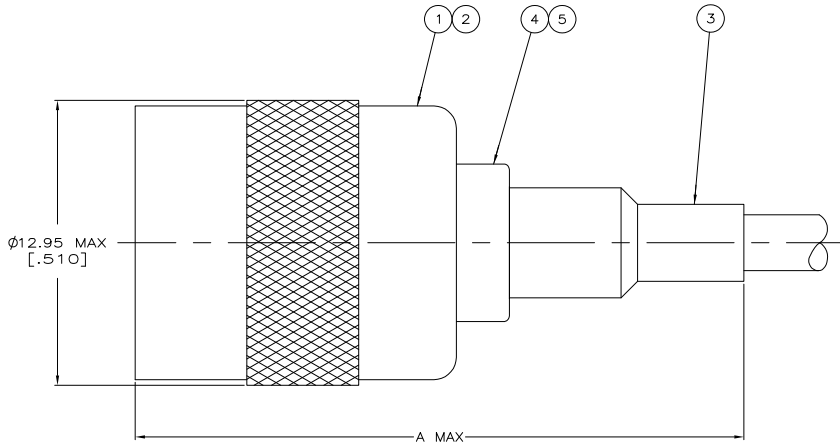
3

2

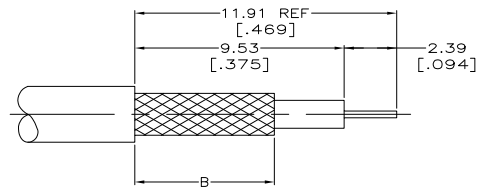
1

THIS DRAWING IS UNPUBLISHED. RELEASED FOR PUBLICATION  
 © COPYRIGHT BY TYCO ELECTRONICS CORPORATION. ALL RIGHTS RESERVED.

| LOC | DIST | REVISIONS |    |                           |           |        |
|-----|------|-----------|----|---------------------------|-----------|--------|
|     |      | F         | LR | DATE                      | BY        | APP'D  |
| AJ  | 16   | O         |    | RELEASED PER 0514-0496-04 | 26JAN2005 | JGH JL |



△ USE CRIMP TOOL 220190-1  
 2. USE INSTRUCTION SHEET 9540



RECOMMENDED STRIP LENGTH

|                                   |             |               |          |          |                       |            |              |          |               |   |               |   |                     |             |
|-----------------------------------|-------------|---------------|----------|----------|-----------------------|------------|--------------|----------|---------------|---|---------------|---|---------------------|-------------|
| BELDEN 89248                      | 6.35 [.250] | 34.80 [1.370] | 58086-1  | -        | -                     | 9-50427-0  | 221182-8     | 221505-4 | 5221506-6     |   |               |   |                     |             |
| AT&T 735A                         | 6.35 [.250] | 29.46 [1.160] | 58174-1  | -        | -                     | 9-328666-2 | 221182-6     | 221505-3 | 5221506-5     |   |               |   |                     |             |
| RG-179/U, 179A, 179B, 187/U, 187A | 6.35 [.250] | 29.46 [1.160] | 58304-1  | 227194-2 | 222001-2              | 9-328666-0 | 1-221182-2   | 221505-3 | 5221506-3     |   |               |   |                     |             |
| BELDEN 9231, 8281                 | 9.53 [.375] | 34.29 [1.350] | 220189-7 | -        | -                     | 9-50427-2  | 1-221182-0   | 221505-2 | 5221506-2     |   |               |   |                     |             |
| FOR USE WITH CABLE                | B           | A             | DIE SET  | 5        | TUBING, PLASTIC QTY=1 | 4          | TUBING QTY=1 | 3        | FERRULE QTY=1 | 2 | CONTACT QTY=1 | 1 | PLUG ASSEMBLY QTY=1 | PART NUMBER |

THIS DRAWING IS A CONTROLLED DOCUMENT.

|  |   |   |
|--|---|---|
| DIMENSIONS:<br>MM [INCHES]<br>0 P.L.C. # -<br>1 P.L.C. # -<br>2 P.L.C. # Q41 [014]<br>3 P.L.C. # -<br>4 P.L.C. # -<br>ANGLES # -<br>FINISH # - | TO: HAVENER<br>FROM: J. HAVENER<br>DATE: 26JAN2005<br>NAME: J. LIPPERT<br>PRODUCT SPEC:<br>APPLICATION SPEC:<br>WEIGHT:<br>CUSTOMER DRAWING | <b>tyco</b><br><b>Electronics</b><br>Tyco Electronics Corporation<br>Harrisburg, PA 17105-3608<br>PLUG<br>75 OHM, COMMERCIAL<br>TNC<br>SIZE: A2<br>CASE CODE: 00779<br>DRAWING NO: C=5221506<br>SCALE: 8:1<br>SHEET: 1 OF 1<br>REV: Q |
|--|---|---|

AMP 1471-9 REV 31MM2000

5221506

A