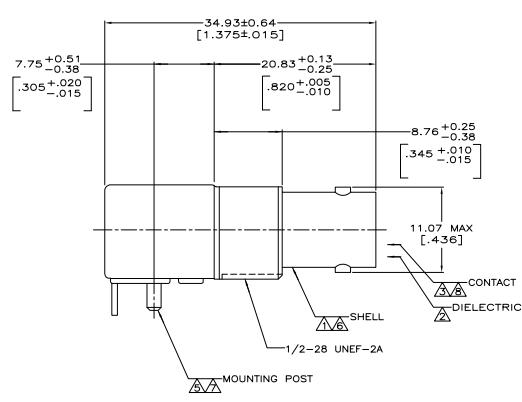
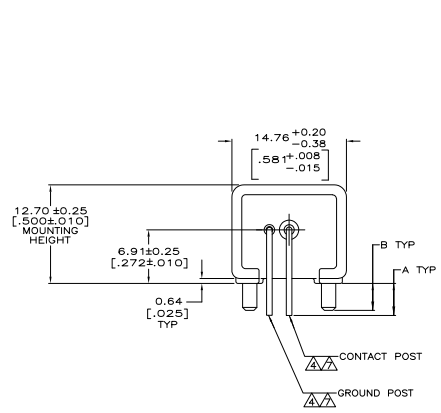
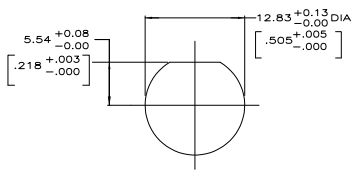


THIS DRAWING IS UNAPPROVED FOR REVISION
 © 1988 BY TYS ELECTRONICS CORPORATION. ALL RIGHTS RESERVED.

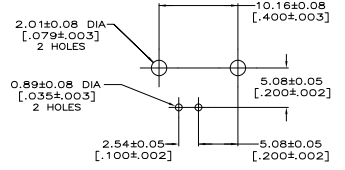
REV	DATE	DESCRIPTION	BY	CHK	APP
16					
C1		REVISED PER ECO-06-018704			



- △ ZINC PER QQ-Z-363.
 - △ POLYMETHYLPENTENE, GENERAL PURPOSE.
 - △ BERYLLIUM COPPER PER QQ-C-530.
 - △ BRASS PER ASTM-B-453.
 - △ BRASS PER ASTM-B-16.
 - △ NICKEL PLATE PER QQ-N-290, 3.81 μm [0.000150] MINIMUM THICK.
 - △ TIN PLATE PER ASTM-B-545, 3.81 μm [0.000150] MINIMUM THICK.
 - △ GOLD PLATE PER MIL-G-45204, 0.76 μm [0.000030] MINIMUM THICK.
9. SEE INSTRUCTION SHEET 2769.



RECOMMENDED PANEL CUTOUT



PCB CONFIGURATION

2.03 ±0.13	[0.80 ±0.005]	2.29 ±0.13	[0.90 ±0.005]	414907-3
2.03 ±0.13	[0.80 ±0.005]	2.79 ±0.25	[1.10 ±0.010]	414907-2
3.48 ±0.25	[1.37 ±0.010]	4.11 ±0.43	[1.62 ±0.017]	414907-1

B		A		PART NUMBER
THIS DRAWING IS A CONTROLLED DOCUMENT.	BY: LEPPER, 7-7-84	DATE: 7-7-84	REV: 1	414907-3
DESIGNED BY: LEPPER, 7-7-84	DATE: 7-7-84	REV: 1		
CHECKED BY: LEPPER, 7-7-84	DATE: 7-7-84	REV: 1		
APPROVED BY: LEPPER, 7-7-84	DATE: 7-7-84	REV: 1		
SEE NOTES 1 - 5	SEE NOTES 6 - 8	SIZE: A1	DATE: 00779	REV: 414907
CUSTOMER DRAWING				REV: 1