

4

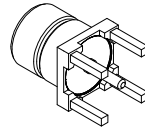
3

2

1

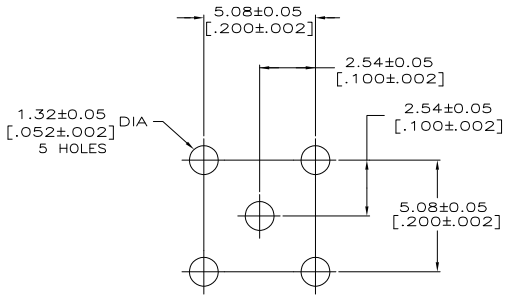
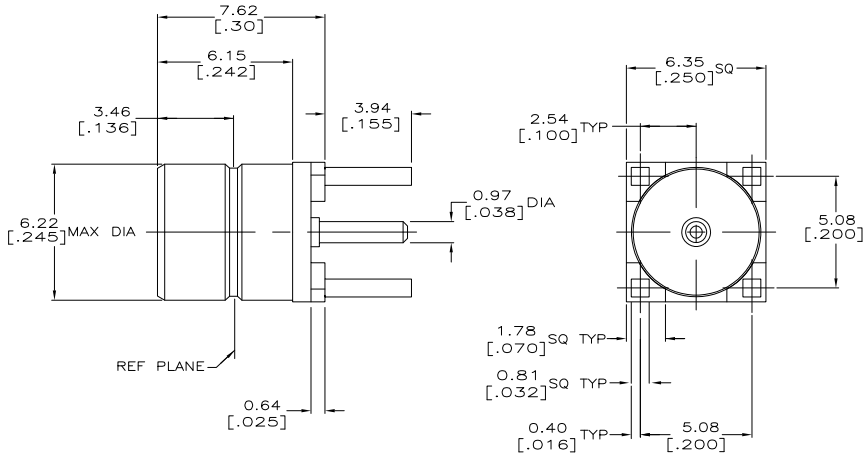
THIS DRAWING IS UNPUBLISHED. RELEASED FOR PUBLICATION
 © COPYRIGHT BY TYCO ELECTRONICS CORPORATION. ALL RIGHTS RESERVED.

LOC	DIST	REVISIONS				
		P	LR	DATE	MIN	APD
AJ	16	0		REV PER EC-DS14-0496-04	31JAN2005	GA JGH



ISOMETRIC VIEW

- 1 BRASS PER ASTM-B-453
- 2 TEFLON PER ASTM-D-1710
- 3 GOLD PLATE PER MIL-G-45204 OVER NICKEL PLATE PER QQ-N-290.
- 4 TIN PLATE PER ASTM B 545.



RECOMMENDED PCB CONFIGURATION

—	△	△	△	5414244-4
DIELECTRIC	CONTACT	FINISH	BODY	ASSY NO

THIS DRAWING IS A CONTROLLED DOCUMENT.		DR: G. ATTADIA 31JAN2005	CHK: J. HAVENER 31JAN2005	TYCO Electronics Corporation
DIMENSIONS: INCHES		APR: J. HAVENER 31JAN2005	NAME: J. HAVENER	Harrisburg, PA 17105-3608
OTHER DIMENSIONS: MILLIMETERS		APPLICATION SPEC: —	PRODUCT SPEC: —	JACK,RCPT,STR,SMB/PCB
MATERIAL: SEE TABLE	FINISH: SEE TABLE	WEIGHT: —	SIZE: A2	CHG CODE: 00779
CUSTOMER DRAWING		DRAWING NO: C=5414244		RESTRICTED TO: —
		SCALE: 8:1	SHEET: 1 of 1	REV: 0

AMP 1471-9 REV 31JAN2005

5414244

A