

4

3

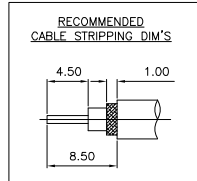
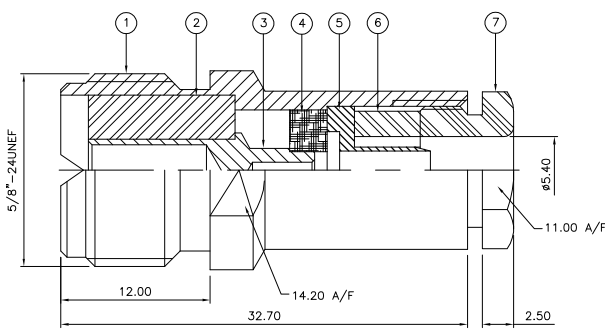
2

1

THIS DRAWING IS UNPUBLISHED. RELEASED FOR PUBLICATION MAY, 2006.  
 © COPYRIGHT 2006 BY TYCO ELECTRONICS CORPORATION. ALL RIGHTS RESERVED.

LOC		DIST		REVISIONS			
P	LTR	DESCRIPTION		DATE	DWN	APVD	
	C	ECR-06-012506		31MAY06	JMS	FWK	

- NOTES:**
- ⚠ PACK IN ACCORDANCE WITH AMP SPEC 107-3275
  - ⚠ 100 TRAY PACK IN ACCORDANCE WITH AMP SPEC 107-3275
  - ⚠ Au PLATING
  - ⚠ Ni PLATING
  - ⚠ THIS ITEM MUST BE WHITE
- 6 ELECTRICAL CHARACTERISTICS**
- |                               |                            |
|-------------------------------|----------------------------|
| FREQUENCY RANGE:              | DC - 500 MHz               |
| NOMINAL IMPEDANCE:            | Non Constant               |
| INSULATION RESISTANCE:        | 5000 MOhm                  |
| WORKING VOLTAGE:              | 500 Volts RMS at Sea Level |
| DIELECTRIC WITHSTAND VOLTAGE: | 1500 Volts RMS Max         |
| CONTACT RESISTANCE:           |                            |
| CENTRE CONTACT:               | 3.00 mOhm Max              |
| OUTER CONTACT:                | 2.00 mOhm Max              |
- 7 MECHANICAL CHARACTERISTICS**
- |                               |                |
|-------------------------------|----------------|
| COUPLING NUT RETENTION FORCE: | N/A            |
| CABLE RETENTION FORCE:        | 170N Min       |
| CLAMP NUT RECOMMENDED TORQUE: | 4N             |
| DURABILITY:                   | 500 Cycles Min |
- 8 ENVIRONMENTAL CHARACTERISTICS**
- |                        |                  |
|------------------------|------------------|
| OPERATING TEMPERATURE: | -65 to +165 DegC |
|------------------------|------------------|
- 9 FOR TECHNICAL DATA REFER TO YOUR LOCAL TYCO ELECTRONICS SALES OFFICE**
- 10 ALL DIMENSIONS ARE NOMINAL FOR REFERENCE ONLY UNLESS OTHERWISE STATED**



QTY	UNIT	MATERIAL	DESCRIPTION	ITEM
1	1	BRASS	CLAMP NUT	7
1	1	SILICONE RUBBER	GASKET	6
1	1	BRASS	SLEEVE	5
1	1	PTFE	INSULATION	4
1	1	BRASS	CONTACT	3
1	1	PTFE	INSULATION	2
1	1	BRASS	BODY	1
6--0	1--0	MATERIAL	DESCRIPTION	ITEM

THIS DRAWING IS A CONTROLLED DOCUMENT.

DIMENSIONS:	TOLERANCES UNLESS OTHERWISE SPECIFIED:	DWN	31MAY06	Tyco Electronics Corporation	
mm		J. SANDWELL		Bideford EX39 4HE	
		CHK	31MAY06	NAME	
		S. PARLOW		UHF STRAIGHT JACK SOLDER	
		F. WHEELER-KING		RG58C/U, 141A/U, URM43, 76, KX15	
		APVD	31MAY06	SIZE	CAGE CODE
		PRODUCT SPEC		A3	00779
		APPLICATION SPEC		DRAWING NO	1337652
		411-3257		RESTRICTED TO	
MATERIAL	FINISH	WEIGHT		CUSTOMER DRAWING	
SEE TABLE				SCALE	NTS
				SHEET	1 OF 1
				REV	C