

4

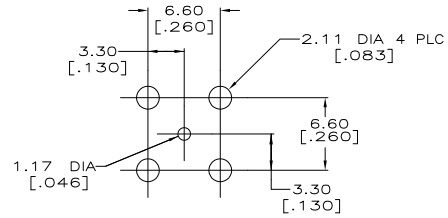
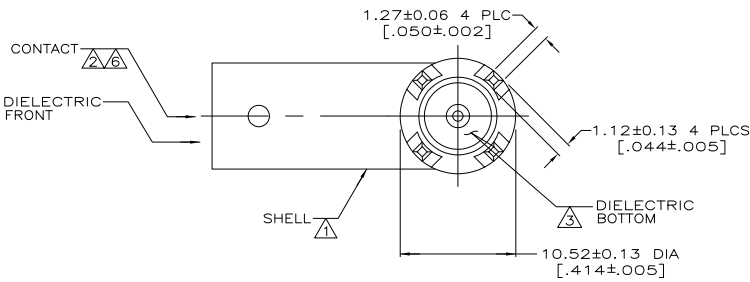
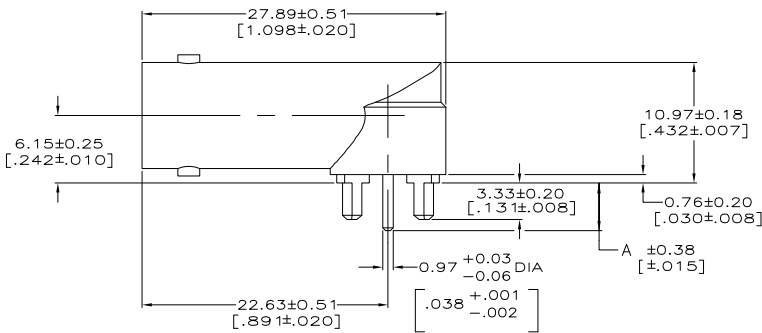
3

2

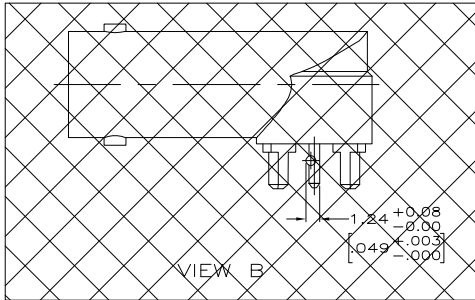
1

THIS DRAWING IS UNPUBLISHED. RELEASED FOR PUBLICATION
 © COPYRIGHT BY TYCO ELECTRONICS CORPORATION. ALL RIGHTS RESERVED.

LOC	DIST	REVISIONS			
P	LTR	DESCRIPTION	DATE	BY	APPD
AJ	00				
R		REVISED PER EDD 06-024121	1/29/2007	DW	JL



PCB CONFIGURATION



- ▲ ZINC PER QQ-Z-363.
- ▲ BERYLLIUM COPPER PER QQ-C-530.
- ▲ PTFE PER MIL-P-19468.
- ▲ NICKEL PLATE PER QQ-N-290, 3.81µm [.000150] MINIMUM THICK.
- ▲ TIN-LEAD PLATE PER ASTM-B-545, 3.04µm [.000120] MINIMUM THICK OVER NICKEL PLATE PER MIL-C-26074, 7.62µm [.000300] MINIMUM THICK.
- ▲ GOLD PLATE PER MIL-G-45204, 1.27µm [.000050] MINIMUM THICK.
- 7. INTERFACE PER MIL-C-39012.
- ▲ POLYMETHYLPENTENE, GENERAL PURPOSE

OBSOLETE	3.33	.131			B	413631-5
OBSOLETE	3.33	.131			B	413631-4
OBSOLETE	3.33	.131			-	413631-3
	4.34	.171			-	413631-2
	4.34	.171			-	413631-1

A	FINISH:	MATERIAL:	VIEW	PART NUMBER
	SHELL	DIELECTRIC, FRONT		

THIS DRAWING IS A CONTROLLED DOCUMENT.		DATE	7-1-91
DRAWN BY: J. LIPPERT		DATE	8-5-91
CHECKED BY: A. GABANY		DATE	8-5-91
APPROVED BY: A. GABANY		DATE	8-5-91
PRODUCT SPEC: 108-12078		SIZE	A2
APPLICATION SPEC: -		CAGE CODE	00779
MATERIAL: -		DRAWING NO.	C=413631
FINISH: -		RESTRICTED TO	-
SEE NOTES 1-3		CUSTOMER DRAWING	SCALE: 4:1 SHEET 1 of 1 REV R