

4

3

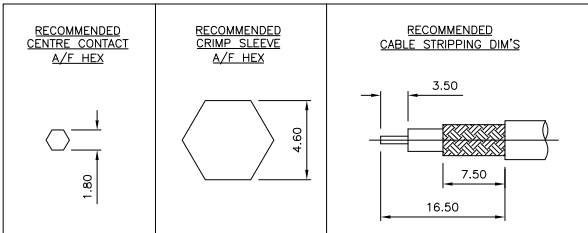
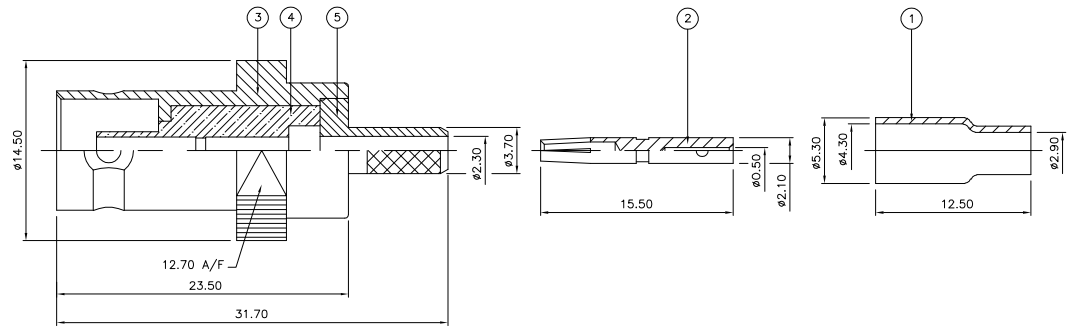
2

1

THIS DRAWING IS UNPUBLISHED. RELEASED FOR PUBLICATION JAN. 2006.
 © COPYRIGHT 2006 BY TYCO ELECTRONICS CORPORATION. ALL RIGHTS RESERVED.

| LOC | DIST | REVISIONS | | | |
|-----|------|---------------|---------|-----|------|
| P | LTR | DESCRIPTION | DATE | DWN | APVD |
| C | | ECR-06-001518 | 26JAN06 | JMS | FWK |

- NOTES:**
- 1. PACK IN ACCORDANCE WITH AMP SPEC 107-3275
 - 2. 100 TRAY PACK IN ACCORDANCE WITH AMP SPEC 107-3275
 - 3. Au PLATING
 - 4. Ni PLATING
 - 5. HAND TOOL : 9-1478240-0
 - 6. DIE SET : 9-1478245-0
 - 7. **ELECTRICAL CHARACTERISTICS**
 FREQUENCY RANGE: DC - 2 GHz
 NOMINAL IMPEDANCE: 75 Ohm
 INSULATION RESISTANCE: 5000 MOhm
 WORKING VOLTAGE: 500 Volts RMS at Sea Level
 DIELECTRIC WITHSTAND VOLTAGE: 1500 Volts RMS Max
 CONTACT RESISTANCE:
 CENTRE CONTACT: 1.50 mOhm Max
 OUTER CONTACT: 0.20 mOhm Max
 VSWR @ 2GHz: 1.20:1 Max
 INSERTION LOSS dB @ x 2 GHz: 0.20 Max
 - 8. COUPLING RETENTION FORCE: N/A
 CABLE RETENTION FORCE: 85N Min
 DURABILITY: 500 Cycles Min
 - 9. **ENVIRONMENTAL CHARACTERISTICS**
 OPERATING TEMPERATURE: -65 to +165 DegC



| QTY | DESCRIPTION | MATERIAL | DESCRIPTION | ITEM |
|------|-------------|----------|-------------|------|
| 1 | 1 | BRASS | CHASSIS | 5 |
| 1 | 1 | PTFE | INSULATION | 4 |
| 1 | 1 | BRASS | BODY | 3 |
| 1 | 1 | BRASS | CONTACT | 2 |
| 1 | 1 | BRASS | FERRULE | 1 |
| 6--0 | 1--0 | MATERIAL | DESCRIPTION | ITEM |

THIS DRAWING IS A CONTROLLED DOCUMENT.

| | | | | | | |
|-------------|--|--|---|-----------|------------|--------------------|
| DWN | J. SANDWELL | 26JAN06 | Tyco Electronics Corporation Bideford EX39 4HE | | | |
| CHK | S. PARLOW | 26JAN06 | | | | |
| APVD | F. WHEELER-KING | 26JAN06 | | | | |
| NAME | BNC STRAIGHT JACK CRIMP 75 OHM RG179B/U,187A/U,URM111 | | | | | |
| DIMENSIONS: | mm | TOLERANCES UNLESS OTHERWISE SPECIFIED: | SIZE | CAGE CODE | DRAWING NO | RESTRICTED TO |
| 0 PLC | ± | - | A3 | 00779 | 1337537 | - |
| 1 PLC | ± | - | WEIGHT | - | | - |
| 2 PLC | ± | - | CUSTOMER DRAWING | SCALE | NTS | SHEET 1 OF 1 REV C |
| 3 PLC | ± | - | | | | |
| 4 PLC | ± | - | | | | |
| ANGLES | ± | - | | | | |
| MATERIAL | FINISH | - | | | | |