

4

3

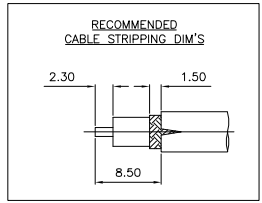
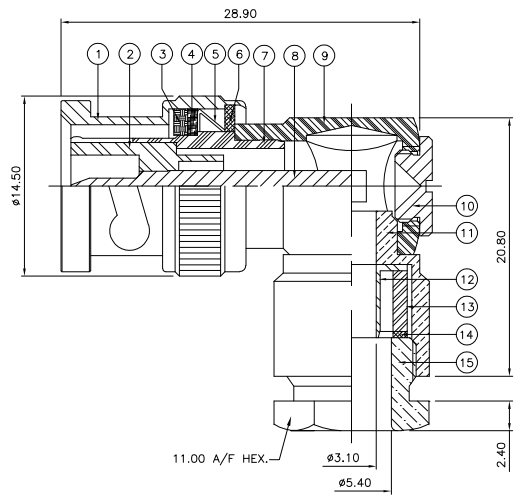
2

1

THIS DRAWING IS UNPUBLISHED. RELEASED FOR PUBLICATION JAN. 2006.  
 © COPYRIGHT 2006 BY TYCO ELECTRONICS CORPORATION. ALL RIGHTS RESERVED.

LOC	DIST	REVISIONS			
P	LTR	DESCRIPTION	DATE	DWN	APVD
C		ECR-06-001518	19JAN06	JMS	FWK

- NOTES:
- ⚠ PACK IN ACCORDANCE WITH AMP SPEC 107-3275
  - ⚠ 100 TRAY PACK IN ACCORDANCE WITH AMP SPEC 107-3275
  - ⚠ Ag PLATING
  - ⚠ THIS ITEM MUST BE WHITE
- 5 **ELECTRICAL CHARACTERISTICS**  
 FREQUENCY RANGE: DC - 4 GHz  
 NOMINAL IMPEDANCE: 50 Ohm  
 INSULATION RESISTANCE: 5000 MOhm  
 WORKING VOLTAGE: 500 Volts RMS at Sea Level  
 DIELECTRIC WITHSTAND VOLTAGE: 1500 Volts RMS Max  
 CONTACT RESISTANCE:  
 CENTRE CONTACT: 1.50 mOhm Max  
 OUTER CONTACT: 0.20 mOhm Max  
 VSWR @ 4GHz: 1.35:1 Max  
 INSERTION LOSS dB @ x 3 GHz: 0.30 Max
- 6 **MECHANICAL CHARACTERISTICS**  
 COUPLING RETENTION FORCE: 445N Min  
 CABLE RETENTION FORCE: 170N Min  
 CLAMP NUT RECOMMENDED TORQUE: 4N  
 DURABILITY: 500 Cycles Min
- 7 **ENVIRONMENTAL CHARACTERISTICS**  
 OPERATING TEMPERATURE: -65 to +165 DegC



QTY	UNIT	MATERIAL	DESCRIPTION	ITEM
1	1	BRASS	CLAMP NUT	15
1	1	BRASS	WASHER	14
1	1	SILICONE RUBBER	GASKET	13
1	1	BRASS	FERRULE	12
1	1	BRASS	BODY I	11
1	1	BRASS	CAP	10
1	1	BRASS	BODY II	9
1	1	BRASS	CONTACT	8
1	1	BRASS	OUTER CONTACT	7
1	1	BRASS	WASHER	6
1	1	SPRING STEEL	SPRING	5
1	1	BRASS	RETAINING RING	4
1	1	SILICONE RUBBER	GASKET	3
1	1	PTFE	INSULATION	2
1	1	BRASS	SHELL	1
6--0	1--0	MATERIAL	DESCRIPTION	ITEM

THIS DRAWING IS A CONTROLLED DOCUMENT.

DIMENSIONS: mm	TOLERANCES UNLESS OTHERWISE SPECIFIED: 0 PLC ± .05 1 PLC ± .03 2 PLC ± .02 3 PLC ± .01 4 PLC ANGLES ± .01	DWN J. SANDWELL 19JAN06 CHK S. PARLOW 19JAN06 APVD F. WHEELER-KING 19JAN06 PRODUCT SPEC APPLICATION SPEC 411-3266 WEIGHT -	19JAN06 <b>Tyco Electronics</b> Tyco Electronics Corporation Bideford EX39 4HE
MATERIAL SEE TABLE	FINISH -	NAME BNC ELBOW PLUG PRESSURE SLEEVE 50 OHM RG58/U, 141A/U, URM43, 76, BELDEN 9907, KX15	SIZE A3 CAGE CODE 00779 DRAWING NO 1337503 RESTRICTED TO -
CUSTOMER DRAWING		SCALE NTS	SHEET 1 OF 1 REV C