

4

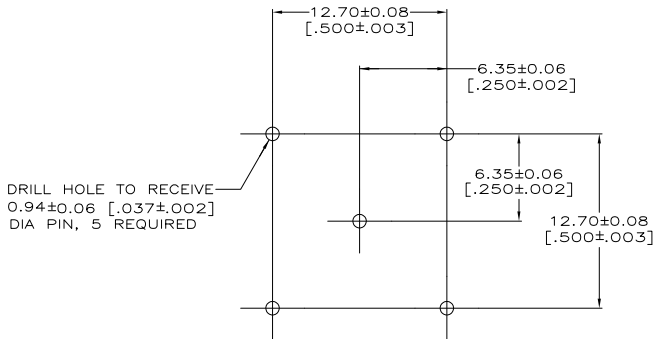
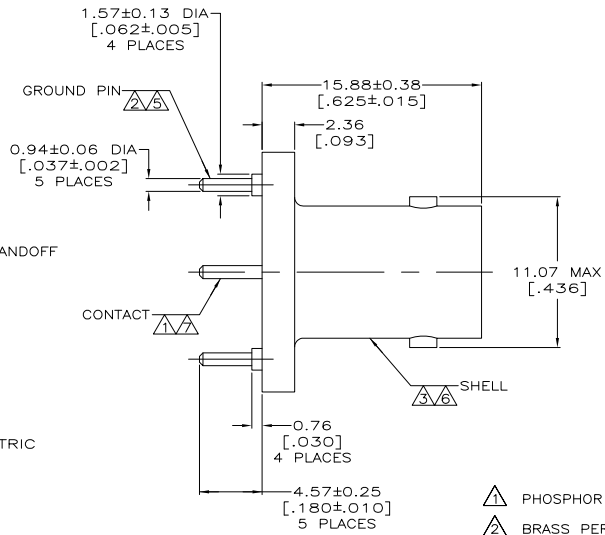
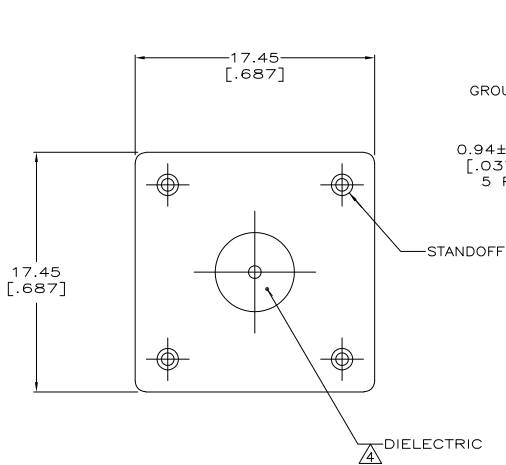
3

2

1

THIS DRAWING IS UNPUBLISHED. RELEASED FOR PUBLICATION.
 © COPYRIGHT BY TYCO ELECTRONICS CORPORATION. ALL RIGHTS RESERVED.

LOC		DIST		REVISIONS			
F	LNK	DESCRIPTION	DATE	BY	APP'D		
AJ	16	REVISED PER EC 0514-0150-05	05OCT2005	REH	JL		



SUGGESTED PCB CONFIGURATION

- ▲ PHOSPHOR BRONZE PER QQ-B-750.
 - ▲ BRASS PER ASTM-B-16.
 - ▲ ZINC PER QQ-Z-363.
 - ▲ POLYESTER, PBT, PER MIL-M-24519.
 - ▲ TIN PLATE PER ASTM-B-545
2.54 μm [0.000100] MINIMUM THICK.
 - ▲ NICKEL PLATE PER QQ-N-290
3.81 μm [0.000150] MINIMUM THICK.
 - ▲ GOLD PLATE PER ASTM-B-488,
0.76 μm [0.000030] MINIMUM THICK.
8. SEE INSTRUCTION SHEET 408-9889.

5414460-1
PART NO

THIS DRAWING IS A CONTROLLED DOCUMENT.		DRN J. ALCORTA 26APR2005		Tyco Electronics Corporation Harrisburg, PA 17105-3608	
DIMENSIONS: mm (INCHES)		CHK J. HAVENER 26APR2005		PART NO	
TOLERANCES UNLESS OTHERWISE SPECIFIED:		APPC J. LIPPERT 26APR2005	NAME		
0 PLC ±		PRODUCT SPEC	108-12078		
1 PLC ±		APPLICATION SPEC	SIZE CASE CODE DRAWING NO		
2 PLC ± 0.20 (0.008)		WEIGHT	A2 00779 C=5414460		
3 PLC ±		CUSTOMER DRAWING	RESTRICTED TO		
4 PLC ±		FINISH	SCALE 5:1 SHEET 1 of 1 REV A		
ANGLES					
SEE NOTES 1 - 4		SEE NOTES 5 - 7			

5414460

A